



**DECK-10**

Height 54"  
 Length 25.63"  
 Depth 22.75"  
 Cubic Ft. 10  
 Liters 283  
 Bottles (20 oz) 126  
 Cans (12oz) 252



**DECK-12**

Height 62"  
 Length 25.63"  
 Depth 22.75"  
 Cubic Ft. 12  
 Liters 339  
 Bottles (20 oz) 168  
 Cans (12oz) 336



**DECK-26**

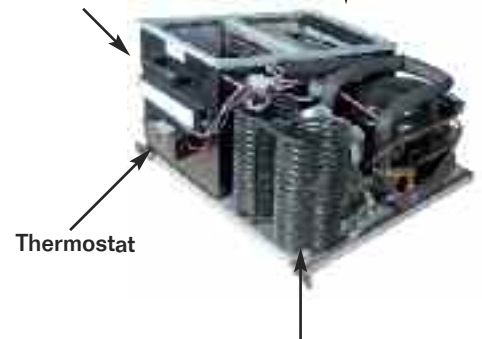
Height 78"  
 Length 30"  
 Depth 29.5"  
 Cubic Ft. 26  
 Liters 736  
 Bottles (20 oz) 355  
 Cans (12oz) 639

## Features

- Interior and exterior constructed of heavy duty white coated steel
- Polyurethane insulation with cyclopentane as blowing agent
- Double pane glass door with Low-E protection
- Illuminated top header sign (DECK-26)
- Externally mounted hinged glass doors
- Recessed door handle
- Heavy duty shelves with clips
- Heavy duty hinges with self closing mechanism
- Forced air evaporator for rapid temperature "Pull Down"
- Self contained heavy duty deck 134a condensing unit
- Energy efficient LED lighting
- UL Classified to ANSI/NSF 7

### ALL IN ONE DECK INTEGRATED REFRIGERATION SYSTEM

Sturdy front and back handles to ease deck removal and installation



Low maintenance condenser

Model No.	Description	Voltage	Amps	Temp	HP	Est. Ship Weight
DECK-10	1 Door/3 Shelves	115	3.3	32°F - 39°F	1/4	205#
DECK-12	1 Door/3 Shelves	115	4.5	32°F - 39°F	1/4	235#
DECK-26	1 Door/ 4 Shelves	115	6	32°F - 39°F	1/3	498#

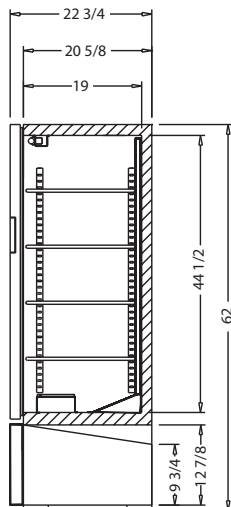
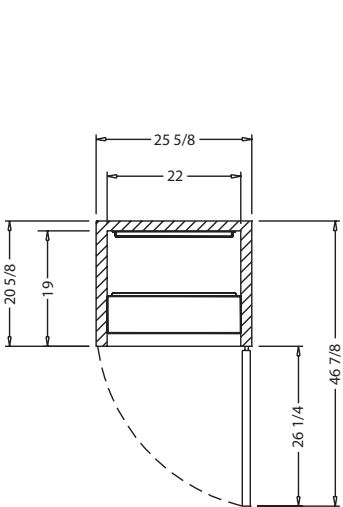
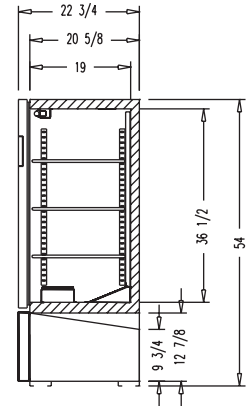
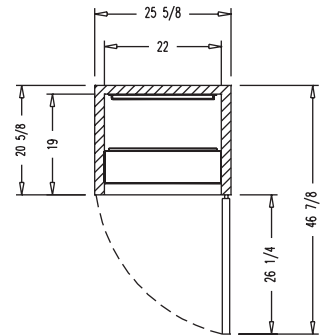
# Technical Data / Deck Series



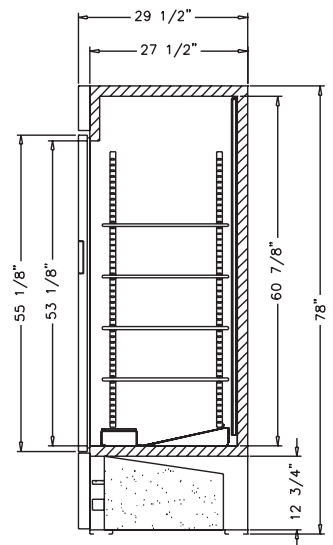
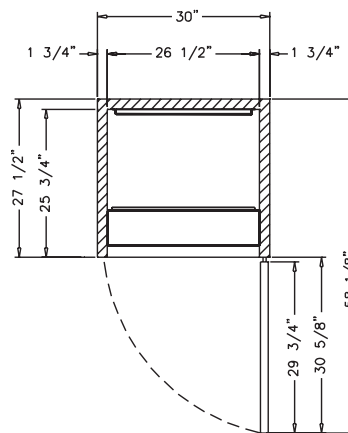
Model #	DECK-10	DECK-12	DECK-26
<b>Outside Dimensions</b>			
Depth	22.75"	22.75"	29.5"
Length	25.63"	25.63"	30"
Height	54"	62"	78"
Door Size	26"x38"	26"x46"	29.75"x55.12"
Door Type	1 swing	1 swing	1 swing
<b>Inside Dimensions</b>			
Depth	19"	19"	25.75"
Length	22"	22"	26.5"
Height	36.5"	44.5"	60.875"
Shelf Size	21.25"x17.56"	21.25"x17.56"	25.69"x24"
# of Shelves	3	3	4
Capacity: Cubic Foot	10	12	26
<b>Specifications</b>			
Operating Temperature	32°F-39°F	32°F-39°F	32°F-39°F
Refrigerant	134a	134a	134a
Compressor Size HP	1/4	1/4	1/3
Voltage	115	115	115
Amperage	3.3	4.5	6
Cord and Plug	yes	yes	yes
<b>Shipping Dimensions</b>			
Depth	27"	27"	27"
Length	30"	30"	30"
Height	60"	68"	84"
Gross Weight lbs.	205	235	498
Cubic feet	28	32	39

- Cases are designed to operate at 75°F and 55% relative humidity.
- Specification subject to change without notice.

**Deck-10**



**Deck-12**



**Deck-26**

