

Glass Door Counter Tops



CTE-3-US

33.75"	Height
19"	Length
19.125"	Depth
3	Cubic Ft.
85	Liters
40	Bottles (20 oz)
108	Cans (12oz)

CC-7-US

37.75"	Height
21.25"	Length
25"	Depth
7	Cubic Ft.
198	Liters
102	Bottles (20 oz)
217	Cans (12oz)



Features

- Interior and exterior constructed of heavy duty white coated steel
- Polyurethane insulation with cyclopentane as blowing agent
- Double pane glass door with Low-E protection
- Illuminated top header sign (CTE-3-US)
- Externally mounted hinged glass doors
- Recessed door handle
- Heavy duty shelves with clips
- Heavy duty hinges with self closing mechanism
- Forced air evaporator for rapid temperature "Pull Down"
- Self contained heavy duty 134a condensing unit
- Energy efficient LED lighting
- UL Classified to ANSI/NSF 7

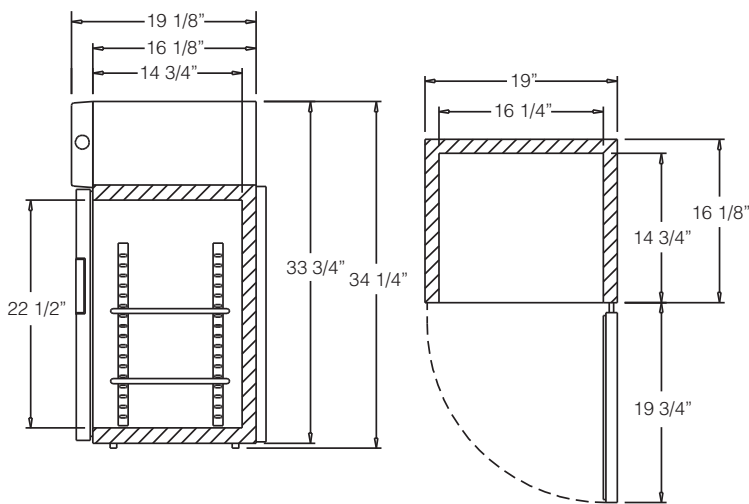
Model No.	Description	Voltage	Amps	Temp	HP	Est. Ship Weight
CTE-3-US	1 Door/2 Shelves	115	3.8	32°F - 39°F	1/8	90#
CC-7-US	1 Door/3 Shelves	115	3.2	32°F - 39°F	1/8	170#

Technical Data / Glass Door Counter Tops

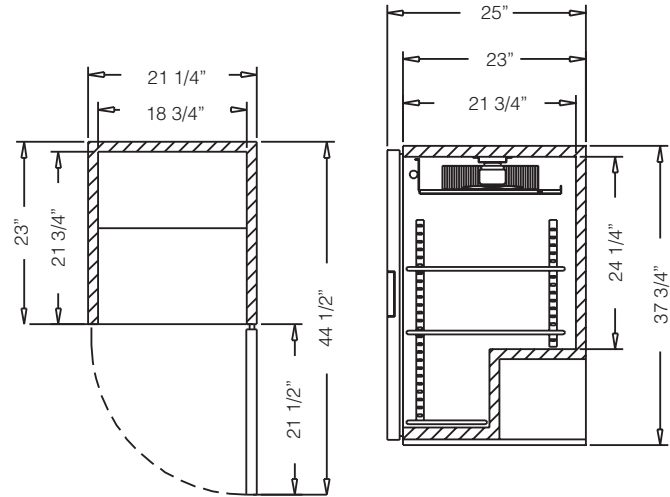


Model #	CTE-3-US	CC-7-US
Outside Dimensions		
Depth	19.125"	25"
Length	19"	21.25"
Height	33.75"	37.75"
Door Size	25" x 18.625"	36.625" x 21"
Door Type	1 swing	1 swing
Inside Dimensions		
Depth	14.75"	21.75"
Length	16.25"	18.75"
Height	22.5"	35"
Shelf Size	15.5"x13.25"	17.625"x9"
# of Shelves	2	3
Capacity: Cubic Foot	3	7
Specifications		
Operating Temperature	32°F-39°F	32°F-39°F
Refrigerant	134a	134a
Compressor Size HP	1/8	1/8
Voltage	115	115
Amperage	3.8	3.2
Cord and Plug	yes	yes
Shipping Dimensions		
Depth	24"	30"
Length	24"	30"
Height	40"	42"
Gross Weight lbs	90	170
Cubic feet	13	21

- Cases are designed to operate at 75°F and 55% relative humidity.
- Specification subject to change without notice.



CTE-3-US



CC-7-US

