

# Ice Merchandisers - Indoor



**ICB-1-GL**

Height 75.75"  
Length 55.5"  
Depth 36.25"



**ICB-2-GL**

Height 75.75"  
Length 76.25"  
Depth 36.25"



**ICB-2-L-G**  
*(formerly ICB-100-GL)*

Height 75.75"  
Length 96"  
Depth 36.25"

## Features

- Exterior cabinet made of white vinyl clad steel
- Custom front trim enhances cabinet appearance, sturdy, stainless steel top
- Hinged door with chrome plated hardware seals magnetically
- Reinforced 16 gauge galvanized steel base
- Foamed in place high density CFC free polyurethane foam insulation
- Heavy duty galvanized steel interior with air distribution channels
- High capacity blower cooled refrigeration system with automatic defrost
- Self contained heavy duty 134a condensing unit
- Graphics are visible on three sides for maximum merchandising effect
- Fully visible glass doors enhance your display
- The interior is provided with a lighting system to maximize visibility
- Equipped with heated safety glass

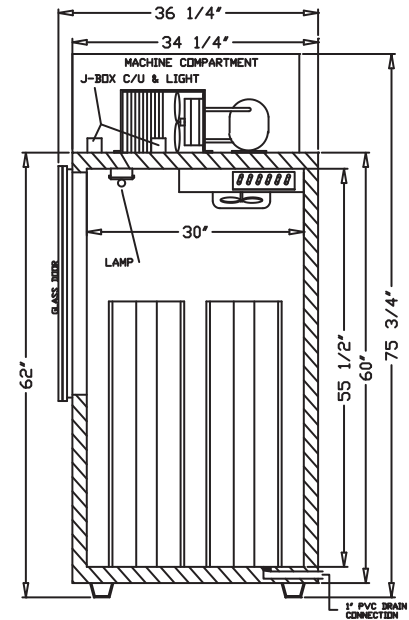
| Model No. | Description | Voltage | Amps | Temp        | HP  | Est. Ship Weight |
|-----------|-------------|---------|------|-------------|-----|------------------|
| ICB-1-GL  | 1 Door      | 115     | 10   | 23°F - 30°F | 1/3 | 494#             |
| ICB-2-GL  | 2 Doors     | 115     | 12   | 23°F - 30°F | 1/2 | 658#             |
| ICB-2-L-G | 2 Doors     | 115     | 12   | 23°F - 30°F | 1/2 | 774#             |

# Technical Data / Ice Merchandisers - Indoor



| Model #                    | ICB-1-GL  | ICB-2-GL  | ICB-2-L-G |
|----------------------------|-----------|-----------|-----------|
| <b>Outside Dimensions</b>  |           |           |           |
| Depth                      | 36.25"    | 36.25"    | 36.25"    |
| Length                     | 55.5"     | 76.25"    | 96"       |
| Height                     | 75.75"    | 75.75"    | 75.75"    |
| <b>Door Size</b>           |           |           |           |
| Door Type                  | 1 swing   | 2 swing   | 2 swing   |
| <b>Inside Dimensions</b>   |           |           |           |
| Depth                      | 30"       | 30"       | 30"       |
| Length                     | 51"       | 72"       | 92"       |
| Height                     | 55.5"     | 55.5"     | 55.5"     |
| # of 7lb bags              | 150       | 225       | 300       |
| Capacity: Cubic Foot       | 47        | 60        | 85        |
| <b>Specifications</b>      |           |           |           |
| Operating Temperature      | 23°F-30°F | 23°F-30°F | 23°F-30°F |
| Refrigerant                | 134a      | 134a      | 134a      |
| Compressor Size HP         | 1/3       | 1/2       | 1/2       |
| Defrost                    | 3@30min   | 3@30min   | 3@30min   |
| Voltage                    | 115       | 115       | 115       |
| Amperage                   | 10.0      | 12.0      | 12.0      |
| Cord and Plug              | yes       | yes       | yes       |
| <b>Shipping Dimensions</b> |           |           |           |
| Depth                      | 44"       | 44"       | 44"       |
| Length                     | 62"       | 83"       | 102"      |
| Height                     | 82"       | 82"       | 82"       |
| Gross Weight lbs.          | 494       | 658       | 774       |
| Cubic feet                 | 129       | 173       | 228       |

**ICB-1-GL  
ICB-2-GL  
ICB-2-L-G**



- Cases are designed to operate at 75°F and 55% relative humidity.
- Specification subject to change without notice.

