



The Signature of Quality®

FEDERAL INDUSTRIES

A Standex Company

215 Federal Avenue
Belleville, WI 53508-9201

Phone: 800-356-4206

Fax: 608-424-3234

Email: geninfo@federalind.com

Website: www.federalind.com

Project Name: _____

Item #: _____

Model #: _____ Qty: _____

Approval: _____

AIA#

SIS#

UNDER COUNTER - Square End, Refrigerated, Self-Serve Display Case

Incorporate into your own counter to drive product sales. The under counter display case will entice customers with last minute impulse sales through visual appeal.



Shown with optional accessories

MODEL	DIMENSIONS (Includes End Panels)
<input type="checkbox"/> UCR3633S	35.7 x 34 x 32.5 (in) 907 x 864 x 826 (mm)
<input type="checkbox"/> UCR4833S	47.7 x 34 x 32.5 (in) 1212 x 864 x 826 (mm)
<input type="checkbox"/> UCR6033S	59.7 x 34 x 32.5 (in) 1516 x 864 x 826 (mm)
<input type="checkbox"/> UCR7233S	71.7 x 34 x 32.5 (in) 1821 x 864 x 826 (mm)

STANDARD FEATURES

Model Features

- Black powder coated steel base
- Black interior back panel
- Squared ends
- Black top
- Black 2 step riser
- Black laminate exterior. Other finishes optional
- Light and power switch on back of case
- Front access to refrigeration system for quick and easy service
- Cord & plug
- Adjustable leg levelers
- Recessed casters

Refrigeration

- On-Demand PTC condensate evaporator provided for a totally self-contained system
- Electronic temperature controls maintain 38°-40°F
- Easy clean, rustproof insulated evaporator coil compartment
- Rear condensing unit air intake & discharge
- R513a refrigerant
- Thermometer

Lighting

- LED top light

Agency Approvals

- UL, C-UL and UL Sanitation listed to NSF-7, Type II conditions
- DOE 2017 compliant

OPTIONAL ACCESSORIES

- | | |
|---|---|
| <input type="checkbox"/> White or stainless interior
(Including step riser or shelf) | <input type="checkbox"/> 6" Legs |
| <input type="checkbox"/> Glass, stainless steel, white or
black solid shelf w/ LED light | <input type="checkbox"/> 4" Casters |
| <input type="checkbox"/> Squared ends w/ mirrored interior | <input type="checkbox"/> Front air intake and discharge |
| <input type="checkbox"/> Special exterior finish | |
| <input type="checkbox"/> Stainless steel top | |
| <input type="checkbox"/> Clear or reflective end glass panels | |
| <input type="checkbox"/> Energy saving night curtain | |
| <input type="checkbox"/> Security night cover | |
| <input type="checkbox"/> Condensate pump | |



WARRANTY*
One year Parts and Labor
2nd thru 5th year part
only service compressor
(U.S.A and Canada)



Note: Information is subject to change at any time.
Visit www.federalind.com for the most current specs.

Revised 04/05/2023

AIA#

UNDER COUNTER - Square End, Refrigerated, Self-Serve Display Case


SIS#


Product Specifications

Intended Environment: Type II - Designed to operate in maximum ambient conditions of 80°F (24°C) and 55% relative humidity.

Zone	Intended Product To Be Displayed	Avg Prod Temp °F/°C
All	Packaged Refrigerated Products	38°F / (3.3°C)

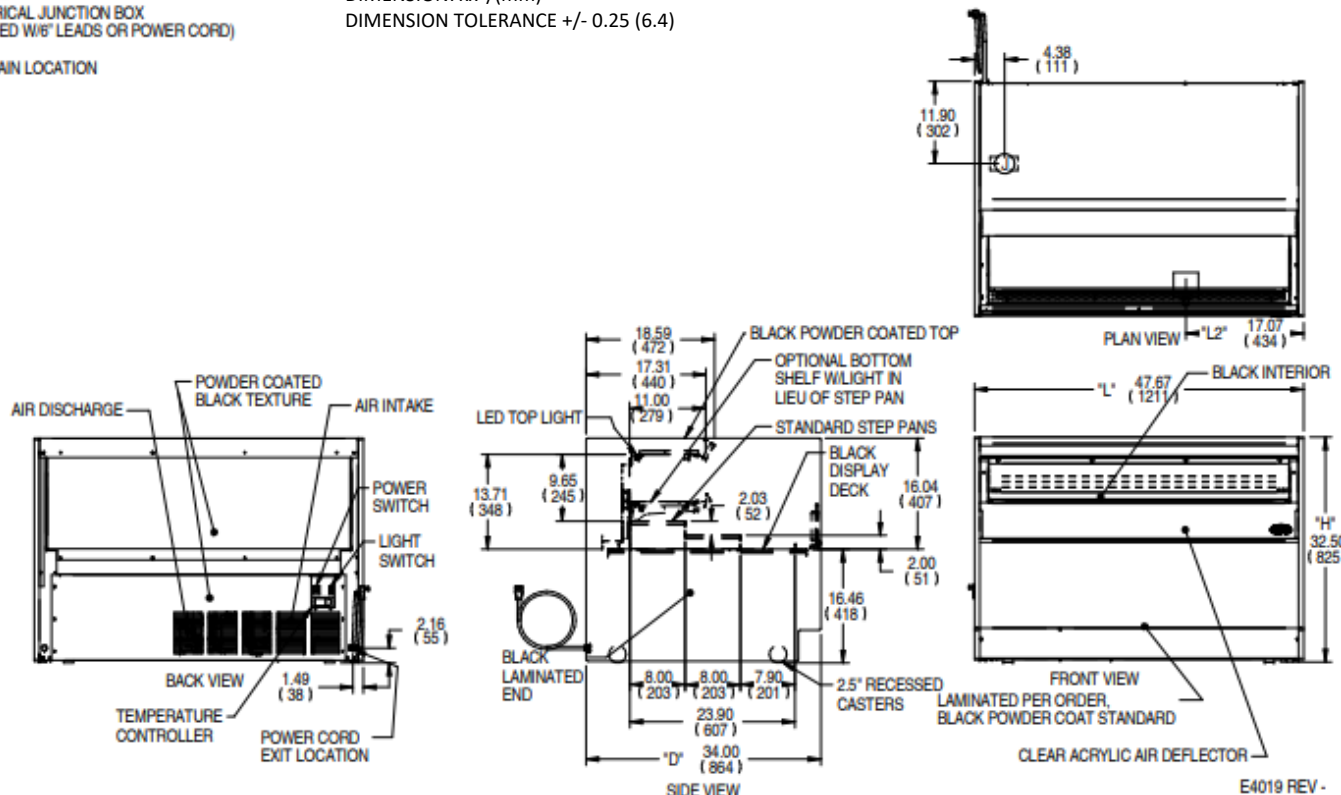
SYMBOL KEY:

 ELECTRICAL JUNCTION BOX
(SUPPLIED W/6' LEADS OR POWER CORD)

 TUB DRAIN LOCATION

DIMENSION: xx"/(mm)

DIMENSION TOLERANCE +/- 0.25 (6.4)



E4019 REV -

MODEL	DIMENSION			TUB DRAIN	STEP RISER			INTERIOR VOLUME CU FT	PERMANENT CONNECT			NEMA CORD & PLUG	REFRIGERANT	C.U. HP
	L	D	H		L2	# OF STEPS	D		L	2-WIRE + GROUND				
	in	in	in		in		in		in	ELECTRICAL	AMPS	MAX FUSE SIZE		
	mm	mm	mm		mm		mm		mm					
UCR3633	35.7	34.0	32.5	4.34	2	8.00	33.6	4.52	120/60/1	12.3	20	5-20	R513a	1/2
	907	864	826	110		203	853							
UCR4833	47.7	34.0	32.5	17.01	2	8.00	45.6	6.11	120/60/1	12.5	20	5-20	R513a	1/2
	1212	864	826	432		203	1158							
UCR6033	59.7	34.0	32.5	26.01	2	8.00	57.6	7.70	120/60/1	13.0	20	5-20	R513a	3/4
	1516	864	826	661		203	1463							
UCR7233	71.7	34.0	32.5	33.01	2	8.00	69.6	9.28	120/60/1	13.5	20	5-20	R513a	3/4
	1821	864	826	838		203	1768							

- Case temperature will vary if the air curtain is disrupted.
- Due to continuing engineering improvements, specifications are subject to change without notice.

DOE 2017
Energy Efficiency
Compliant



The Signature of Quality

FEDERAL INDUSTRIES

A Standex Company

215 Federal Avenue Belleville, Wisconsin 53508-9201

Phone: 800-356-4206

Fax: 608-424-3234

Email: Geninfo@Federalind.com

Website: Federalind.com