



## Ice Merchandisers - Outdoor



**ICB-1-SLANT**

Height . . . . . 74.00"  
 Length . . . . . 47.75"  
 Depth . . . . . 34.25"



**ICB-1**

Height . . . . . 75.75"  
 Length . . . . . 55.50"  
 Depth . . . . . 36.25"



**ICB-2**

Height . . . . . 75.75"  
 Length . . . . . 76.25"  
 Depth . . . . . 36.25"

### Features

- Exterior cabinet made of white or black vinyl clad steel
- Custom front trim enhances cabinet appearance
- Hinged door with chrome plated hardware seals magnetically
- Reinforced 16 gauge galvanized steel base
- Foamed in place high density CFC free polyurethane foam insulation
- Heavy duty galvanized steel interior with air distribution channels
- High capacity blower cooled refrigeration system with automatic defrost
- Self contained heavy duty 134a condensing unit
- Graphics are visible on three sides for maximum merchandising effect



**ICB-2-L**  
 (FORMALLY ICB-100)

Height . . . . . 75.75"  
 Length . . . . . 96.00"  
 Depth . . . . . 36.25"

Model No.	Description	Voltage	Amps	Temp	HP	Est. Ship Weight
ICB-1-SLANT	1 Door Solid	115	10	23°F - 30°F	1/3	494#
ICB-2-SLANT	2 Door Solid	115	12	23°F - 30°F	1/2	635#
ICB-1	1 Door Solid	115	10	23°F - 30°F	1/3	494#
ICB-2	2 Doors Solid	115	12	23°F - 30°F	1/2	658#
ICB-2-L	2 Doors Solid	115	12	23°F - 30°F	1/2	774#

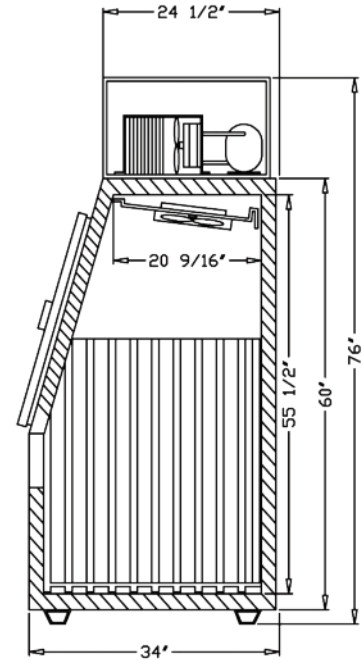




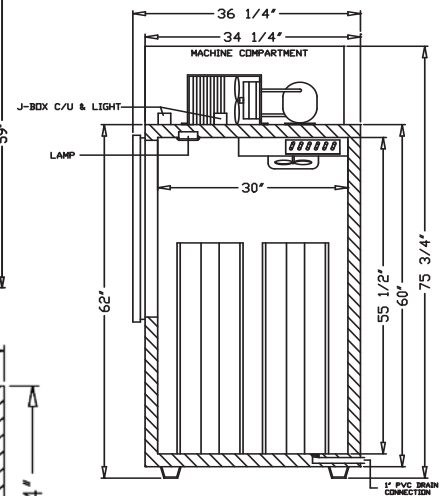
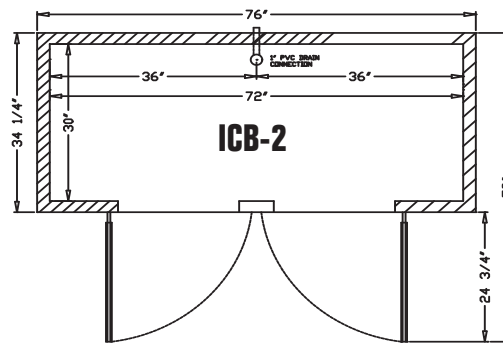
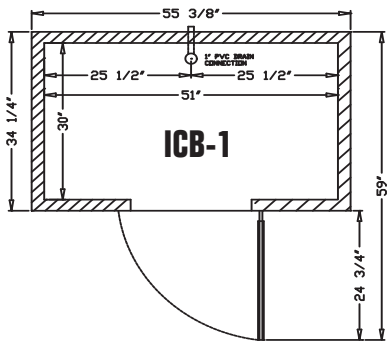
# Technical Data / Ice Merchandisers - Outdoor

Model #	ICB-1	ICB-2	ICB-2-L	ICB-1-Slant
<b>Outside Dimensions</b>				
Depth	36.25"	36.25"	36.25"	34.00"
Length	55.45"	76.00"	96.00"	47.75"
Height	75.75"	75.75"	75.75"	76.00"
<b>Door Size</b>				
Door Type	1 swing	2 swing	2 swing	1 swing
<b>Inside Dimensions</b>				
Depth	30.00"	30.00"	30.00"	29.75"
Length	51.00"	72.00"	92.00"	48.9"
Height	55.50"	55.50"	55.50"	54.00"
# of 7lb bags	150	225	300	125
Capacity: Cubic Foot	47	60	85	40
<b>Specifications</b>				
Operating Temperature	23°F-30°F	23°F-30°F	23°F-30°F	23°F-30°F
Refrigerant	134a	134a	134a	134a
Compressor Size HP	1/3	1/2	1/2	1/3
Defrost	3@30min	3@30min	3@30min	3@30min
Voltage	115	115	115	115
Amperage	10.0	12.0	12.0	10.0
Cord and Plug	yes	yes	yes	yes
<b>Shipping Dimensions</b>				
Depth	41.00"	41.00"	41.00"	41.00"
Length	60.00"	81"	101"	54"
Height	82.00"	82.00"	82.00"	80"
Gross Weight lbs.	494	658	774	494
Cubic feet	116	157	196	105

**ICB-1-SLANT**



- Cases are designed to operate at 75°F and 55% relative humidity.
- Specification subject to change without notice.



**ICB-1  
ICB-2  
ICB-2-L**

