



Master Series Heavy Duty Combination Top Range

Item: _____
 Quantity: _____
 Project: _____
 Approval: _____
 Date: _____

Master Series Heavy Duty Combination Top Range

Models:

- MST54R MST54S MST54T MST54R-E MST54S-E MST54T-E

Range with Front-Fired Hot Top and Two Open Burners



*Model MST54R
(valve control panel not as depicted)*

Standard Features:

- Stainless steel front; black powder coat epoxy sides
- 6" (152mm) chrome steel adj. legs
- 7-1/2" (191mm) stainless steel front rail
- One heavy duty cast iron front-fired top on left
- Removable cast iron ring and lid with 3 individually controlled jet burners; 40,000 BTU (11.71kW) total, 30,000 BTU (8.78kW) for CSA approved propane models
- Two (2), 2-piece Starfire open burners w/removable heads rated 30,000 BTU (8.78kW) CE approved or 35,000 BTU (10.25kW) CSA approved models, (natural or propane gas)
- Removable ring grate bowl over each burner
- Cast iron top grates
- One piece stainless steel drip tray
- Piezo spark ignition for oven.
- 40,000 BTU (11.72kW) natural gas, 35,000 BTU (10.25kW) propane gas cast iron oven burner
- Fully porcelainized oven interior
- Electric Spark ignition on all pilots
Suffix -E models
- Sentry total flame failure protection for all burners

Optional Features:

- Hot top section on right - specify

- Stainless steel oven interior
- Stainless steel left, right, both sides or main back
- Stainless steel common front rail up to 102" (2591mm) wide (two or more units in a battery)
- Convection oven base, add C to model #, e.g. MST54RC
- Additional oven rack
- Rear gas connection 3/4", 1" or 1-1/4" NPT, left or right mount add 5-1/4" (133mm) to exterior range width
- Gas regulator 3/4" or 1-1/4"
- Gas shut off valve; 3/4", 1" or 1-1/4" NPT
- Gas flex hose & quick disconnect (3/4", 1" or 1-1/4" NPT x 5') w/restraining device, please specify
- End caps and cover (NC, specify)
- Polyurethane non-marking swivel casters (4) w/ front brakes
- Dais base (not for use with "RC" oven)
- 6" (152mm) stainless steel adj. legs
- Storage base shelf of aluminized or stainless steel.
- Stainless steel tubular high shelf, single or double deck
- Stainless steel backguard: 10" (354mm), 17" (432mm) or 33" (838mm)
- 230 volt, 50 cycle components, RC motor and/or electric ignition (export)
- Celsius dial for oven thermostat (NC)

Specifications:

Heavy duty gas range with oven, Model MST54R, combination top consisting of one 17" (432mm) wide front fired spectro-heat hot top, 40,000 BTU (11.71kW) on left and two 30,000 BTU (8.78kW) StarFire open burners. Sentry total flame failure protection for all burners. Heavy duty cast iron top grates/ring grates. 34" (864mm) wide x 38" (965mm) deep, including 7-1/2" (191mm) deep stainless steel front rail. Porcelain enamel oven with 40,000 BTU (11.72kW), cast iron oven burner. Stainless steel front with black powder epoxy sides. Natural or Propane gas available. Also available with storage base w/ doors, suffix S, and modular top, suffix T.



NOTE: Ranges supplied with casters must be installed with an approved restraining device.

Garland Commercial Ranges Ltd.
 1177 Kamato Road,
 Mississauga, Ontario
 L4W 1X4 CANADA

General Inquiries 1-905-624-0260
 USA Sales, Parts and Service 1-800-424-2411
 Canadian Sales 1-888-442-7526
 Canada or USA Parts/Service 1-800-427-6668



Product	Width: In(mm)	Depth: In(mm)	Height: In(mm) (w/ NSF Legs)	Height: In(mm) (w/o NSF Legs)	Oven/Storage Base Interior: in(mm)		
					Width	Depth	Height
MST54R	34(864)	38(965)	36-3/8(924)	30-3/8(772)	26-1/4(667)	29(737)**	13-1/2(343)
MST54S	34(864)	38(965)	36-3/8(924)	36-3/8(924)	26(665)	30-1/2(773)	20-1/2(519)
MST54T	34(864)	38(965)	36-3/8(924 w/stand)	9-1/2(241) w/o stand*	N/A	N/A	N/A

*Modular top has 1-1/2" seating flanges. **RC oven is 25" (635mm) deep.

INPUT-BTU/hr (kW)	MST54R(C)		MST54S & MST54T		Gas input ratings shown here are for installations up to 2,000 ft. (610m) above sea level. Specify altitudes over 2,000 ft.
	Natural	Propane	Natural	Propane	
Hot Top Section CE Approved Models	40,000 (11.71)	40,000 (11.71)	40,000 (11.71)	40,000 (11.71)	
Hot Top Section CSA Approved Models	40,000 (11.71)	30,000 (8.78)	40,000 (11.71)	30,000 (8.78)	
Open Top: CE Approved Models	60,000 (17.57)	60,000 (17.57)	60,000 (17.57)	60,000 (17.57)	
Open Top: CSA Approved Models	70,000 (20.50)	70,000 (20.50)	70,000 (20.50)	70,000 (20.50)	
Oven: CE and CSA Approved Models	40,000 (11.71)	35,000 (10.25)	N/A	N/A	

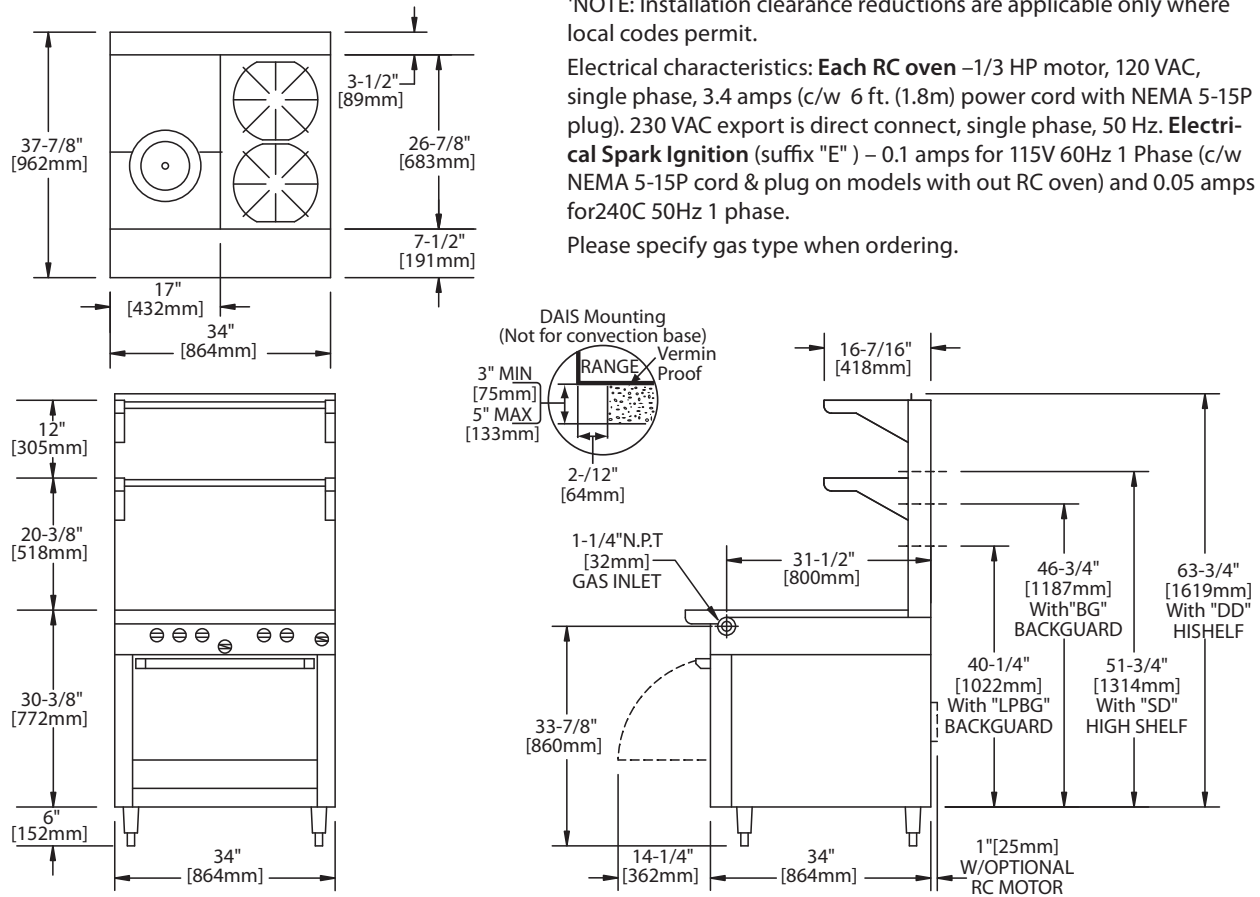
RC=Range w/Convection Oven R=Range w/Oven S=Range w/Storage Base T=Modular Top

INSTALLATION NOTES			Shipping: Wt (Lb/Kg) Cu Ft
Combustible Wall Clearances ¹	Entry Clearances	Operating Pressure	MST54R 475/216 – 50 MST54S 375/170 – 50 MST54T 285/130 – 20
Sides: 14" (356mm) Back: 6" (152mm)	Crated: 39-1/4" (997mm) Uncrated: 34-1/4" (870mm)	Natural: 6" WC (15mbar) Propane: 10" WC (25mbar)	

¹NOTE: Installation clearance reductions are applicable only where local codes permit.

Electrical characteristics: **Each RC oven** –1/3 HP motor, 120 VAC, single phase, 3.4 amps (c/w 6 ft. (1.8m) power cord with NEMA 5-15P plug). 230 VAC export is direct connect, single phase, 50 Hz. **Electrical Spark Ignition** (suffix "E") – 0.1 amps for 115V 60Hz 1 Phase (c/w NEMA 5-15P cord & plug on models with out RC oven) and 0.05 amps for 240C 50Hz 1 phase.

Please specify gas type when ordering.



Form# MST54 (05/27/13)