



# "GS6-" Equipment Stands

w/ 16 Gauge Stainless Steel Work Top  
w/ Stainless Steel Base



16 GAUGE TOP w/ STAINLESS STEEL BASE

<b>Without Lower Shelf</b>					
24"WIDE	Qty	30"WIDE	Qty	36"WIDE	Qty
GS6-2436SBK		GS6-3036SBK		-	
GS6-2448SBK		GS6-3048SBK		GS6-3648SBK	
GS6-2460SBK		GS6-3060SBK		GS6-3660SBK	
GS6-2472SBK		GS6-3072SBK		GS6-3672SBK	
<b>With Lower Shelf</b>					
GS6-2436SSK		GS6-3036SSK		-	
GS6-2448SSK		GS6-3048SSK		GS6-3648SSK	
GS6-2460SSK		GS6-3060SSK		GS6-3660SSK	
GS6-2472SSK		GS6-3072SSK		GS6-3672SSK	

**FEATURES:**

- \* 16 Gauge Stainless Steel Top  
Type 300 stainless steel with # 3 polish, satin finish
- \* 1-1/2" turned up Back and Both Ends, w/ 7/8" radius front edge
- \* Top is reinforced by a full frame fabricated of 1-1/2" square O.D. tube 16 gauge pre-galvanized steel.
- \* Stainless Steel Base and Bracing and or Shelf
- \* Bracing or Shelve adjustable to desired height
- \* Adjustable bullet feet
- \* Shipped knocked-down, easy - to - assemble
- \* All models are approved by the National Sanitation Foundation and



**CONSTRUCTION:**

Top: Stainless Steel Tops are TIG welded, Exposed welds are polished to match adjacent surface.  
Base: Stainless Steel frame is MIG welded

**MATERIAL:**

Top: 16 gauge Stainless Steel  
Type 300 stainless steel with # 4 polish, satin finish  
Bracing: 1 1/4" Round O.D. 18 gauge tubular stainless steel  
Shelf: 18 gauge Stainless Steel Steel  
Legs: 1 5/8" Round O.D., 16 gauge tubular galvanized steel  
Gussets: Stainless Steel  
Feet: 1" adjustable galvanized bullet feet

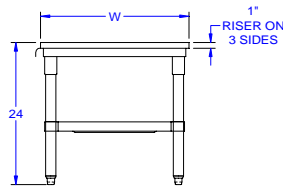
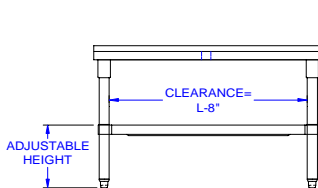
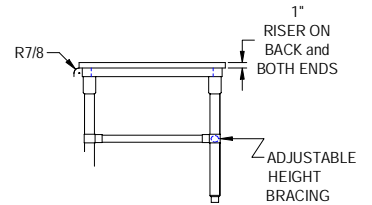
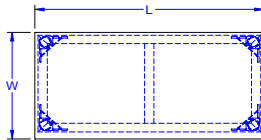
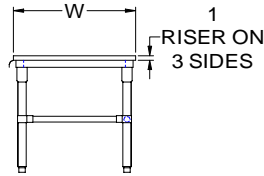
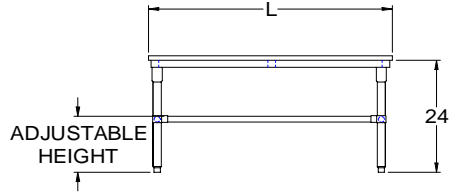
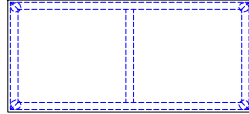
**OPTIONAL ACCESSORIES**

	MODEL #	Qty
MAPLE CUTTING BOARDS		
WELDED SET-UP		

**John Boos & Co**

315 South First Street - Effingham, IL 62401  
Phone: 217-347-7701 - Fax: 217-347-7705  
Email: sales@johnboos.com - Web-site: www. johnboos.com

# DETAILED SPECIFICATIONS



All units ship unassembled for reduced shipping cost.  
 All dimensions are typical.  
 Tolerance +/- .500".

## 16 GAUGE TOP & BRACING

Without Lower Shelf						
L	24" WIDE	WT.	30" WIDE	WT.	36" WIDE	WT.
36	GS6-2436SBK	65	GS6-3036SBK	69	-	-
48	GS6-2448SBK	80	GS6-3048SBK	90	GS6-3648SBK	100
60	GS6-2460SBK	95	GS6-3060SBK	111	GS6-3660SBK	127
72	GS6-2472SBK	111	GS6-3072SBK	132	GS6-3672SBK	154
With Lower Shelf						
36	GS6-2436SSK	75	GS6-3036SSK	75	-	-
48	GS6-2448SSK	90	GS6-3048SSK	100	GS6-3648SSK	110
60	GS6-2460SSK	115	GS6-3060SSK	131	GS6-3660SSK	147
72	GS6-2472SSK	141	GS6-3072SSK	162	GS6-3672SSK	184

### John Boos & Co

315 South First - Effingham, IL 62401 Phone: 217-347-7701 - Fax: 217-347-7705

Email: sales@johnboos.com - Web-site: www.johnboos.com



November 2010

John Boos is constantly engaged in a program of improving products and therefore reserves the right to change specification without prior notice