

Master Series Spreader Plates & Cabinets

Project _____
 Item _____
 Quantity _____
 CSI Section 11400
 Approved _____
 Date _____

Models

- M12ES
- M12SP
- M17ES
- M17SP
- M24ES
- M24SP
- M24SPT



Model M17ES
Shown with Optional
Backguard

*Note all spreader plate and cabinet models require a high shelf or back guard.

Standard Features

- Stainless steel front and sides
- 7-1/2" (191mm) stainless steel front rail
- Stainless steel top plate
- 1-1/4" NPT manifold joins adjacent equipment
- Cabinet storage base interior of aluminized steel

Options & Accessories

- Stainless steel back
- Stainless steel common front rail up to 68" (1728mm) wide (two or more units in a battery)
- Stainless steel tubular high shelf, single or double-deck
- Stainless steel backguard: 10" (354mm), 17" (432mm) or 33" (838mm) High
- 1 1/4" and 2" NPT rear gas connection for 12" (308mm), 17" (432mm), and 24" (610mm) spreaders.
- Swivel casters (4) w/front brakes, (cabinets only)
- Polyurethane non-marking swivel casters (4) w/front brakes (cabinets only)
- 6" (152mm) stainless steel adjustable legs (cabinets only)
- Storage base shelf of aluminized or stainless steel in 17" (432mm) and 24" (610mm) cabinets.

Specifications

Spreader plates provide additional work space between ranges or at the end of a battery.

A 1-1/4" NPT manifold joins adjacent equipment for a continuous battery design, protected by a stainless steel manifold cover.

Standard widths are 12" (610mm), 17" (432mm) and 24" (610mm), (Special sizes are available.)

Spreader plate is available as modular (24") or cabinet base.

Front enclosures are available as stainless steel and completely removable pieces as special.

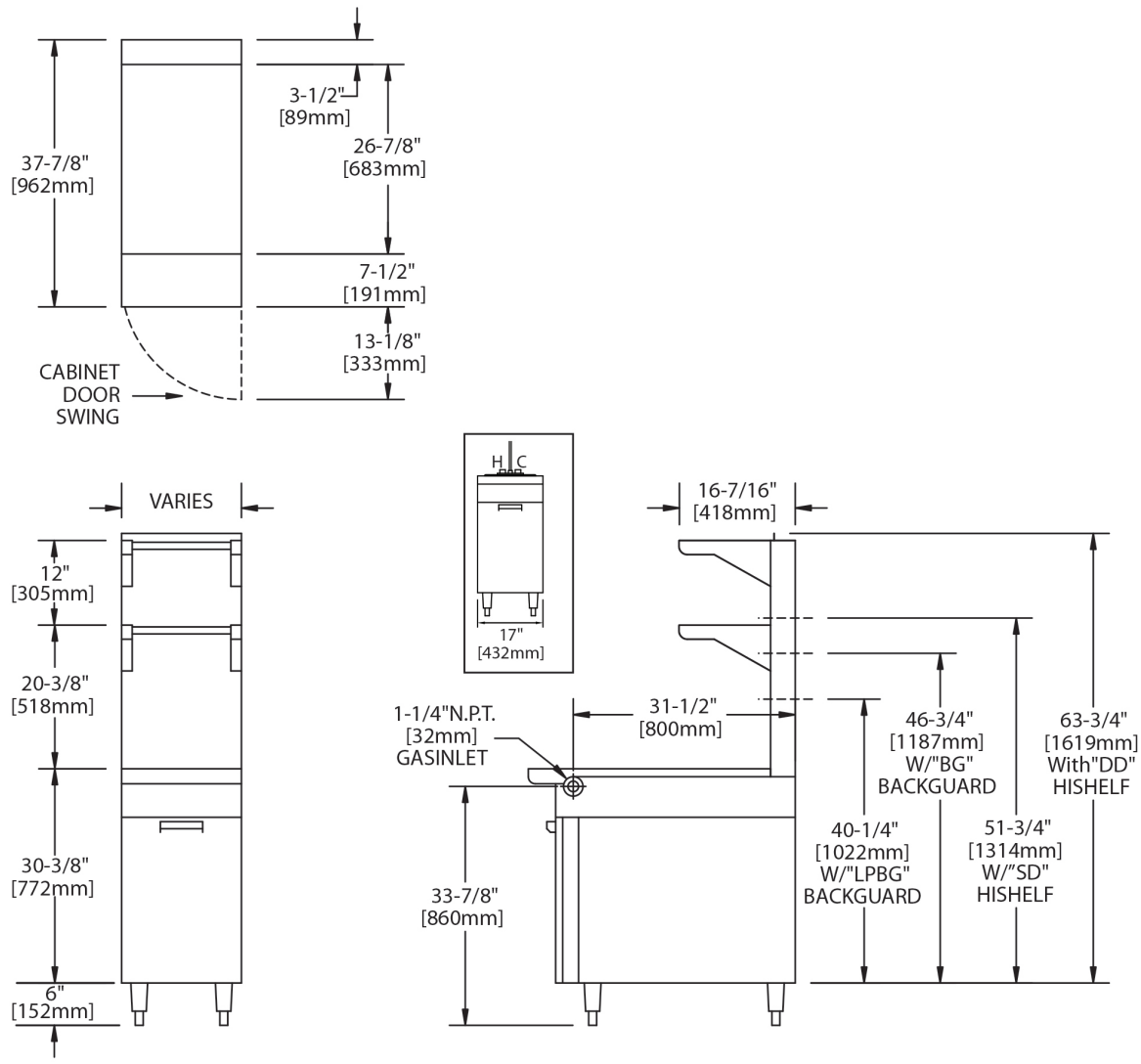
Available in standard widths listed above, as well as special sizes.

Cabinets have stainless steel doors and sides on 17" (432mm) and 24" (610mm).



Master Series Spreader Plates & Cabinets

Master Series Spreader Plates & Cabinets



Model Number Suffixes:

SP = Spreader Plate only. Available in 12" (308mm), 17" (432mm) and 24" (610mm). and 34" (864mm) widths*

SPT = 24" (610mm) Spreader Plate - "Modular" to match other modular top sections and for use with refrigerated bases.

ES = Full Spreader Cabinet. Available in 12" (308mm), with door on 17" (432mm) and 24" (610mm).*

* Special widths available upon request (additional charge).

SHIPPING		
Model	Lb/Kg	Cu. Ft.
M12ES	125/56	19
M12SP	50/23	7
M17ES	175/79	20
M17SP	75/34	9
M24ES	190/86	24
M24SP	105/48	11
M24SPT	105/48	11

Garland reserves the right to make changes to the design or specifications without prior notice.

Garland Commercial Ranges Ltd.
1177 Kamato Road,
Mississauga, Ontario
L4W 1X4 CANADA

General Inquires 1-905-624-0260
USA Sales, Parts and Service 1-800-424-2411
Canadian Sales 1-888-442-7526
Canada or USA Parts/Service 1-800-427-6668

www.garland-group.com
8165A
07/25

