

|                          |            |
|--------------------------|------------|
| Project: _____           | AIA# _____ |
| Item #: _____ Qty: _____ | SIS# _____ |
| Model #: _____           |            |

# Liquor Steps

|             |                           |
|-------------|---------------------------|
| <b>C-LD</b> | C-LD-12, C-LD-18, C-LD-24 |
|-------------|---------------------------|



C-LD-18



**Intertek**  
4004503  
Conforms to ANSI/NSF STD 2

### Standard Features

- Easily usable height for storage
- All stainless steel construction and thermoplastic bullet feet
- Five (5) levels of liquor bottle storage
- Integrated bottle retaining rails
- Front rail matches speed rail appearance for design continuity
- Rear step on each model is extra wide (4-3/4") for specialty liquor bottles

### Configurable Options

#### Locking Cover

- The removable locking cover is one-piece and foldable for easy storage. The liquor steps are lowered 4" to accommodate the locking cover.

### Specifications

#### Legs

- 1-5/8" diameter, 16 gauge stainless steel
- Thermoplastic bullet feet

#### Materials

- 20 gauge stainless steel parts include: all components unless otherwise noted
- 14 gauge stainless steel parts include: sides



Locking cover configurable option shown on C-LD-12



12" locking cover unfolded



12" locking cover folded

To view cleaning and care instructions, please visit: [https://glastender.com/PDF/F-423-011\\_ss\\_clean\\_care.pdf](https://glastender.com/PDF/F-423-011_ss_clean_care.pdf)

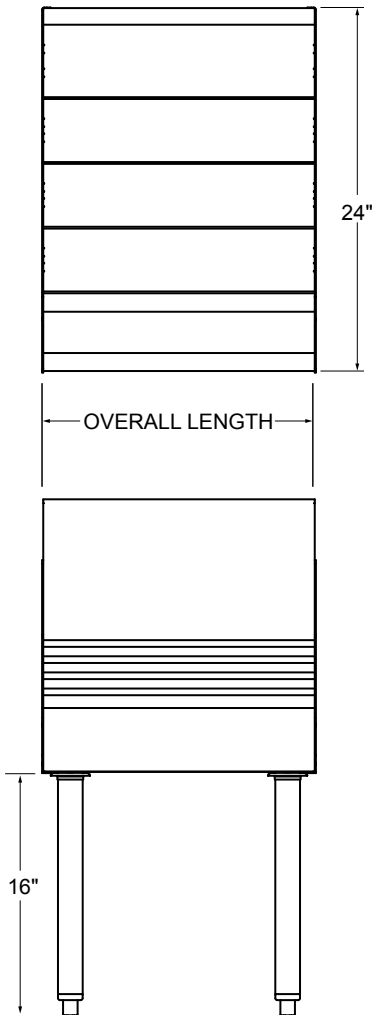
|   |                        |
|---|------------------------|
| <p><b>Glastender, Inc.</b> • 5400 North Michigan Road • Saginaw, MI • 48604-9780<br/>989.752.4275 • 800.748.0423 • Fax 989.752.4444<br/><a href="https://glastender.com">https://glastender.com</a></p> | <p>Approval/Notes:</p> |
| <p><small>Specifications subject to change without notice. For current specifications please visit our website.</small></p>   |                        |

# Choice Liquor Steps

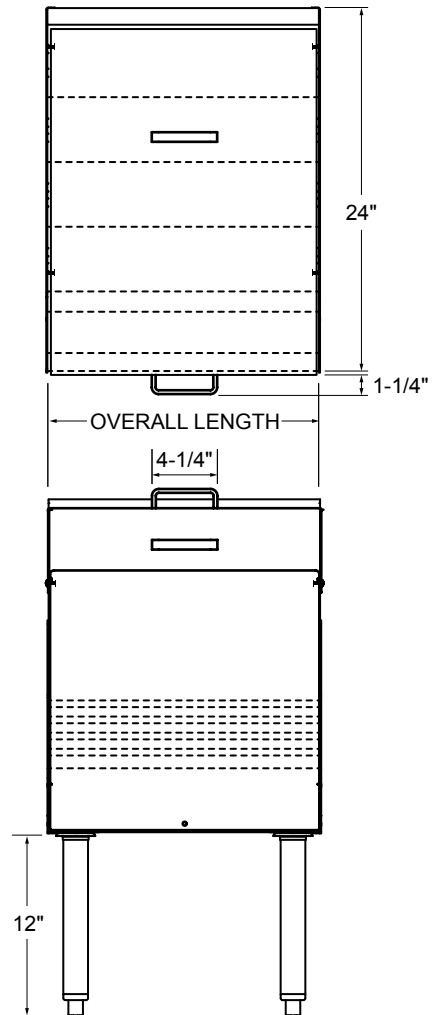
## Dimensional Information

| Model Number | Overall Length |
|--------------|----------------|
| C-LD-12      | 12"            |
| C-LD-18      | 18"            |
| C-LD-24      | 24"            |

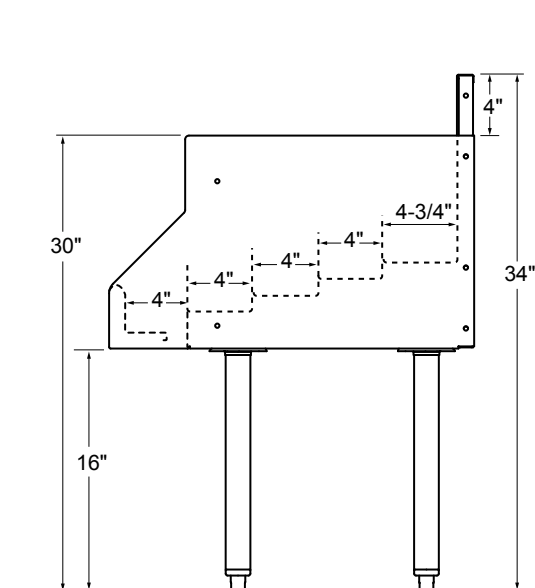
WITH LOCKING COVER



PLAN VIEW



FRONT ELEVATION



SIDE ELEVATION

