

Project: _____	AIA# _____
Item #: _____ Qty: _____	SIS# _____
Model #: _____	

Clip-On Speed Rails

(model numbers on reverse side)



CSR-24-SR



Standard Features

- All stainless steel construction
- Open channel-and-rail design for easy cleaning and better view of bottles
- PVC sound deadening covers
- Single and double tier models
- Three types for clipping to glasswashers, vertical surfaces, and other Glastender speed rails
- Retaining rails have a clear lift-off liquor identification cover

To view cleaning and care instructions, please visit: https://www.glastender.com/PDF/F-423-011_ss_clean_care.pdf

Specifications	Product Information
-----------------------	----------------------------

Materials

- 20 gauge stainless steel parts include: liquor steps and front rails
- 18 gauge stainless steel parts include: one piece ends, back and clip on glasswasher and cocktail station models
- 16 gauge stainless steel parts include: clip on speed rail models
- 14 gauge stainless steel parts include: ends on speed rail models

Clip-on speed rails come in three different styles based on the particular mounting situation. The CSR-X-SR models, where X = the length of the unit in inches from 12" to 48", are designed to clip to an existing Glastender single or double speed rail.

The CSR-16 and CSR-22 are 16" and 22" clip-on single speed rails for use with the GT-24 and GT-30 glasswashers, respectively. The CDSR-16 and CDSR-22 are double versions used for the same purpose.

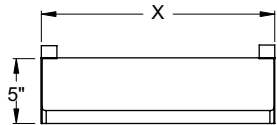
The CS-35-CS is a 35" clip-on single speed rail used to clip to the front panel of a pass thru style cocktail station.

Glastender, Inc. • 5400 N Michigan Rd • Saginaw, MI • 48604-9780 989.752.4275 • 800.748.0423 • Fax 989.752.4444 www.glastender.com	Approval/Notes:
Specifications subject to change without notice. For current specifications please visit our website.	

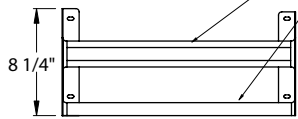
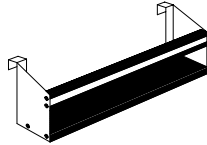
Clip-On Speed Rails

Dimensional Information

FOR CLIPPING TO EXISTING GLASTENDER SPEED RAILS

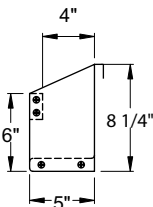


PLAN VIEW



FRONT ELEVATION

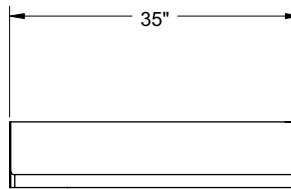
PVC PLASTIC COVER
OVER STAINLESS STEEL
"C" CHANNEL



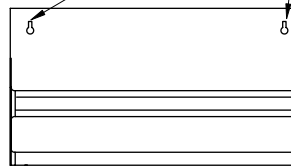
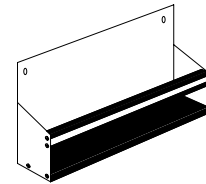
SIDE ELEVATION

X = LENGTH FROM 12" TO 48"

FOR CLIPPING TO THE FRONT PANEL OF A
GLASTENDER PASS THRU COCKTAIL STATION

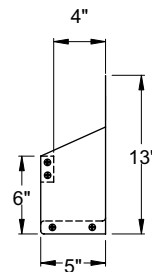


PLAN VIEW



FRONT ELEVATION

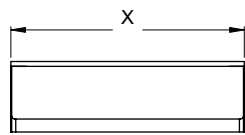
BACK IS KEY HOLED TO
ATTACH TO A FRONT PANEL
OF A COCKTAIL STATION.



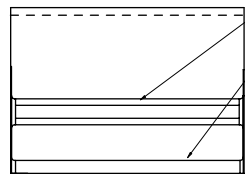
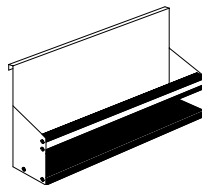
SIDE ELEVATION

CSR- X -SR

FOR CLIPPING TO A GLASTENDER GT-24
OR GT-30 GLASSWASHER

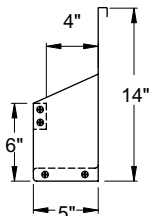


PLAN VIEW



FRONT ELEVATION

PVC PLASTIC COVER
OVER STAINLESS STEEL
"C" CHANNEL

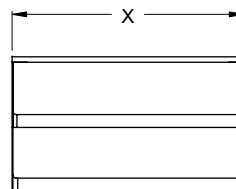


SIDE ELEVATION

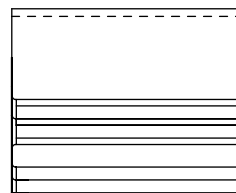
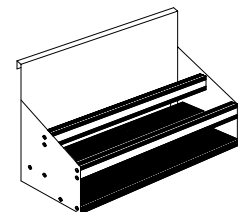
X = 16" FOR GT-24
22" FOR GT-30

CSR-35-CS

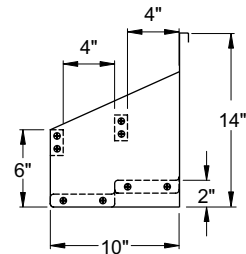
FOR CLIPPING TO A GLASTENDER GT-24
OR GT-30 GLASSWASHER



PLAN VIEW



FRONT ELEVATION



SIDE ELEVATION

X = 16" FOR GT-24
22" FOR GT-30

CSR-16 or CSR-22

CDSR-16 or CDSR-22



5400 N Michigan Rd • Saginaw, MI • 48604-9780
989.752.4275 • 800.748.0423 • Fax 989.752.4444
www.glastender.com