

# Glastender®

A family company manufacturing in the USA

[www.glastender.com](http://www.glastender.com)



DBA-18 shown with optional speed rail



**Intertek**

4004503  
Conforms to ANSI/NSF STD 2

## Specifications

### Drain

- 1/2" welded tailpiece. Clear vinyl drain line and one 1/2" by 1/2" barbed plastic elbow is provided

### Legs

- 1-5/8" diameter, 16 gauge stainless steel
- Stainless steel bullet feet

### Materials

- 20 gauge stainless steel

Project: _____	AIA# _____
Item #: _____ Qty: _____	SIS# _____
Model #: _____	

## Drainboards

**DB**

DBA-12, DBA-18, DBA-24, DBA-30, DBA-36,  
DBA-42, DBA-48

### Standard Features

- All stainless steel
- Adjustable stainless steel bullet feet
- Work surface consists of a drain pan and separate perforated insert for better air circulation
- One piece, seamless top and backsplash featuring 1/4" radius corners for easy cleaning
- All storage is on a level plane

### Configurable Options

- 6" incremental lengths from 12" to 48"
- 4" by 4" by 6-1/2" high tubing chase, specify a "TC" line item
- Flat stainless steel filler board top in lieu of drainboard top, substitute "F" for "D" in the model number

### Accessories

- SSR Single speed rail  
DSR Double speed rail

To view underbar installation instructions, please visit: [https://www.glastender.com/PDF/F-750-165\\_Underbar\\_Installation\\_Instructions.pdf](https://www.glastender.com/PDF/F-750-165_Underbar_Installation_Instructions.pdf)  
To view cleaning and care instructions, please visit: [https://www.glastender.com/PDF/F-423-011\\_ss\\_clean\\_care.pdf](https://www.glastender.com/PDF/F-423-011_ss_clean_care.pdf)

**Glastender, Inc.** • 5400 North Michigan Road • Saginaw, MI • 48604-9780  
989.752.4275 • 800.748.0423 • Fax 989.752.4444  
[www.glastender.com](http://www.glastender.com)

Approval/Notes:

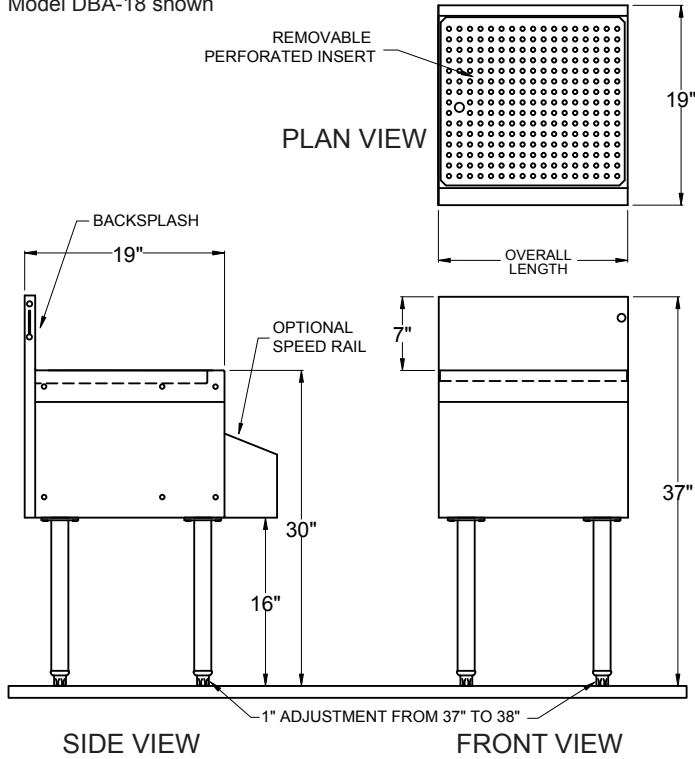
Specifications subject to change without notice. For current specifications please visit our website.

# Drainboards

## Dimensional Information

### "A" Depth-19" Deep Models

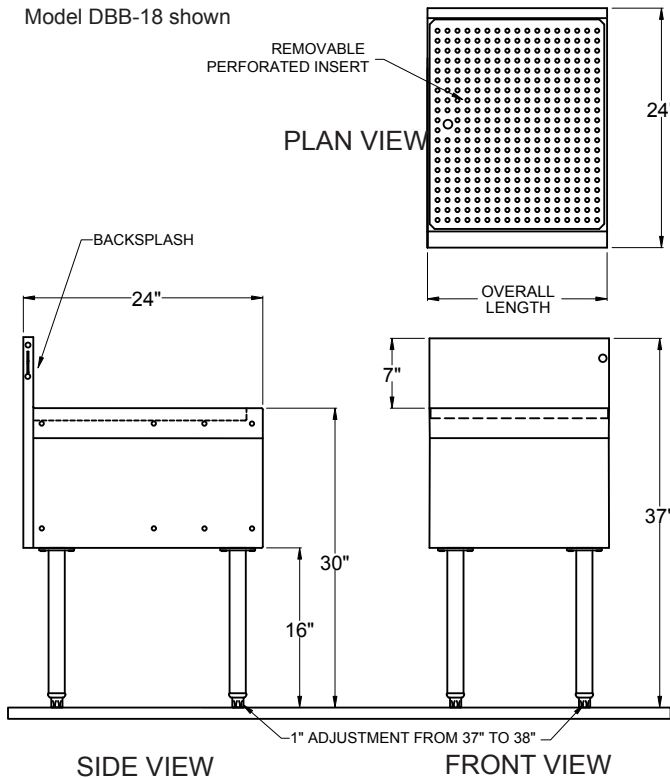
Model DBA-18 shown



Model Number	Overall Length
DBA-12	12"
DBA-18	18"
DBA-24	24"
DBA-30	30"
DBA-36	36"
DBA-42	42"
DBA-48	48"

### "B" Depth-24" Deep Models

Model DBB-18 shown



Model Number	Overall Length
DBB-12	12"
DBB-18	18"
DBB-24	24"
DBB-30	30"
DBB-36	36"
DBB-42	42"
DBB-48	48"