

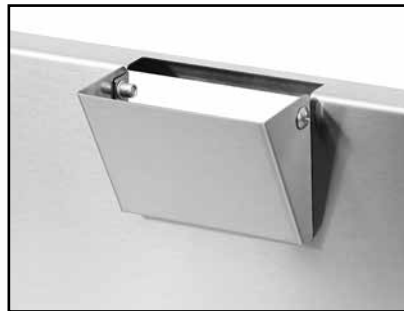
Project: _____	AIA# _____
Item #: _____ Qty: _____	SIS# _____
Model #: _____	

Ice Bins

See reverse side for model number key



IBA-24



TC-BS Accessory

Standard Features

- All stainless steel construction
- One-piece, seamless top and backsplash
- PVC plastic breaker strip around ice bin liner: creates 5/16" raised edge around liner, acts as thermal barrier to prevent heat transfer, and makes the cover slide easier.
- Tubing chase available centered in backsplash of 12" and larger models. Specify accessory model #TC-BS.
- Backsplash mounted, hot and cold water ice-melting faucet available. Specify accessory model # IMF (12" wide and larger models only).
- Available in 6" incremental lengths from 6" to 48"
- 24" deep version provides larger ice bin not just a deck extension on the back of the 19" deep model
- Sliding stainless steel cover
- Eco friendly foamed-in-place insulation has zero impact on global warming or ozone depletion
- Adjustable stainless steel bullet feet
- Ten circuit available with all 24" and wider models (add suffix '-CP10' to model number)



Intertek

4004503
 Conforms to ANSI/NSF STD 2

To view underbar installation instructions, please visit: https://www.glastender.com/PDF/F-750-165_Underbar_Installation_Instructions.pdf
 To view cleaning and care instructions, please visit: https://www.glastender.com/PDF/F-423-011_ss_clean_care.pdf

Specifications

Drain

- Non-cold plate model: 1-1/2" tailpiece
- Ten circuit cold plate model '-CP10': 3/4" MPT
- *Tubing Chase in Backsplash (Optional)*
- 2-3/8" by 4" hole centered in backsplash

Cover

- Two-piece sliding cover, 20 gauge stainless steel, included with all models

Cold Plate (Models with '-CP10' suffix)

- Ten circuit available with all 24" and wider models
- Connection is 5/16" O.D. stainless steel tubing with swaged end

Liner Depth

- 10-1/2"

Ice Capacity

- "A" depth = 2.79 lbs X length
- "B" depth = 3.54 lbs X length

Legs

- 1-5/8" diameter 16 gauge stainless steel
- Stainless steel bullet feet

Materials

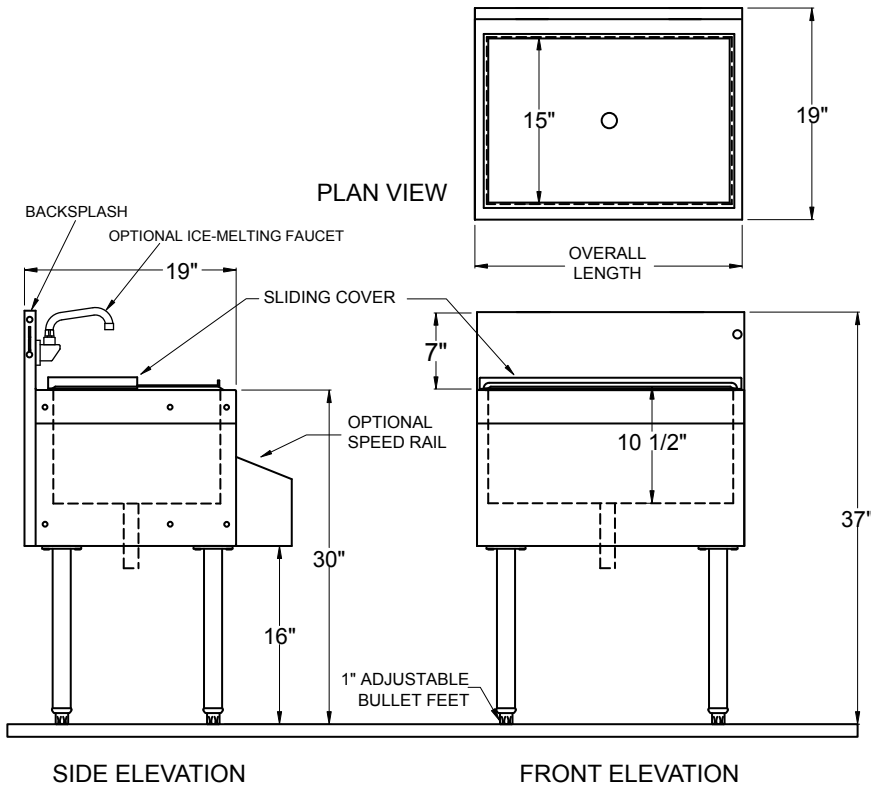
- 20 gauge stainless steel
- PVC plastic breaker strip around opening of ice bin liner

Glastender, Inc. • 5400 North Michigan Road • Saginaw, MI • 48604-9780 989.752.4275 • 800.748.0423 • Fax 989.752.4444 www.glastender.com	Approval/Notes:
Specifications subject to change without notice. For current specifications please visit our website.	

Ice Bins

Dimensional Information

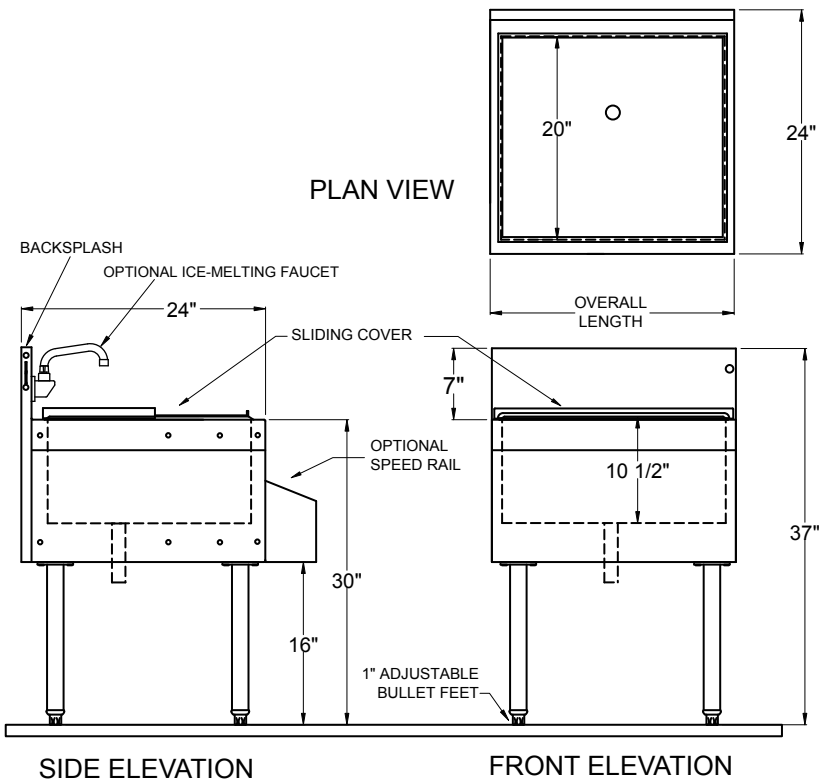
"A" Depth-19" Deep Models



Models Without Cold Plate	Overall Length
IBA-6*	6"
IBA-12	12"
IBA-18	18"
IBA-24	24"
IBA-30	30"
IBA-36	36"
IBA-42	42"
IBA-48	48"
Models With Cold Plate	Overall Length
IBA-24-CP10	24"
IBA-30-CP10	30"
IBA-36-CP10	36"
IBA-42-CP10	42"
IBA-48-CP10	48"

* Note: 6" unit cannot be free standing

"B" Depth-24" Deep Models



Models Without Cold Plate	Overall Length
IBB-6*	6"
IBB-12	12"
IBB-18	18"
IBB-24	24"
IBB-30	30"
IBB-36	36"
IBB-42	42"
IBB-48	48"
Models With Cold Plate	Overall Length
IBB-24-CP10	24"
IBB-30-CP10	30"
IBB-36-CP10	36"
IBB-42-CP10	42"
IBB-48-CP10	48"

* Note: 6" unit cannot be free standing



5400 North Michigan Road • Saginaw, MI • 48604-9780
 989.752.4275 • 800.748.0423 • Fax 989.752.4444
www.glastender.com

Printed in USA