



GLO-RAY® HEATED SHELVES

Models GRS-18, -24, -30, -36, -42, -48, -54, -60, -66, -72

The Hatco Glo-Ray® Heated Shelf has an extruded aluminum base with non-slip rubber feet, stainless steel top, and blanket-type element for uniform heat distribution. Fiberglass insulation keeps heat at the holding surface while a built-in adjustable thermostat controls surface temperature.

FLEXIBILITY

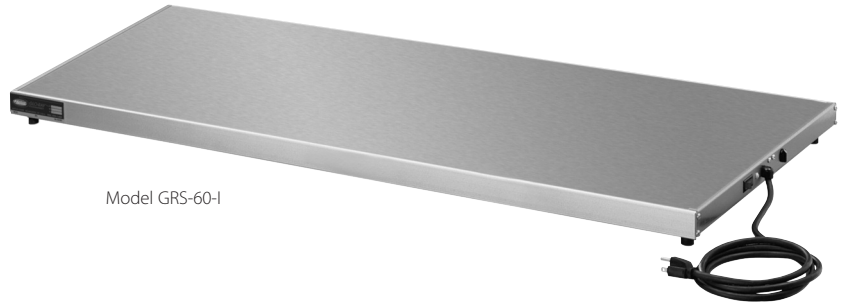
Ideal for pass-through areas, buffet lines, or as a heated work shelf.

Model GRS features a rocker switch with indicator light and an adjustable thermostat ranging from 80° to 200°F (27° to 93°C). Surface-mounted blanket-type elements distribute heat under the entire stainless steel surface. All models are shipped factory assembled and include a 6' (1829 mm) cord and plug attached, ready to use.

QUALITY

The following features assure the finest performance for years to come:

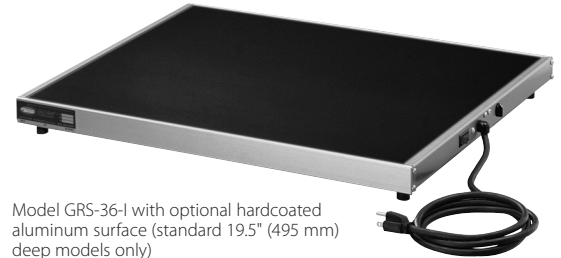
- Models feature a thermostatically-controlled heated base to extend the holding times of most food.
- Available in widths from 18" to 72" (457-1829 mm) and depths from 6" to 25.5" (152-648 mm).
- Extruded aluminum base with stainless steel top – optional hardcoated aluminum surface available (standard 19.5" (495 mm) deep models only)
- Optional *Designer* colors: Warm Red, Black, Gray Granite, White Granite, Navy Blue, Hunter Green, Antique Copper



Model GRS-60-I



Model GRS-36-I with accessory pan rail and food pans



Model GRS-36-I with optional hardcoated aluminum surface (standard 19.5" (495 mm) deep models only)



Model GRS-30-I with optional *Designer* color and accessory food pans

BLANKET ELEMENTS GUARANTEED AGAINST BURNOUT AND BREAKAGE FOR ONE YEAR.



HATCO CORPORATION P.O. Box 340500 Milwaukee, WI 53234-0500 U.S.A.
 (800) 558-0607 • (414) 671-6350 • Fax (800) 543-7521 • Int'l. Fax (414) 671-3976
 www.hatcocorp.com • E-mail: equipsales@hatcocorp.com

Form No. GRS Spec Sheet

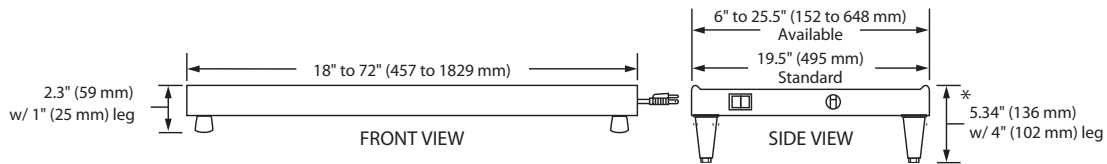
Printed in U.S.A.
 August 2010

A City Discount



GLO-RAY® HEATED SHELVES

Models GRS-18, -24, -30, -36, -42, -48, -54, -60, -66, -72



SPECIFICATIONS FOR STANDARD 19.5 (495 mm) DEPTH

Model	Watts	Width	Shipping Weight
GRS-18-I	272	18" (457 mm)	16 lbs. (7 kg)
GRS-24-I	380	24" (610 mm)	20 lbs. (9 kg)
GRS-30-I*	490	30" (762 mm)	25 lbs. (11 kg)
GRS-36-I	598	36" (914 mm)	28 lbs. (13 kg)
GRS-42-I†	652	42" (1067 mm)	32 lbs. (15 kg)
GRS-48-I†	760	48" (1219 mm)	36 lbs. (16 kg)
GRS-54-I†	870	54" (1372 mm)	42 lbs. (19 kg)
GRS-60-I†	980	60" (1524 mm)	44 lbs. (20 kg)
GRS-66-I†	1088	66" (1676 mm)	50 lbs. (23 kg)
GRS-72-I†	1196	72" (1829 mm)	56 lbs. (25 kg)

* Indicates models that accommodate multiple food pans: 30" (762 mm) = 2 pans, 42" (1067 mm) = 3 pans, 54" (1372 mm) = 4 pans, and 66" (1676 mm) = 5 pans.

† NSF requires units over 36" (914 mm) in width or weighing more than 80 lbs. (36 kg) to be either sealed, or raised on the installation surface with the 4" (102 mm) legs included.

DIMENSIONS

GRS (Standard Depth): Model shown is 18"-72"W x 19.5"D x 2.3"H* (457-1829 x 495 x 59 mm).

*Add 3" (76 mm) to height when using 4" (102 mm) legs.

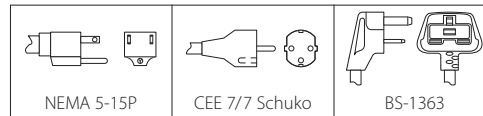
VOLTAGE

120 volts, single phase only, (uses NEMA 5-15P).
Export voltages available.

CORD LOCATION

Center of side with switch.

PLUG CONFIGURATIONS



GRS Models are available in depths of:

Model	Depths	Model	Depths
A	6" (152 mm)	G	15.75" (400 mm)
B	7.75" (197 mm)	H	17.5" (445 mm)
C	9.75" (248 mm)	I	19.5" (495 mm)
D	12" (305 mm)	J	21.5" (546 mm)
E	13.75" (349 mm)	K	23.5" (597 mm)
F	15.5" (394 mm)	L	25.5" (648 mm)

WATTS

Model	A (6" Depth)	B (7.75" Depth)	C (9.75" Depth)	D (12" Depth)	E (13.75" Depth)	F (15.5" Depth)	G (15.75" Depth)	H (17.5" Depth)	I (19.5" Depth)	J (21.5" Depth)	K (23.5" Depth)	L (25.5" Depth)
GRS-18-(X)	109	109	136	218	218	218	245	245	272	327	354	381
GRS-24-(X)	136	136	190	272	272	272	326	326	380	408	462	516
GRS-30-(X)	163	163	245	326	326	326	408	408	490	489	571	653
GRS-36-(X)	190	190	299	380	380	380	489	489	598	570	679	788
GRS-42-(X)	245	245	326	490	490	490	571	571	652	735	816	897
GRS-48-(X)	272	272	380	544	544	544	652	652	760	816	924	1032
GRS-54-(X)	299	299	435	598	598	598	734	734	870	897	1033	1169
GRS-60-(X)	326	326	490	652	652	652	816	816	980	978	1142	1306
GRS-66-(X)	353	353	544	706	706	706	897	897	1088	1059	1250	1441
GRS-72-(X)	380	380	598	760	760	760	978	978	1196	1140	1358	1576

OPTIONS (NOT FOR RETROFIT)

- Designer Colors: Warm Red, Black, Gray Granite, White Granite, Navy Blue, Hunter Green, and Antique Copper
- Hardcoated Surface for Standard Depth 19.5" (495 mm) Models

ACCESSORIES

- 4" (102 mm) Adjustable Legs (Standard on units over 36" (914 mm) in width)
- Slant Leg Kit (Models 12" (305 mm) deep or deeper)
- Pan Rail (19.5" (495 mm) deep models only)

PRODUCT SPECS

Heated Shelf

The Heated Shelf shall be a Glo-Ray® Model ... as manufactured by the Hatco Corporation, Milwaukee, WI 53234 U.S.A.

With 24/7 parts and service assistance (U.S. and Canada only), the Shelf shall be rated at ... watts, ... volts, and be ... inches (millimeters) in overall

width. It shall consist of a thermostatically-controlled heated base and a cord with plug attached.

Accessories shall include 4" (102 mm) adjustable legs, slant leg kit, and pan rail.

HATCO CORPORATION P.O. Box 340500 Milwaukee, WI 53234-0500 U.S.A. • (800) 558-0607 • (414) 671-6350
Fax (800) 543-7521 • Int'l. Fax (414) 671-3976 • www.hatcocorp.com • E-mail: equipsales@hatcocorp.com