

24" Square Molded Melamine Tabletop without umbrella hole



Length: 24"
Width: 24"
Weight: 10.5 lbs

Product Specifications

Product Description	Reference Number	Color	UPC Code 014306	Weight Each (lbs.)	Master Pack	Master Pack Volume (cu. ft)
24" Square Molded Melamine Tabletop without hole	UT210004	White	935799	11.00	1	0.51
	UT210025	Granite Green	935768	11.00	1	0.51
	UT210781	Tokyo Stone	935782	11.00	1	0.51
	UT210742	Aged Oak	935737	11.00	1	0.51
	UT210008	Teak Decor	935775	11.00	1	0.51
	UT210780	Barn White	935744	11.00	1	0.51
	UT210782	White Oak	935805	11.00	1	0.51
	UT211038	Granite	939247	11.00	1	0.51
	UT210815	Almeria	940083	11.00	1	0.51
	UT210816	Arizona	940182	11.00	1	0.51

Features & Benefits

Warranty: 2 Yrs.

- Trendy marble, granite finish, or deco tops to complement all Grosfillex chairs.
- Hard, smooth molded tabletop made of a molded wood/resin body with a fusion bonded melamine top.
- Stain, burn, scratch, and fade resistant.
- Use Grosfillex's wide 4-prong central resin pedestal base 1000, tilt top aluminum base 100, or aluminum central pedestal base, or bar height table base with anti-skid glides for stability. Compatible with X-one base.
- Cleans easily with soap and water.
- Specifically designed and engineered for indoor/outdoor terraces, bars, breakfast areas, concessions, and balconies.
- Customize designs by mixing and matching tabletops and bases.
- Top and Base sold separately.

The shape of the table top may bend to a concave shape when exposed to direct sunlight. A deflection of as much as 3/16" per linear foot of table length can be expected. This is not a manufacturing defect as this deformation will not affect the structural integrity of the table nor its functionality.



White



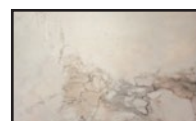
Granite Green



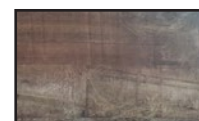
Tokyo Stone



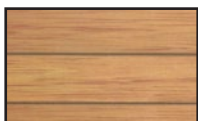
Aged Oak



Almeria



Arizona



Teak Decor



Barn White



White Oak



Granite



No Spare Parts