



# BEVERAGE-AIR

3779 Champion Blvd., Winston-Salem, NC 27105  
1-888-845-9800 Fax# 1-336-245-6453  
<http://www.Beverage-Air.com>

## Commercial Refrigeration Equipment General Specification

### 18 Month Parts/Labor Warranty—5 Year Compressor

#### CABINET CONSTRUCTION

- Exterior—Stainless steel interior and exterior standard.
- Insulation—foamed-in-place CFC and HCFC-free polyurethane insulation.
- One-piece grille allows easy removal/installation for preventative maintenance.

#### ELECTRONIC CONTROL

- Electronic thermostat with manual defrost button provides a digital display of cabinet temperatures, which includes status indicators and key pad for any necessary temperature adjustments.

#### REFRIGERATION SYSTEM

- Bottom mount balanced refrigeration system for better ergonomics.
- Automatic condensate evaporation system for energy efficiency.
- Forced-air system ensures uniform distribution of airflow throughout the entire cabinet to ensure even product temperatures. Solid door models are designed to maintain 0°F at 100°F ambient according to NSF7; Glass door models are designed for -10°F at 86°F ambient and -15°F at 75°F ambient.
- Self-contained refrigeration system uses environmentally friendly (CFC and HCFC-free) R404A refrigerant.
- Defrost system is automatic, time-initiated and temperature terminated operation.

#### DOORS

- Choose from full solid door or full glass door configuration.
- **Glass door units only:** Highly efficient triple pane glass. Glass is heated to prevent any condensation formation. Inside and outside panes are tempered for added safety.
- Anti-microbial door handles and door locks are standard.
- Spring-loaded hinges standard. Positive seal self-closing door(s) with 120° stay open feature.
- Plug-in magnetic door gaskets of one piece construction, removable without tools for ease of cleaning.

#### SHELVING

- Three (3) heavy duty epoxy coated wire shelves per section standard. Four (4) shelf clips included per shelf (field installed).
- Shelves are adjustable in 1/2" increments.

#### MODEL FEATURES

- Incandescent interior lighting—*solid door units*. Fluorescent interior lighting—*glass door units*.
- LED lighting option—*glass door units only*.
- 6" heavy-duty casters included, two with brakes standard. 3" casters or 6" legs optional.
- Pre-wired plug for 115/60/1 phase.  
**HBF72-5-G powered by 115/208-230 volts is designed for field wiring (requires 4-wire electrical circuit, hard-wired).**
- Epoxy coated evaporator prevents corrosion.
- ENERGY STAR® Qualified
- UL-EPH and CUL for open food product.

Item No. \_\_\_\_\_  
Quantity \_\_\_\_\_

## BOTTOM MOUNTED REACH-IN FREEZERS

Horizon Series  
Solid Doors and Glass Doors

MODEL:  
HBF23-1 / HBF23-1-G  
HBF27-1 / HBF27-1-G  
HBF49-1 / HBF49-1-G  
HBF72-1 / HBF72-5-G



**HBF23-1**  
(SHOWN WITH FULL SOLID DOOR)  
Full Glass Door model available



**HBF27-1**  
(SHOWN WITH FULL SOLID DOOR)  
Full Glass Door model available



**HBF49-1**  
(SHOWN WITH FULL SOLID DOOR)  
Full Glass Door model available

Available From:



\*Note: Not all markings may apply to all model variations.

|                              |                       |
|------------------------------|-----------------------|
| <b>Model Specified</b> _____ | <b>Store#</b> _____   |
| <b>Location</b> _____        | <b>Quantity</b> _____ |

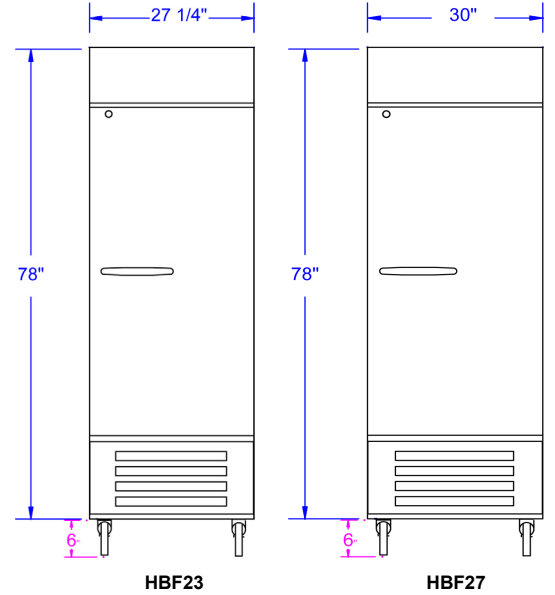


**BEVERAGE-AIR**

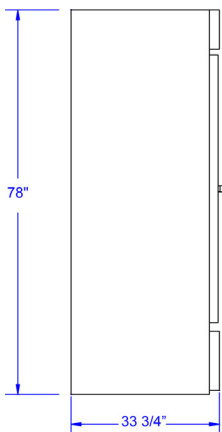
**Horizon Bottom Mount Freezers**  
**Models: HBF23, HBF27, HBF49, HBF72**

| MODEL   | HBF23           | HBF27           | HBF49           | HBF72           | HBF72<br>GLASS DOOR |
|---|-----------------|-----------------|-----------------|-----------------|---------------------|
| <b>EXTERNAL DIMENSIONAL DATA</b>                                    |                 |                 |                 |                 |                     |
| Length Overall (inches)<br>Length Overall (mm)                      | 27 1/4"<br>692  | 30"<br>762      | 52"<br>1321     | 75"<br>1905     | 75"<br>1905         |
| Depth Overall (inches) / (mm)<br><i>Add 1 3/4" for handle</i>       | 33 3/4" / 857   | 33 3/4" / 857   | 33 3/4" / 857   | 33 3/4" / 857   | 33 3/4" / 857       |
| Height Overall—(inches) / (mm)<br><i>Add 6" for legs or casters</i> | 78" / 1981      | 78" / 1981      | 78" / 1981      | 78" / 1981      | 78" / 1981          |
| Number of doors   | 1               | 1               | 2               | 3               | 3                   |
| Depth with Door Open 90 °   | 60"             | 60"             | 60"             | 60"             | 60"                 |
| <b>INTERNAL DIMENSIONAL DATA</b>                                    |                 |                 |                 |                 |                     |
| NET Capacity (cubic ft.)<br>NET Capacity (Liters)                   | 23<br>651       | 27<br>765       | 49<br>1388      | 72<br>2039      | 72<br>2039          |
| Internal Length Overall (inches)<br>Internal Length Overall (mm)    | 24"<br>610      | 27"<br>686      | 49"<br>1245     | 72"<br>1829     | 72"<br>1829         |
| Internal Depth Overall (inches)<br>Internal Depth Overall (mm)      | 28 1/2"<br>724  | 28 1/2"<br>724  | 28 1/2"<br>724  | 28 1/2"<br>724  | 28 1/2"<br>724      |
| Internal Height Overall—(inches)<br>Internal Height Overall—(mm)    | 61 3/4"<br>1569 | 61 3/4"<br>1569 | 61 3/4"<br>1569 | 61 3/4"<br>1569 | 61 3/4"<br>1569     |
| Number of shelves   | 3               | 3               | 6               | 9               | 9                   |
| <b>ELECTRICAL DATA</b>  |                 |                 |                 |                 |                     |
| Full Load Amperes 115/60/1  | 10.9 A          | 11.9 A          | 11.9 A          | 11.9 A          | 15 A / 208-230v*    |
| <b>REFRIGERATION DATA</b>   |                 |                 |                 |                 |                     |
| Horsepower  | 1/2             | 3/4             | 3/4             | 3/4             | 2 @ 1/2             |
| <b>WEIGHT DATA</b>  |                 |                 |                 |                 |                     |
| Gross Weight (Crated lbs) Solid / Glass                             | 300 / 325       | 373 / 400       | 530 / 560       | 715             | 775                 |
| Gross Weight (Crated kg) Solid / Glass                              | 136 / 147       | 169 / 181       | 240 / 254       | 324             | 352                 |

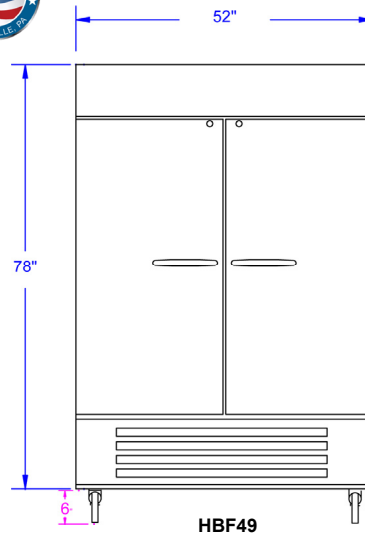
**PLAN VIEWS**



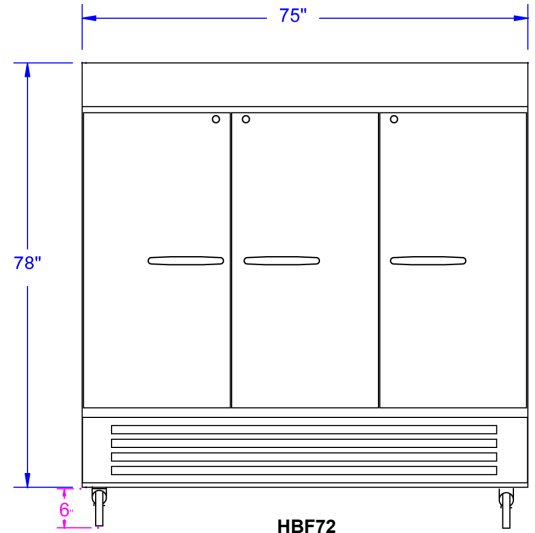
**Note:** Not all markings may apply to all model variations.  
**\*Note:** Freezers powered by 115/208-230 volts are designed for field wiring (requires 4-wire electrical circuit, hard-wired).



**COMMON END**



**HBF49**



**HBF72**

**BEVERAGE-AIR® CORPORATION**

3779 Champion Blvd. • Winston-Salem, NC 27105 USA • (336) 245-6400 • Fax (336) 245-6453 • (888) 845-9800 • www.beverage-air.com

Specifications are subject to change without prior notice. 10/11