



Profit from the Eagle Advantage®

Specification Sheet

Short Form Specifications

Eagle Hand Sink, model HSA-10-FW. Constructed of all-welded type 304 stainless steel, with deep-drawn positive drain sink bowl, basket drain, inverted "V" edge to prevent spillage, and splash-mounted gooseneck faucet with wrist handles.



#HSA-10-FW

Options / Accessories

- P-trap
- Tail piece
- End splashes*
- Side mount wall bracket
- Soap & towel dispenser
- MICROGARD® antimicrobial protection

* To order end splashes, add suffix "-LS" for left end splash, "-RS" for right end splash, or "-LRS" for left and right end splashes.

EAGLE GROUP
100 Industrial Boulevard, Clayton, DE 19938-8903 USA
Phone: 302-653-3000 • Fax: 302-653-2065
www.eaglegrp.com

Foodservice Division: Phone 800-441-8440
MHC/Retail Display Divisions: Phone 800-637-5100

For custom configuration or fabrication needs, contact our **SpecFAB® Division**.
Phone: 302-653-3000 • Fax: 302-653-3091 • e-mail: specfab@eaglegrp.com

Item No.:	_____
Project No.:	_____
S.I.S. No.:	_____

Hand Sink* with Standard Wrist Handle Faucet

MODELS:

- HSA-10-FW

Design & Construction Features

- Type 304 stainless steel construction.
- Inverted "V" edge rim retards spillage.
- All-welded construction.
- Positive drain bowl.
- Wall bracket included for added strength.
- One piece, deep-drawn, seamless bowl.
- 1½" (38mm) stainless steel basket waste,
- Gooseneck faucet with wrist blade handles.

* Non-electric. We offer sinks with electric soap dispenser and faucets.



Spec sheets available for viewing, printing or downloading from our online literature library at www.eaglegrp.com

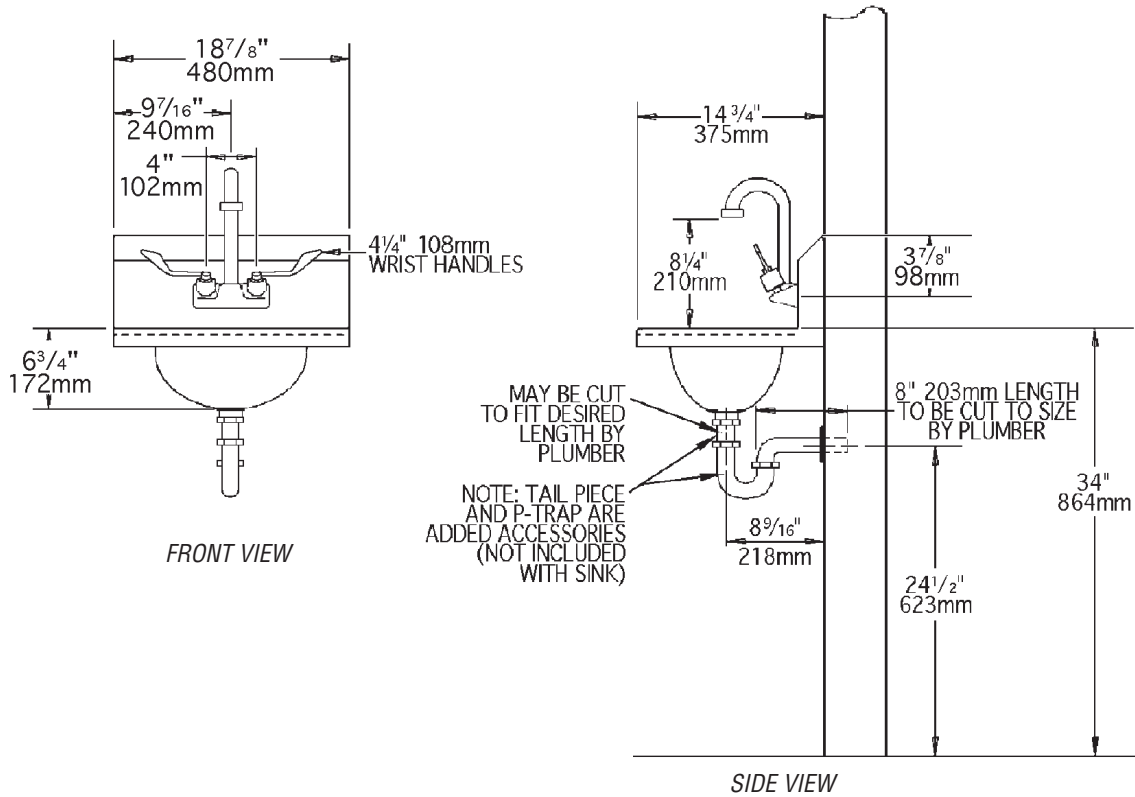
Eagle Foodservice Equipment, Eagle MHC, SpecFAB®, and Retail Display are divisions of Eagle Group. ©2009 by the Eagle Group

A City Discount



Item No.: _____
 Project No.: _____
 S.I.S. No.: _____

Hand Sink with Standard Wrist Handle Faucet



model #	bowl size		overall size		weight	
	width in.	length x depth mm	width in.	length x height mm	lbs.	kg
HSA-10-FW	9 ³ / ₄ "	13 ¹ / ₂ " x 6 ³ / ₄ "	343 x 248 x 173	14 ³ / ₄ " x 18 ⁷ / ₈ " x 12 ³ / ₄ "	376 x 480 x 324	14 6.4

EAGLE GROUP
 100 Industrial Boulevard, Clayton, DE 19938-8903 USA
 Phone: 302-653-3000 • Fax: 302-653-2065
 www.eaglegrp.com

Foodservice Division: Phone 800-441-8440
 MHC/Retail Display Divisions: Phone 800-637-5100

Printed in U.S.A.
 ©2009 by Eagle Group
 Rev. 06/09

Spec sheets available for viewing, printing or downloading from our online literature library at www.eaglegrp.com

Although every attempt has been made to ensure the accuracy of the information provided, we cannot be held responsible for typographical or printing errors. Information and specifications are subject to change without notice. Please confirm at time of order.