

# DishStar® HT-E-SEER

Project \_\_\_\_\_  
 Item \_\_\_\_\_  
 Quantity \_\_\_\_\_  
 CSI Section 11400 \_\_\_\_\_  
 Approval \_\_\_\_\_  
 Date \_\_\_\_\_

DishStar® HT-E-SEER

## Models

DishStar HT-E-SEER



### Standard Features

- Steam Elimination
- Energy Recovery System collects the hot water vapor inside the machine and uses it to preheat the incoming rinse water
- Operates on a single cold water connection
- Automatic fill
- Push button start
- Door interlock
- Pressure regulator
- Built-in booster heater with Sani-Sure™ final rinse system
- Labyrinth type door design
- Automatic pumped drain for floor and wall drain installations
- Stainless steel wash pump
- Universal timer
- Digital LED control panel
- Delime cycle
- Simplified controls allow easy access for operation and service
- Door switch
- One (1) each peg and combination rack included
- Built-in chemical pumps and priming switches

### Mandatory Specs

Specify voltage \_\_\_\_\_

### Options

- Water Hammer Arrestor
- Drain Water Tempering Kit
- Scale Prevention System (SPS)
- Replacement Cartridge for SPS
- Tie Down

### Accessories

- 36-Compartment Rack
  - 4-1/8" tall (105 mm)
  - 5-5/8" tall (143 mm)
  - 7" tall (178 mm)
- Combination Rack
- Peg Rack
- Machine Stand
  - 6" (152 mm) high
  - 18" (457 mm) high

## Specifications

High temperature undercounter dishwasher with steam elimination and energy recovery  
 Operates on a single cold water connection  
 Uses 0.65 gallons (2.47 liters) of water per rack  
 Uses 13.0 gallons (49.21 liters) of water per hour  
 Cleans 20 racks per hour  
 Three selectable cycles:  
 Normal - 145 seconds  
 Heavy - 213 seconds  
 Extra-Heavy - 313 seconds  
 Powerful 1 hp wash pump motor  
 Air insulated between body and stainless steel housing  
 Durable stainless steel construction

*NOTE: A vent hood is not recommended above the Jackson DishStar HT-E-SEER as it does not produce excessive vapors. Always check with the local building code to know what type of ventilation is required for commercial dishmachine installations in your area.*

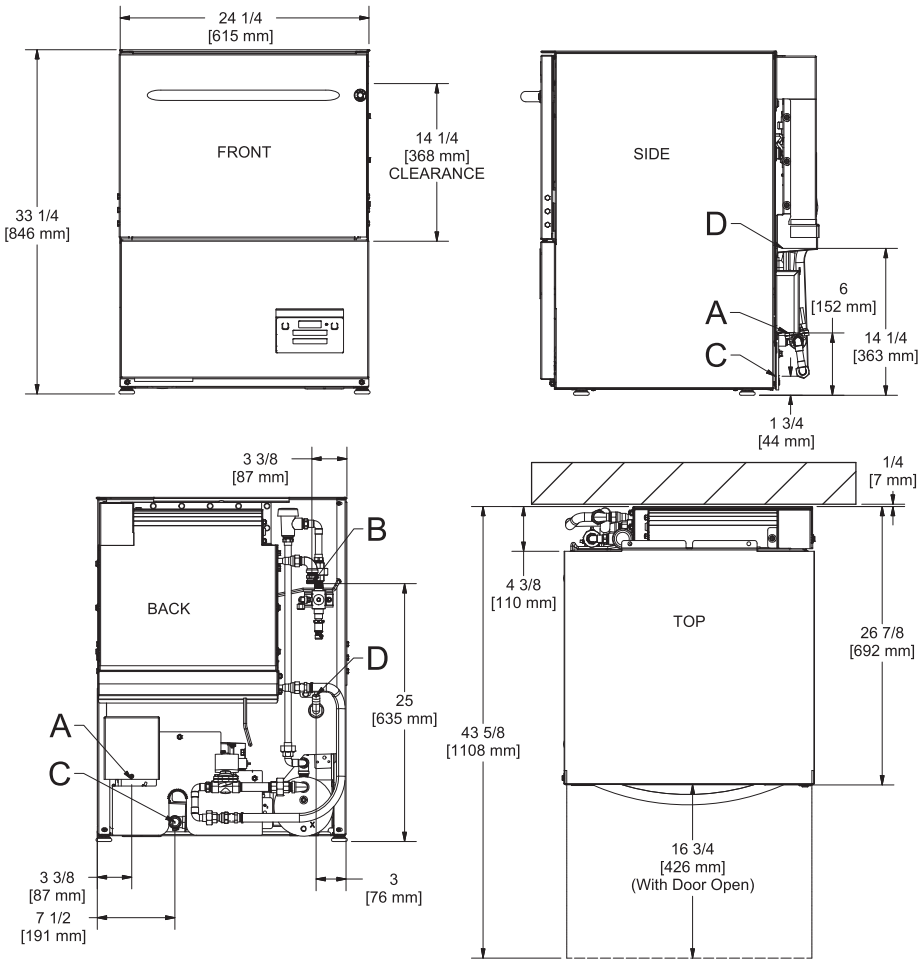


Intertek



Intertek





**LEGEND**

- A - Electrical Connection
- B - Water Inlet (with 6' Hose)  
(3/4" Male GHT, connect to true 1/2" ID line, 40-90 °F)
- C - Drain Connection  
(1" ID, 1 3/8" OD)
- D - Chemical Port

All dimensions from the floor can be increased 1" using the machine's adjustable feet.

MODEL NO.	MACHINE DIMENSIONS				WALL CLEARANCE	SHIPPING INFORMATION					
	INSIDE CLEARANCE HEIGHT	INSIDE CLEARANCE WIDTH	INSIDE CLEARANCE DEPTH	DOOR OPEN DEPTH		WEIGHT	CLASS	CUBE	HEIGHT	WIDTH	DEPTH
DishStar HT-E-SEER	14-1/4" (368 mm)	20" (508 mm)	20" (508 mm)	42" (1067 mm)	1/4" (6 mm)	255 lbs (116 kg)	85	20.09 cu. ft.	43.5" (1105 mm)	28" (712 mm)	28.5" (724 mm)

APPROXIMATE TOTAL AMP LOADS	
208/60/1	24.7
230/60/1	26.7
460/60/3	7.7

OPERATING CAPACITY	
Racks per Hour	20
Dishes per Hour	500
Glasses per Hour	720

WASH PUMP MOTOR	
Wash Pump	1 hp (208/230v)/ 3/4 hp (460v)

OPERATING CYCLE (seconds)	Wash	Rinse	Dwell	Vent	Total Cycle
Cycle I (Normal)	80	09	11	45	145
Cycle II (Heavy)	148	09	11	45	213
Cycle III (Extra Heavy)	248	09	11	45	313

WATER REQUIREMENTS	
Incoming Water Temperature	40-90° F (4.4-32.2° C)
Gallons per Rack	0.65 gal (2.47 L)
Gallons per Hour	13 gal (49.21 L)
Flow Pressure (PSI)	10
Waterline Size (NPT)	3/4" Male GHT (connect to true 1/2" ID Line)
Drainline Size (OD)	1-3/8"

OPERATING TEMPERATURES	
Wash	155° F (68.3° C)
Rinse	180° F (82.2° C)

HOW TO SPECIFY: DishStar HT-E-SEER

**Jackson WWS, Inc.**  
 Shipping Address: 6209 North U.S. Highway 25E, Gray, KY 40734  
 Mailing Address: P.O. Box 1060, Barbourville, KY 40906  
 Telephone: 888-800-5672 • Fax: 606-523-1799  
 Email: info@jacksonwws.com  
 07610-004-54-39 [05/02/18]

[www.jacksonwws.com](http://www.jacksonwws.com)

We reserve the right to change specifications in this bulletin without incurring any obligation for equipment previously or subsequently sold.