

*New*

## HEAT-WAVE™ CLASSIC STRIP HEATERS, SINGLE MODELS

- **Low Wattage** □ **Medium Wattage** □ **High Wattage**
- **Without Lights** □ **With Lights**

### Features/Benefits:

- ★ Star single model strip heaters safely keep foods at optimum serving temperatures.
- ★ Distributed wattage heating elements reduces “cold zones” towards ends of heat strips. 20% more heat toward the ends.
- ★ Available in widths 18” to 72”.
- ★ Sturdy extruded aluminum housing eliminates sagging.
- ★ Efficiently directed heat.
- ★ Insulated housing minimizes heat loss.
- ★ Element guards provide operator safety.
- ★ Easy to install and models come standard with sturdy adjustable angle brackets.

### OPTIONS

#### Power Supply:

##### Standard

- 120V
- 3’ Conduit with power supply leads

##### Optional

- Power cord with attachment plug, 120V models without lights only up to 72”
- 208V Models
- 240V Models

#### Controls:

##### Standard

- On/Off toggle switch

##### Optional

- Infinite Control
- Attached control enclosure
- Remote control enclosure

### ACCESSORIES

#### Sneeze guards:

- 9-3/8” sneeze guard, one side
- 9-3/8” sneeze guard, two sides
- 14” sneeze guard, one side
- 14” sneeze guard, two sides

### Quality Construction:

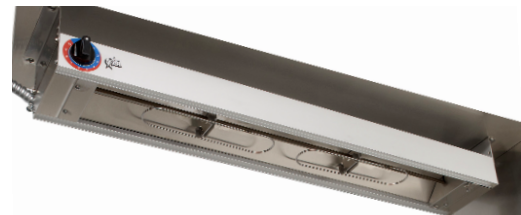
Aluminum outer housing and stainless steel interior construction resists corrosion and is easy to clean. Metal-sheathed heating elements.

### Warranty:

Star Strip Heaters are covered by Star’s one year parts and labor warranty.



**Model SC36HL-1**



**Model SC36HI-1**

### MOUNTING OPTIONS

#### Standard

- Adjustable angle brackets

#### Optional

- 10” high non-adjustable tubular stand mounts
- 12” high non-adjustable tubular stand mounts
- 14” high non-adjustable tubular stand mounts
- 16” high non-adjustable tubular stand mounts
- 10” – 14” adjustable tubular stand mounts

#### *C-leg stand mounts for up to 60” wide models with cord and attachment plug only:*

- 10” high for low wattage models
- 13-1/2” high for high wattage models

#### *T-leg stand mounts for up to 72” wide models with cord and attachment plug only:*

- 10” high for low wattage models
- 13-1/2” high for medium wattage models
- 16” high for high wattage models
- 18” high for high wattage models
- Chain suspension mounts for up to 72” wide models with cord and attachment plug only





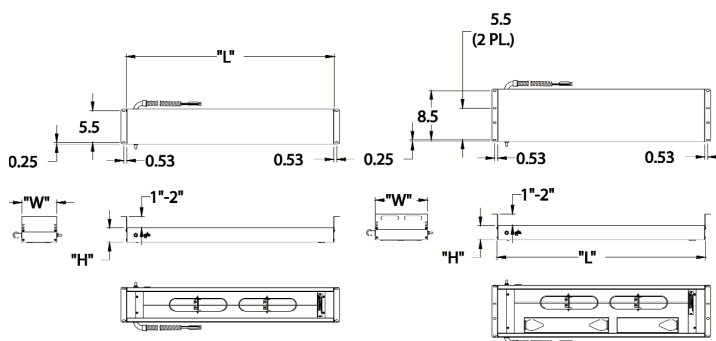
*New*

### HEAT-WAVE™ CLASSIC STRIP HEATERS, SINGLE MODELS

- Low Wattage □ Medium Wattage □ High Wattage
- Without Lights □ With Lights



MOUNTING HEIGHT FROM NON-COMBUSTIBLE SURFACE



SINGLE CLASSIC  
36" MODEL SHOWN

SINGLE CLASSIC  
WITH LIGHTS  
36" MODEL SHOWN

**Overall Dimensions:**

Model	Length	Height	Width	Width
Width	"L"	"H"	Models W/O Lights	Models With Lights
18"	18 in. (45.7 cm)	2.5 in. (5.1 cm)	6 in. (15.2 cm)	9 in. (22.9 cm)
24"	24 in. (61.0 cm)	2.5 in. (5.1 cm)	6 in. (15.2 cm)	9 in. (22.9 cm)
30"	30 in. (76.2 cm)	2.5 in. (5.1 cm)	6 in. (15.2 cm)	9 in. (22.9 cm)
36"	36 in. (91.4 cm)	2.5 in. (5.1 cm)	6 in. (15.2 cm)	9 in. (22.9 cm)
42"	42 in. (106.7 cm)	2.5 in. (5.1 cm)	6 in. (15.2 cm)	9 in. (22.9 cm)
48"	48 in. (121.9 cm)	2.5 in. (5.1 cm)	6 in. (15.2 cm)	9 in. (22.9 cm)
60"	60 in. (152.4 cm)	2.5 in. (5.1 cm)	6 in. (15.2 cm)	9 in. (22.9 cm)
72"	72 in. (182.9 cm)	2.5 in. (5.1 cm)	6 in. (15.2 cm)	9 in. (22.9 cm)

**MODEL NUMBER CROSS REFERENCE**

SC [A] [B] [C] [D] [E] [F]

A- LENGTH

B- POWER: (NONE)-LOW, (M)-MEDIUM, (H)-HIGH

C- LIGHTS (L)

D- TOGGLE: (NONE) OR INFINITE (I), CONTROL BOX: (A) ATTACHED, (R) REMOTE

E- ATTACHED CORD & PLUG (P)

F- VOLTAGE: (1) 120V - USA & CANADA, (2) 120V - USA ONLY, (3) 208V, (4) 240V

**EXAMPLE: SC24MIP-1**

Size (Length)	Single Watts	Single Lighted Watts
18"	275	395
24"	375	495
30"	475	595
36"	600	780
42"	700	880
48"	825	1065
60"	1075	1375
72"	1300	1660

Size (Length)	Single Watts	Single Lighted Watts
18"	375	495
24"	525	645
30"	685	805
36"	825	1005
42"	925	1155
48"	1125	1365
60"	1425	1725
72"	1750	2110

Size (Length)	Single Watts	Single Lighted Watts
18"	475	595
24"	675	795
30"	850	970
36"	1025	1205
42"	1200	1380
48"	1325	1565
60"	1725	2025
72"	2100	2460

**Notes:**

Length does not include mounting brackets or other mounting options.

Lights are 60 watt, 120V

Due to periodic changes in designs, methods, procedures, policies and regulations, the specifications contained in this sheet are subject to change without notice. While Star Manufacturing exercises good faith efforts to provide information that is accurate, we are not responsible for errors or omissions in information provided or conclusions reached as a result of using the specifications. By using the information provided, the user assumes all risks in connection with such use.

Star Manufacturing - 10 Sunnen Drive - P.O. Box 430129 - St. Louis, MO 63143-3800

Phone: (314) 678-6303 - FAX: (314) 781-5445 - www.star-mfg.com