

## "BAK" WOOD TOP UTILITY TABLES

*1 3/4" Thick Top w/4" Coved Riser On Back & Sides*

### FEATURES:

- 1-3/4" Thick Northern Hard Rock Maple Top
- Top Is Finished With Penetrating Oil With Optional Natural Clear Varnique Finish
- Stainless Steel Base, Undershelf, & Bun Pan Rack
- Type 300 Stainless Steel, With #4 Polish, Satin Finish
- Stainless Steel Bun Pan Rack Holds (8) 18"x26" Pans
- Undershelf Is Secured In A Fixed Position, 12" Above Floor
- 5" Heavy Duty Locking Casters
- Shipped Knocked-Down, Easy-To-Assemble
- Note: Drawers Available Only On BAK02, BAK03 & BAK05

### SPECIFICATIONS:

- Top: 1-3/4" Thick Hard Rock Maple Finished With Penetrating Oil
- Shelf: 18GA Type 300 Stainless Steel w/#4 Polish, Satin Finish
- Rack: 18GA Type 300 Stainless Steel w/#4 Polish, Satin Finish
- Legs: 1-5/8" Round O.D., 16GA Type 300 Tubular Stainless Steel w/#4 Polish, Satin Finish
- Gussets: Stainless Steel
- Casters: 5" Locking Casters (Non Marking)

### CERTIFICATIONS:



### ACCESSORIES

#### DESCRIPTION

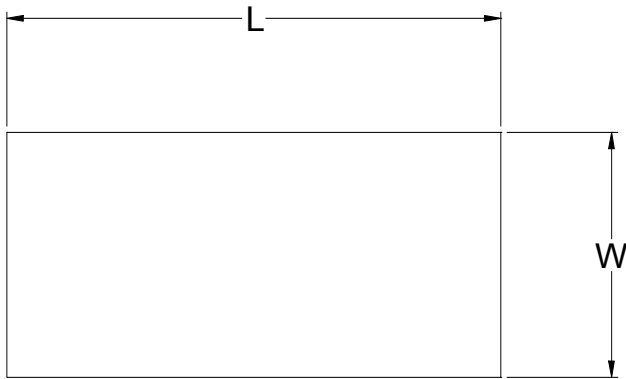
- Stainless Steel Feet
- Drawer
- Drawer Lock
- Overshelves
- Pot Rack

### "BAK" WOOD TOP UTILITY TABLES

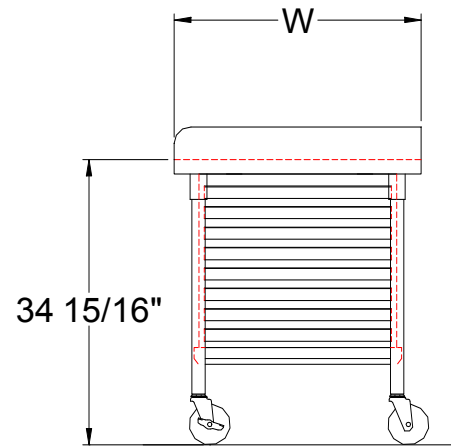
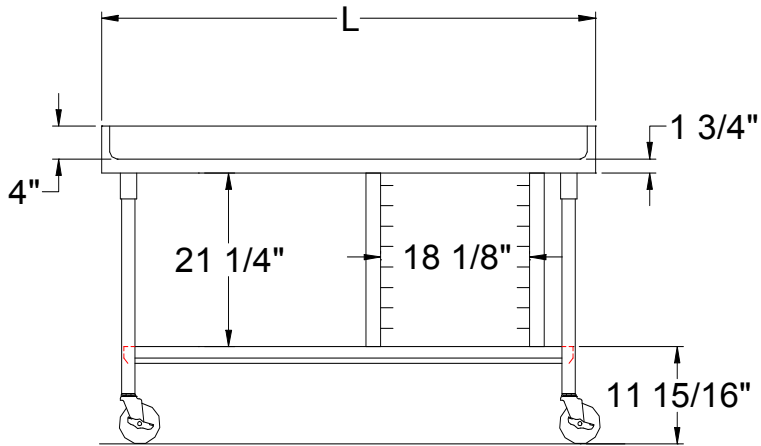
LENGTH	30" WIDE	WT (LBS)	36" WIDE	WT (LBS)
48"	BAK01	175	BAK04	194
60"	BAK02	202	BAK05	224
72"	BAK03	230	-	-

ALL DIMENSIONS ARE TYPICAL. TOLERANCE +/- .500". JOHN BOOS & CO. RESERVES THE RIGHT TO CHANGE SPECIFICATIONS WITHOUT NOTICE.

# DETAILED SPECIFICATIONS



Units 7 Ft. & Larger Are  
Furnished With Six Legs  
Shelf Length = Length Minus 4.875"  
Shelf Width = Width Minus 4.25"



## "BAK" WOOD TOP UTILITY TABLES

LENGTH	30" WIDE	WT (LBS)	36" WIDE	WT (LBS)
48"	BAK01	175	BAK04	194
60"	BAK02	202	BAK05	224
72"	BAK03	230	-	-

ALL DIMENSIONS ARE TYPICAL. TOLERANCE +/- .500". JOHN BOOS & CO. RESERVES THE RIGHT TO CHANGE SPECIFICATIONS WITHOUT NOTICE.