



KM-730MAK

MODULAR CRESCENT CUBER

KM|EDGE™



KM-730MAK
04/30/26
Item # 13684K

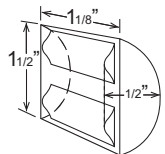
W x D x H
30" x 24" x 26"

KM-730MAK
Air-Cooled shown
on Lancer Dispenser



Air-cooled model shown
on DB-200H Bin

KMEdge™ Cube Dimensions*



* approximate size in inches, image not to scale



Features

- ▶ Individual crescent cube
- ▶ Optimized for use with ice and beverage dispenser
- ▶ Simple one-hour cleaning process
- ▶ Environmentally friendly R290 hydrocarbon refrigerant

- Factory-installed ultrasonic bin control can be adjusted on site
- Durable construction with fewer parts
- Self-diagnostic programming automatically adjusts to changing conditions
- Snap fit parts for easy cleaning
- Stainless steel double-sided evaporator
- CycleSaver™ design
- EverCheck™ alert system
- Removable air filters

Available on Bins:

- B-250SF
- B-700SF
- B-1150SS
- B-1650SS*
- B-500SF
- B-800SF
- B-1300SS
- DB-200H
- BD-500SF
- B-900SF
- B-1500SS**
- DM-200B

Top kit may be required. See Bin Spec Sheets. *Two unit application only.

Warranty:

3 Year Parts & Labor on entire machine. 5 Year Parts & Labor on Evaporator. 5 Year Parts on Compressor; air-cooled condenser coil. Valid in United States, Canada, Puerto Rico and U.S. Territories. Contact factory for warranty in other countries.

Shipping: (LxWxH) 33.75" x 33.25" X 32" Volume: 20.78ft³

Condenser	Model	ICE PRODUCTION		WATER USAGE			ELECTRICAL						
		Air / Water Temp Lbs. per 24 hours 70°/50°F 90°/70°F	90°/70°F	Potable Gal. per 100 lbs. 90°/70°F	Condenser Gal. per 100 lbs. 90°/70°F	kWh Used per 100 lbs. 90°/70°F	Min. Circuit/Max. Fuse Size	Amperage	Voltage	Circuit Wires (including ground)	Heat Rejection BTU/hr.	Refrigerant Charge Amount	Net / Ship Weight (lbs.)
Air	KM-730MAK	756	620	22.0	N/A	4.1	20A	12.3A	115V/60/1	3	9,300	10.6 oz.	180 / 200

Operating Limits

- Ambient Temp Range 45 - 100°F
- Water Temp Range 45 - 90°F
- Water Pressure 10 - 113 PSIG
- Voltage Range 108 - 127V
- If GFCI is required, a GFCI breaker MUST be used in lieu of GFCI receptacle

Service

- Panels easily removed and all components accessible for service.
- Removable/cleanable air filters. (Air-cooled model only)
- Allow 6" (15 cm) clearance at rear, sides, and top for proper air circulation and ease of maintenance/service.

Plumbing

- Icemaker Water Supply Line: Min. 1/4" Nominal ID Copper Water Tubing or Equivalent
- Icemaker Drain Line: Min. 3/4" Nominal ID Hard Pipe or Equivalent
- Water-Cooled Model (Lines Must Be Independent of Icemaker)
- Condenser Water Supply Line: Minimum 1/4" Nominal ID Copper Water Tubing or Equivalent
- Condenser Drain/Return Line: Minimum 1/4" Nominal ID Hard Pipe (open drain system) or Copper Water Tubing (closed loop system) or Equivalent

Accessories

- HS-2148 DB Top Kit
- HS-5562 Remote Monitoring System
- HS-5767 BioSure Clean Ice Ozone System
- HS-5734 Side-Breathing Kit
- H9320-51 Single Water Filter Kit

Hoshizaki reserves the right to change specifications without notice.



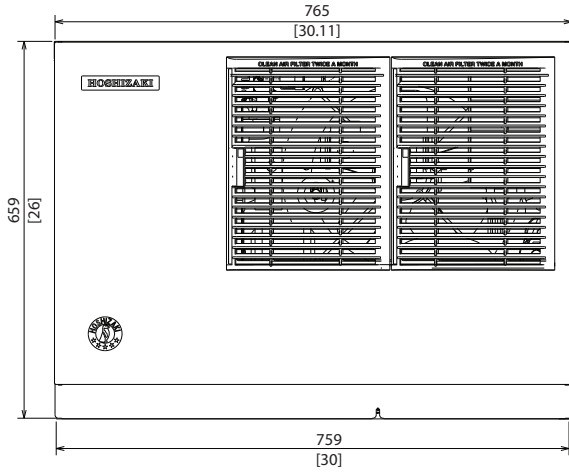
KM-730MAK

MODULAR CRESCENT CUBER

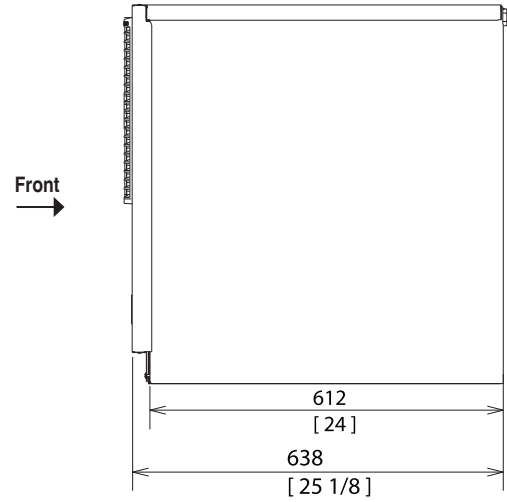
KMD-730MAK
04/30/26
Item # 13684K

mm
inch

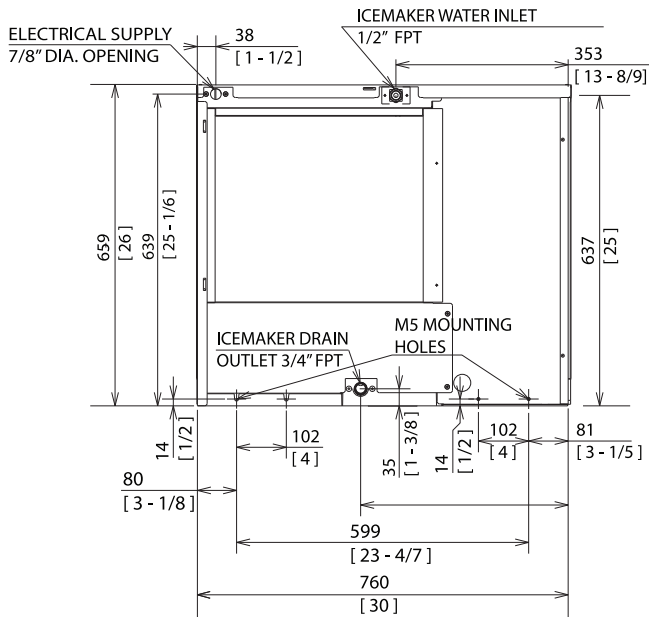
FRONT VIEW



SIDE VIEW



REAR VIEW



BOTTOM VIEW

