



Model: _____ Item #: _____ Date: _____
 Project: _____ Qty: _____ Approved By: _____

Royal Series Three Compartment Bar Sink

Royal Series Underbar



KR19-43L Shown
 Available in 19" or 24" Deep

OPTIONAL ACCESSORIES

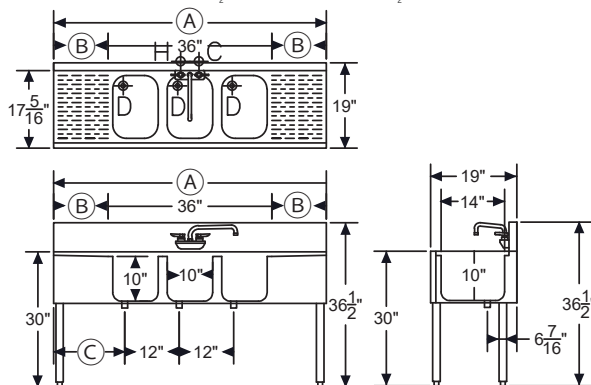
KR-402	Faucet Install Kit
21-443L	3/8" E-Z Install Wall Mount Faucet Water Line Kit
KR-310	Right End Splash
KR-311	Left End Splash
KR-401	Cap Catcher and Opener
KR-501	Towel Ring
30-160	Perforated Dump Basket
KR-806	Upgrade: 6" Longer Stainless Steel Legs
RS-"XX"	Sound Deadened Single Speedrail ("XX" indicates size)
RD-"XX"	Sound Deadened Double Speedrail ("XX" indicates size)

STANDARD FEATURES

Sink Bowl	20 gauge stainless steel. 10" x 14" x 10" deep sink bowl. Furnished with 1-1/2" IPS rear corner drain and 7-1/2" overflow pipe
Drainboard	20 gauge stainless steel reinforced with welded braces every 6"
Front Apron	20 gauge stainless steel clad over 20 gauge galvanized steel
Sides	20 gauge stainless steel
Backsplash	20 gauge stainless steel
Back and Bottom	20 gauge galvanized steel
Legs	1-5/8" tubular 16 gauge stainless steel with grey plastic bullet foot
Plumbing	Hot/Cold Water: 1/2" IPS Drain: 1-1/2" IPS
Faucet	4" OC wall or deck mount faucet with ceramic cartridge valves

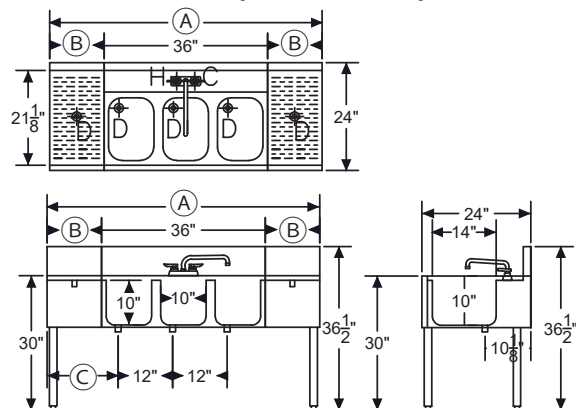
Model Numbers	Overall Length (A)	Drainboard (B)	Left Side to Drain (C)	Bowl Location	Weight (lbs.)
KR19-33C	3'-0"	N/A	4"	Center	85
KR19-43L	4'-0"	12"	4"	Left	105
KR19-43R	4'-0"	12"	15"	Right	105
KR19-53C	5'-0"	12" Each	15"	Center	115
KR19-63C	6'-0"	18" Each	21"	Center	135
KR19-73C	7'-0"	24" Each	27"	Center	150
KR19-83C	8'-0"	30" Each	33"	Center	185

NOTE: Letter at end of Model Number represents Bowl Location
 MECHANICAL REQUIREMENTS: 1/2" IPS Hot and Cold water. 1-1/2" IPS drain connection.



Model Numbers	Overall Length (A)	Drainboard (B)	Left Side to Drain (C)	Bowl Location	Weight (lbs.)
KR24-33C	3'-0"	N/A	4"	Center	110
KR24-43L	4'-0"	12"	4"	Left	120
KR24-43R	4'-0"	12"	15"	Right	120
KR24-53C	5'-0"	12" Each	15"	Center	130
KR24-63C	6'-0"	18" Each	21"	Center	145
KR24-73C	7'-0"	24" Each	27"	Center	160

NOTE: Letter at end of Model Number represents Bowl Location
 MECHANICAL REQUIREMENTS: 1/2" IPS Hot and Cold water. 1-1/2" IPS drain connection.



Conforms to NSF St. 2