

**Refrigeration Equipment
Undercounter Refrigerator, 27" with
2 Drawer - Stainless Steel (R600a)**

ITEM # _____

MODEL # _____

NAME # _____

SIS # _____

AIA # _____



Short Form Specification

Item No. _____

2-drawer refrigerator counter top with exterior back panel in aluminium, exterior bottom panel in galvanized steel, exterior side and top panel in 430 stainless steel; interior back, top and bottom panels in 304 stainless steel.

Fin & tube condenser to improve the performances in high temperature environments. Automatic Defrost Cooling System and temperature control. Vinyl heavy duty adjustable, easy to handle and clean shelves. External temperature display.

R600a gas in refrigeration circuit.
ETL Safety and Sanitation certified.
3/5 Years warranty.

Main Features

- External temperature display.
- Removable door gasket for easy cleaning operations.
- Fin & Tube Condenser improves performance in high temperature environments.
- Automatic Defrost Cooling System provides worry-free performance.
- Electronic Temperature Control, quick and simple to set, with control display for easy monitoring.
- Heavy duty Vinyl coated steel shelves.
- High efficiency components to minimize the energy consumption still guaranteeing the highest performances.
- Cabinet and door insulated with high density polyurethane for low environmental impact.

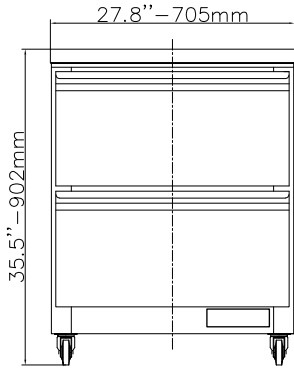
Construction

- Reversible door.
- Stainless steel interior and exterior, durable and easy to clean for daily commercial use.
- Self-closing door with 90-degree stay-open feature.
- Heavy duty casters.
- CFC and HCFC free (ecological refrigerant type: R600a).
- Pre-wired heavy duty power cord.
- Heavy duty door hinges.
- Magnetic door gasket removable without tools for easy cleaning.

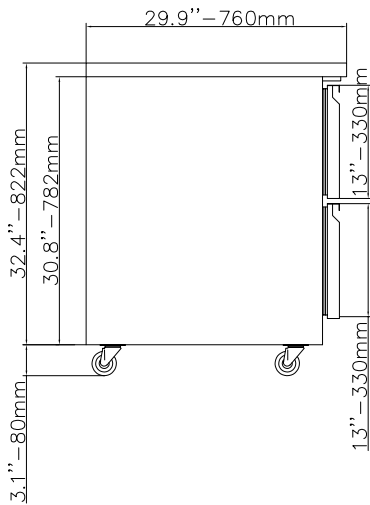
**Refrigeration Equipment
Undercounter Refrigerator, 27" with 2 Drawer - Stainless Steel
(R600a)**

APPROVAL: _____

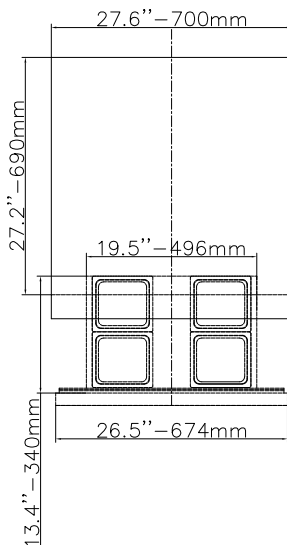
Front



Side



Top



EI = Electrical connection
RI = Refrigerant Inlet
RO = Refrigerant Outlet

Electric

Supply voltage:	
738290 (KCHUC27.2DR)	115 V/1 ph/60 Hz
Electrical power, max:	0.2 kW
Current consumption:	1.5 Amps
Plug type:	USA NEMA 5-15P

Key Information:

Capacity (Cu. Ft.)	27
External dimensions, Width:	27 9/16" (705 mm)
External dimensions, Depth:	29 15/16" (760 mm)
External dimensions, Height:	35 1/2" (902 mm)
Number and type of doors:	
Internal Dimensions (depth):	22 13/16"
Internal Dimensions (height):	23 1/2"
Internal Dimensions (width):	22 1/4"
Shipping height:	38 3/16" (970 mm)
Shipping weight:	185 lbs (84 kg)
Shipping volume:	20.41 ft ³ (0.58 m ³)
Number and type of grids (included):	1 - Vinyl-Coated Steel
Type of external material:	Stainless Steel
Type of internal material:	Polystyrene
Warranty:	3 / 5 years

Refrigeration Data

Compressor Horsepower:	1/6
Refrigerant type:	R600a
Refrigerant weight:	70 g
Operating temperature min.:	32 °F
Operating temperature max.:	41 °F
Condenser type:	Fin & tube
Defrost type:	Auto Defrost

Refrigeration Equipment
Undercounter Refrigerator, 27" with 2 Drawer - Stainless Steel (R600a)

The company reserves the right to make modifications to the products without prior notice. All information correct at time of printing.

