



Model: \_\_\_\_\_ Item #: \_\_\_\_\_ Date: \_\_\_\_\_

Project: \_\_\_\_\_ Qty: \_\_\_\_\_ Approved By: \_\_\_\_\_

# Recessed Drainboards / Frozen Drink Stand

Royal Series Underbar



KR24-RG24 shown

Model	Overall Length (A)	Depth (front-to-back) (B)	Weight (lbs.)
KR24-RG12	12"	24"	30
KR24-RG18	18"	24"	35
KR24-RG24	24"	24"	40
KR29-RG12	12"	29"	40
KR29-RG18	18"	29"	45
KR29-RG24	24"	29"	50

## Recessed Drainboard Specifications

### Materials

- Perforated Insert: 20 gauge stainless steel
- Front Apron: 22 gauge stainless steel clad over 20 gauge galvanized steel
- Backsplash: 20 gauge stainless steel
- Sides: 18 gauge stainless steel
- Back & Bottom: 20 gauge stainless steel

### Plumbing

- Drainboard: 1" IPS drain connection

### Depth (Front-To-Back)

- KR24 models: 24" overall depth
- KR29 models: 29" overall depth

### Backsplash

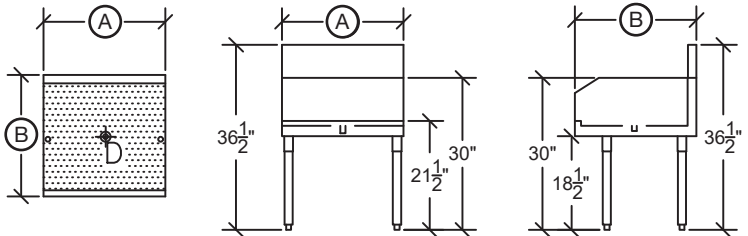
- 6-1/2"H x 1-1/2"D

### Legs

- 1-5/8" tubular 16 gauge stainless steel legs with grey plastic bullet foot

### Shelf

- Removable second tier shelf rests on top of first layer of glasses



## Frozen Drink Stand Specifications

### Materials

- Top: 20 gauge stainless steel
- Backsplash: 20 gauge stainless steel
- Sides: 18 gauge stainless steel
- Back & Bottom: 20 gauge stainless steel

### Depth (Front-To-Back)

- 29" overall depth

### Plumbing

- 1" IPS drain connection

### Working Height

- 23" working height

### Backsplash

- 6-1/2"H x 1-1/2"D

### Legs

- 1-5/8" tubular 16 gauge stainless steel legs with grey plastic bullet foot

### Features

- Low work surface to fit most machines
- Drain in rear with lip on all sides to prevent spillage
- Storage area below



KR29-18FD shown



Model	Overall Length	Depth (front-to-back)	Weight (lbs.)
KR29-18FD	18"	29"	78

