

Glass Storage Cabinets

Royal Series Underbar



KR24-GSB1
Adjustable Slides (3 racks)



KR24-GSB3
Middle Shelf (2 racks)



KR24-GSB4
Middle Shelf/Cutting Board (2 racks)



KR24-GSB5
Roll Out Shelves (2 racks)



KR24-24SC
Storage with Hand Sink

Model	Description	Length	Depth	20" x 20" Glass Rack Capacity	Weight
KR24-GSB1	Glass Storage with Drainboard Top and Adjustable (3) Rack Slides	24"	24"	3	40
KR24-GSB3	Glass Storage with Drainboard Top and Middle Shelf	24"	24"	2	48
KR24-GSB4	Glass Storage with Drainboard Top, Middle Shelf, Cutting Board	24"	24"	2	60
KR24-GSB5	Glass Storage with Drainboard Top and Roll Out Shelves	24"	24"	2	60
KR24-24SC	Glass Storage with Drainboard Top and Right Side Sink	24"	24"	-	70
KR24-24SC-L	Glass Storage with Drainboard Top and Left Side Sink	24"	24"	-	70

Standard Features

- Open front base for glass storage
- Drainboard top, optional perforated insert available
- Glass racks not included
- Royal Series faucet included with hand sink models KR24-24SC and KR24-24SC-L

Optional Accessories

KR-313	Left and Right End Side Splashes
KR-314	Right End Side Splash
KR-315	Left End Side Splash
30-160	Glass Storage with Left Side Sink (For KR24-24SC and KR24-24SC-L)
30-152	Glass Storage with Right Side Sink (For KR24-24SC and KR24-24SC-L)
21-443L	E-Z Install Flexible Water Line Kit (For KR24-24SC and KR24-24SC-L)
KR24-PE24	24" Perforated Insert (For KR24-GSB1 and KR24-GSB3 and KR24-GSB5)

Specifications

Drainboard	<ul style="list-style-type: none"> ▪ 20 gauge embossed stainless steel reinforced with welded braces every 6" ▪ 3/4" radius on all vertical and horizontal edges ▪ Perforated insert is optional except for model KR24-GSB4 where it is included
Material	<ul style="list-style-type: none"> ▪ Front apron: 20 gauge stainless steel ▪ Shelf: 20 gauge stainless steel ▪ Backsplash: 20 gauge stainless steel ▪ Sides: 20 gauge stainless steel ▪ Back and bottom: 20 gauge galvanized steel
Legs	<ul style="list-style-type: none"> ▪ 1-5/8" tubular 16 gauge stainless steel with grey plastic bullet foot
Plumbing	<ul style="list-style-type: none"> ▪ 1/2" drain on right rear of drainboard (23-110) (KR24-24SC and KR24-24SC-L does not have this drain as liquid drains directly to sink bowl) ▪ 1" bottom shelf drain (23-111) ▪ 1-1/2" drain on KR24-24SC sink bowl (23-122)
Cutting Board	<ul style="list-style-type: none"> ▪ Non-slip flush mounted cutting board on model KR24-GSB4 (CB-127)

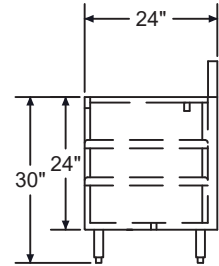
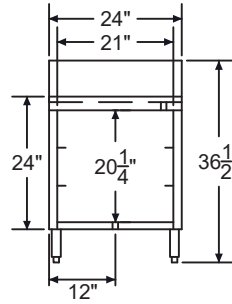
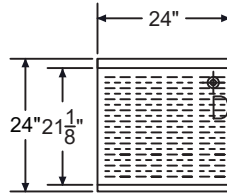


Glass Storage Cabinets

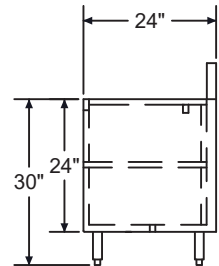
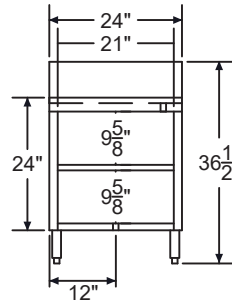
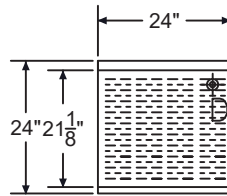
Royal Series Underbar



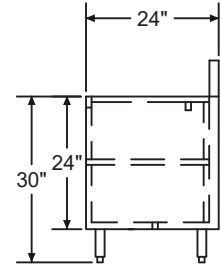
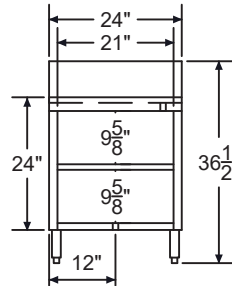
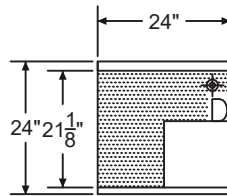
KR24-GSB1



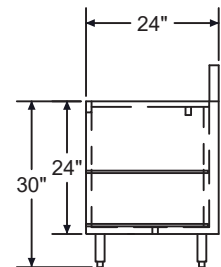
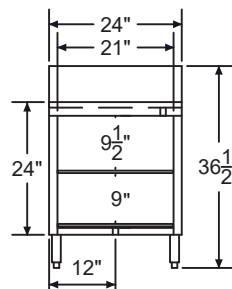
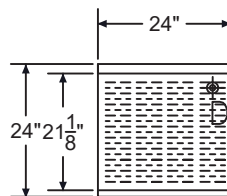
KR24-GSB3



KR24-GSB4



KR24-GSB5



**KR24-24SC
KR24-24SC-L**

KR24-24SC shown

KR24-24SC-L
is exact opposite
with sink on left.

