



**Included:**

Garnish Tray

Garnish Bins

**Recommended Hardware:**

#8 Pan Head Wood Screws

**Tools Required:**

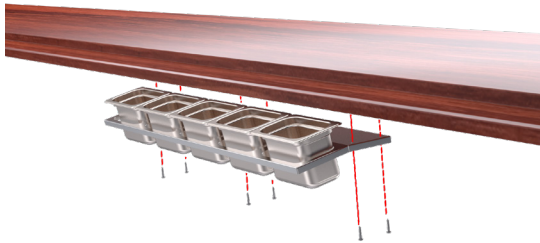
Phillips Head Screwdriver

# KR-UMGT Install Manual

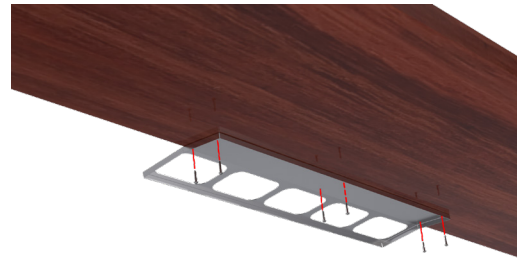
---

## Installation

1. Place garnish tray in your preferred location on the underside of your bar top with one hand.

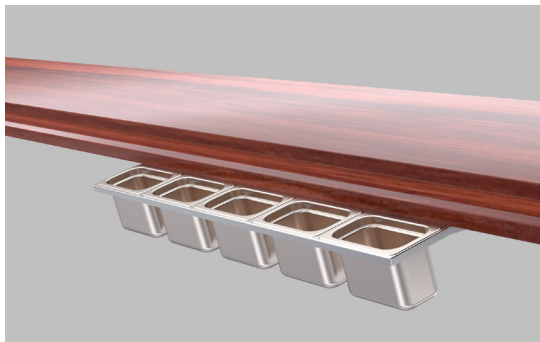


2. With your other hand, mark the hole locations on the underside of your bar.



3. Drill small pilot holes in the marked hole locations.

4. From underneath, screw the metal tray into the underside of the bar top.



5. Place the garnish bins inside the metal tray to complete your installation.

**\*NOTE:** This manual applies to all sizes offered for the KR-UMGT

**\*NOTE:** Use #8 Pan Head Wood Screws for installation. Please make sure to choose the correct length based on the thickness of your bar top.

---

Krowne • 100 Haul Rd. • Wayne, NJ 07470 • [krowne.com](http://krowne.com) • [customerservice@krowne.com](mailto:customerservice@krowne.com)

Due to our commitment to continued product improvement, specifications are subject to change without notice.

Rev. 12/2023