



Model: _____ Item #: _____ Date: _____
 Project: _____ Qty: _____ Approved By: _____

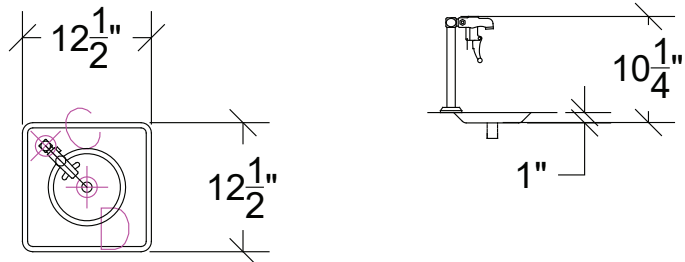
Drop-In Water Station

Royal Series



Standard Features

- 12-1/2" x 12-1/2" overall
- Adjustable flow with continuous on position
- 1/2" IPS male water inlet
- 1/2" NPS nickel plated brass drain
- Push back glass filler included (8" high from deck to spout tip)
- Heavy duty stainless steel wire grid



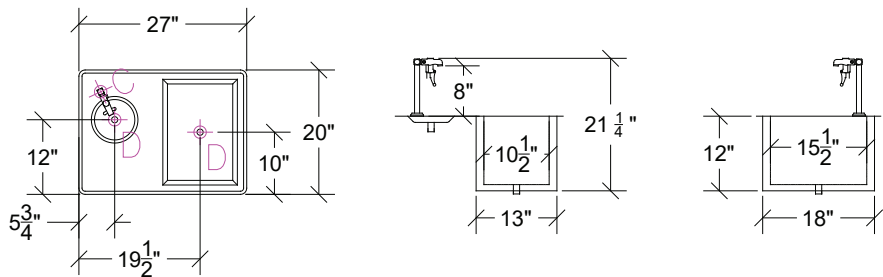
Model	Length	Width	Overall Depth	Cutout Size	Weight (lbs.)
WS-1	12-1/2"	12-1/2"	10-1/4"	11" x 11"	5

Drop-In Water/Ice Station



Standard Features

- 27" x 20" x 12" overall
- Push-back glass filler included (8" high from deck to spout tip)
- 1/2" IPS male water inlet
- 15-1/2" x 10-1/2" x 10" deep bin with 1" drain
- Heavy duty stainless steel wire grid



Model	Length	Width	Liner Depth	Overall Depth	Cold Plate Circuits	Ice Capacity (lbs.)	Cutout Size	Weight (lbs.)
WS-2	27"	20"	10"	21-1/4"	N/A	50	25-1/4" x 18-1/4"	40

WARNING: Plumbing connections should be made by qualified personnel who will observe all applicable plumbing, sanitary and safety codes.
 California Proposition 65 Warning