

Model: \_\_\_\_\_

Item #: \_\_\_\_\_ Quantity: \_\_\_\_\_

Project: \_\_\_\_\_



• **Sink Bowl:**

20 gauge 304 series stainless steel 10" x 14" x 10" deep. Furnished with 1" IPS rear corner drain and 7 1/2" overflow pipe.

**Note:** KR18-1C / KR21-1C 6" deep bowl.

• **Drainboard:**

20 gauge 304 series stainless steel reinforced with welded braces every six inches.

• **Front Apron:**

20 gauge 304 series stainless steel clad over 20 gauge galvaneal.

• **Sides:**

20 gauge 304 series stainless steel.

• **Backsplash:**

20 gauge 304 series stainless steel.

• **Back and Bottom:**

20 gauge galvaneal.

• **Legs:**

1 5/8" tubular 16 gauge stainless steel with grey thermoplastic bullet foot.

• **Faucet (included):**

Royal Series 4" center wall or deck mount faucet with cartridge valves. (1800 Series-wall mount, 2100 Series-deck mount)

• **Plumbing:**

1/2" IPS hot and cold water

1" IPS drain connection

**Accessories**

- ☐ Built-in 20 gauge Sound Deadened Krowne Royal Single Speedrail
- ☐ Built-in 20 gauge Sound Deadened Krowne Royal Double Speedrail
- ☐ Towel Ring
- ☐ Waste Manifold
- ☐ Perforated Basket
- ☐ Side Splash (specify left or right)
- ☐ Corner Return (specify left or right)
- ☐ 6" longer Stainless Steel Legs

Approved By: \_\_\_\_\_

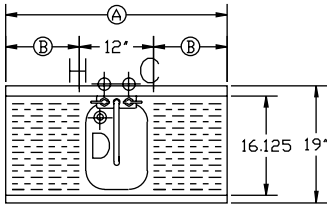


# Royal One Compartment Bar Sinks



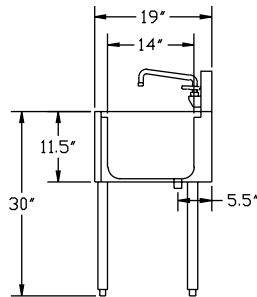
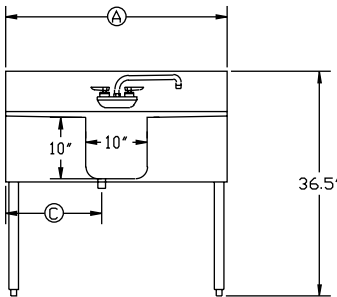
Model: \_\_\_\_\_ Item #: \_\_\_\_\_ Quantity: \_\_\_\_\_ Project: \_\_\_\_\_

## 1800 Series

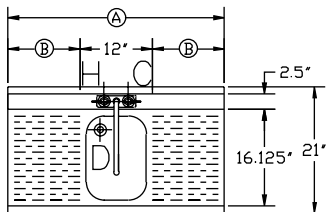


Model Numbers	Length (A)	Drainboard (B)	Left Side to Drain (C)	Bowl(s) Location	Weight lbs
KR18-1C*	1'-0"	n/a	6"	Center	42
KR18-31C	3'-0"	12" ea.	16"	Center	60

\* 6" deep bowl with 1 1/2" drain in center.

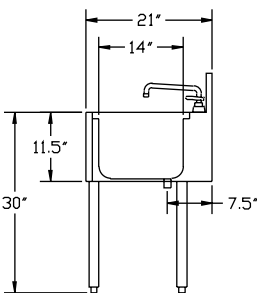
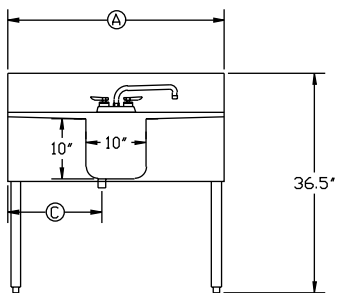


## 2100 Series



Model Numbers	Length (A)	Drainboard (B)	Left Side to Drain (C)	Bowl(s) Location	Weight lbs
KR21-1C*	1'-0"	n/a	6"	Center	42
KR21-31C	3'-0"	12" ea.	16"	Center	60

\* 6" deep bowl with 1 1/2" drain in center.



### Mechanical Requirements:

1/2" IPS Hot and Cold Connection.  
1" IPS Drain Connection.

Approved By: \_\_\_\_\_

Due to our commitment to continued product improvement, specifications are subject to change without notice.



**Metal  
Corporation**

257 Verona Ave. Newark, New Jersey 07104

[www.krowne.com](http://www.krowne.com)

[sales@krowne.com](mailto:sales@krowne.com)

**Phone: 800-631-0442**

**FAX: 973-485-1424**