



Model: \_\_\_\_\_

Item #: \_\_\_\_\_ Quantity: \_\_\_\_\_

Project: \_\_\_\_\_



**1800 or 2100 Series Available**  
(see reverse)

- **Sink Bowls:**  
20 gauge 304 series stainless steel 10" x 14" x 10" deep. Furnished with 1" IPS rear corner drain and 7 1/2" overflow pipe.
- **Drainboard:**  
20 gauge 304 series stainless steel reinforced with welded braces every six inches.
- **Front Apron:**  
20 gauge 304 series stainless steel clad over 20 gauge galvaneal.
- **Sides:**  
20 gauge 304 series stainless steel.
- **Backsplash:**  
20 gauge 304 series stainless steel.
- **Back and Bottom:**  
20 gauge galvaneal.
- **Legs:**  
1 5/8" tubular 16 gauge stainless steel with grey thermoplastic bullet foot.
- **Faucet (included):**  
Royal Series 4" center wall or deck mount faucet with cartridge valves. (1800 Series-wall mount, 2100 Series-deck mount)
- **Plumbing:**  
1/2" IPS hot and cold water  
1" IPS drain connection

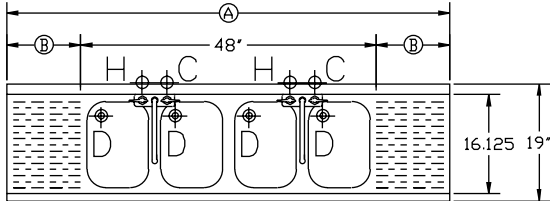
### Accessories

- Built-in 20 gauge Sound Deadened Krowne Royal Single Speedrail
- Built-in 20 gauge Sound Deadened Krowne Royal Double Speedrail
- Towel Ring
- Waste Manifold
- Perforated Basket
- Side Splash (specify left or right)
- Corner Return (specify left or right)
- 6" longer Stainless Steel Legs

Approved By: \_\_\_\_\_

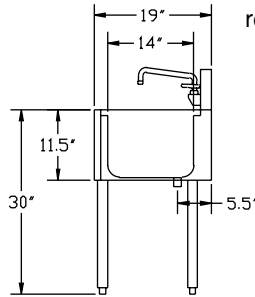
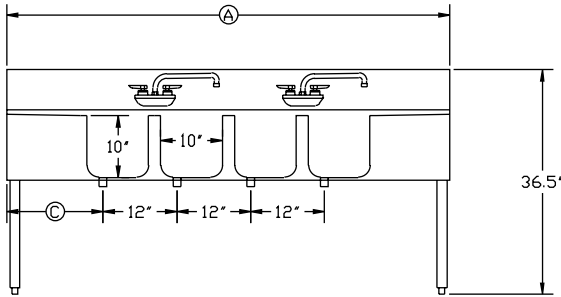
Model: \_\_\_\_\_ Item #: \_\_\_\_\_ Quantity: \_\_\_\_\_ Project: \_\_\_\_\_

## 1800 Series

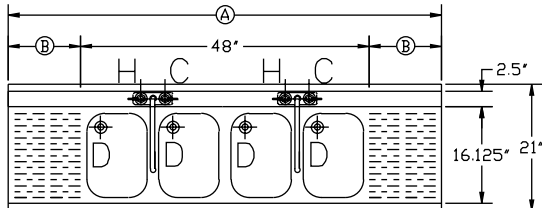


Model Numbers	Length (A)	Drainboard (B)	Left Side to Drain (C)	Bowl(s) Location	Weight lbs
KR18-44C	4'-0"	n/a	4"	Center	115
KR18-64C	6'-0"	12" (2 ea.)	15"	Center	140
KR18-74C	7'-0"	18" (2 ea.)	21"	Center	155
KR18-84C	8'-0"	24" (2 ea.)	27"	Center	190
KR18-94C	9'-0"	30" (2 ea.)	33"	Center	210

**Note:** Letter at end of Model # represents Bowl location.

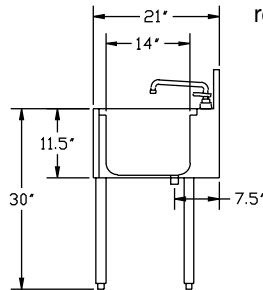
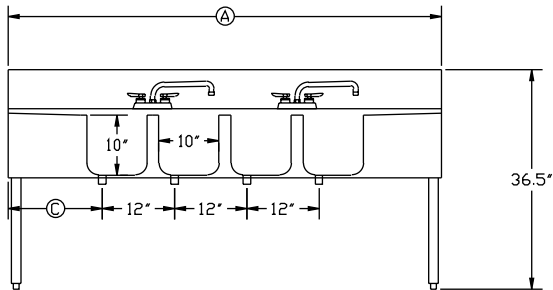


## 2100 Series



Model Numbers	Length (A)	Drainboard (B)	Left Side to Drain (C)	Bowl(s) Location	Weight lbs
KR21-44C	4'-0"	n/a	4"	Center	115
KR21-64C	6'-0"	12" (2 ea.)	15"	Center	140
KR21-74C	7'-0"	18" (2 ea.)	21"	Center	155
KR21-84C	8'-0"	24" (2 ea.)	27"	Center	190
KR21-94C	9'-0"	30" (2 ea.)	33"	Center	210

**Note:** Letter at end of Model # represents Bowl location.



### Mechanical Requirements:

1/2" IPS Hot and Cold Connection.  
1" NPS Drain Connection.

Approved By: \_\_\_\_\_

Due to our commitment to continued product improvement, specifications are subject to change without notice.