



Model: _____

Item #: _____ Quantity: _____

Project: _____



- **Sink Bowl:**
20 gauge 304 series stainless steel 10" x 14" x 6" deep. Furnished with 1 1/2" IPS centered drain.
- **Front Apron:**
20 gauge 304 series stainless steel clad over 20 gauge galvaneal.
- **Backsplash:**
20 gauge 304 series stainless steel.
- **Sides:**
20 gauge 304 series stainless steel.
- **Back and Bottom:**
20 gauge galvaneal.
- **Legs:**
1 5/8" tubular 16 gauge stainless steel with grey thermoplastic bullet foot.
- **Faucet:**
Royal Series 4" center wall or deck mount faucet with cartridge valves. (1800 Series-wall mount, 2100 Series-deck mount)
- **Plumbing:**
1/2" IPS hot and cold water.
1 1/2" IPS drain connection.

Accessories

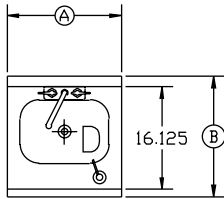
- Side Splash (specify Left or Right)
- Towel Ring (Basic Style Only)
- Perforated Basket (Basic Style Only)

Approved By: _____

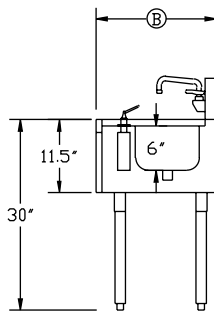
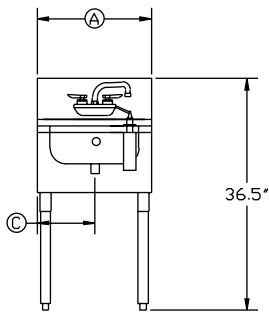
Model: _____ Item #: _____ Quantity: _____ Project: _____

1800 Series

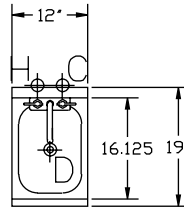
Soap and Towel



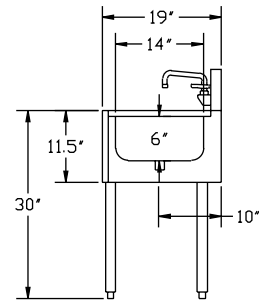
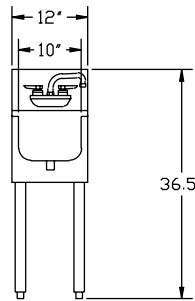
Model Numbers	Overall Length A	Depth B	Left Side to Drain C	Weight lbs.
KR18-12DST	1'-0"	24"	6"	60
KR18-18DST	1'-6"	24"	9"	60
KR18-18ST	1'-6"	19"	9"	60
KR18-18WST	1'-6"	19"	9"	49



Basic

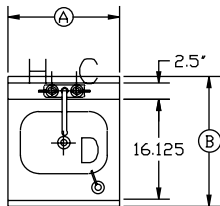


Model Numbers	Overall Length	Left Side to Drain	Weight lbs.
KR18-1C	1'-0"	6"	42

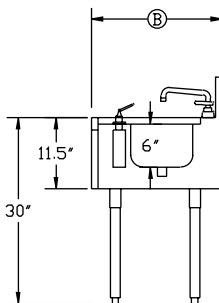
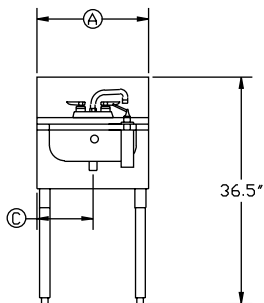


2100 Series

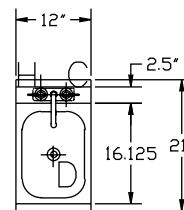
Soap and Towel



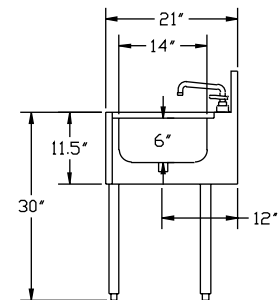
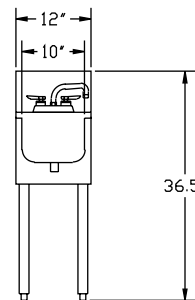
Model Numbers	Overall Length A	Depth B	Left Side to Drain C	Weight lbs.
KR21-12DST	1'-0"	26"	6"	60
KR21-18DST	1'-6"	26"	9"	60
KR21-18ST	1'-6"	21"	9"	60



Basic



Model Numbers	Overall Length	Left Side to Drain	Weight lbs.
KR21-1C	1'-0"	6"	42



Mechanical Requirements:

1/2" IPS Hot and Cold Connection
1 1/2" IPS Drain Connection

Approved By: _____

Due to our commitment to continued product improvement, specifications are subject to change without notice.