



MBGF SERIES

Glass Frosters/Plate Chillers

MBGF50



MODELS

- MBGF36
- MBGF50

FEATURES

CONSTRUCTION

- Stainless steel top
- Black painted steel finish on front, sides and back
- Galvanized steel interior with floor drain
- Easy-glide sliding lids constructed of stainless steel
- Integrated glass rail on rear top
- Door openings have plastic breaker strips to reduce condensation
- Foamed-in-place with low ODP polyurethane insulation
- Wall thickness: 1 1/2"

REFRIGERATION

- Self-contained forced air refrigeration system metered by capillary tube
- Evaporator coils epoxy-coated to resist corrosion
- Evaporator coils feature multiple fan motors and blades for greater air flow
- Automatic defrost and condensate evaporator requires no plumbing
- Access to slide-out condensing unit behind front grille for easy cleaning and service

- Refrigerant: R-134a on MBGF36 and R-404a on MBGF50
- Operating temperature: 0°F (-17°C)

WARRANTY

- **Standard limited three year parts and labor**
- **Additional two year coverage on compressor part**

OPTIONS

- Casters

BID SPECIFICATIONS

Item no. MBGF_____. Provide _____ Glass Froster/Plate Chiller(s), Master-Bilt model no. MBGF_____.

Glass froster will feature stainless steel top with integrated glass rail, and black painted steel front, sides and back. Interior will be galvanized steel with floor drain. Sliding lids will be constructed of stainless steel. Door

openings will have plastic breaker strips to reduce condensation.

The refrigeration system will be self-contained. MBGF36 will use R-134a refrigerant while MBGF50 will use R-404a. The operating temperature will be 0°F (-17°C). System will be equipped with coated evaporator coils and a condensate

evaporator. Condensing unit will be slide-out type for easy cleaning and service.

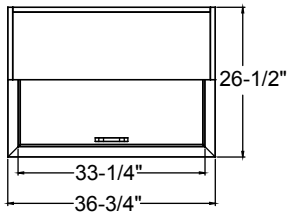
Glass froster/plate chiller to have standard limited 3-year parts and labor warranty with additional 2-year on compressor part.

Glass froster/plate chiller to be UL, C-UL and ETL Sanitation listed.

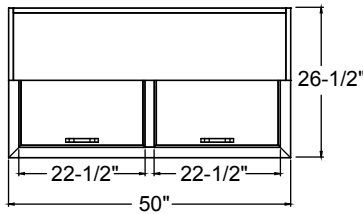
TECHNICAL SPECIFICATIONS

MODEL	DIMENSIONS (in.)			DIMENSIONS (mm)			VOLTS	AMPS	UNIT H.P.	NO. OF LIDS	NO. OF SHELVES	SHIP CU. FT.	SHIP WT. (LB/KG)
	L	D	H	L	D	H							
MBGF36	36 ³ / ₄	26 ¹ / ₂	33 ¹ / ₂	933	673	851	115	5.3	3/8	1	4	27.2	189/85
MBGF50	50	26 ¹ / ₂	33 ¹ / ₂	1270	673	851	115	7.9	1/2	2	5	33.5	233/105

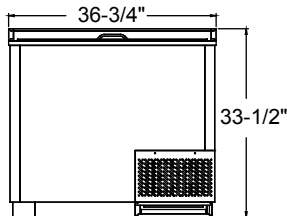
MODEL	CAPACITY 12 OZ. BEER MUG	CAPACITY 10 OZ. BEER STEIN	CAPACITY 12 OZ. BEER TANKARD	CAPACITY 8" GLASS	CAPACITY 12 OZ. SPORT MUG
MBGF36	159	150	145	132	187
MBGF50	237	226	219	206	286



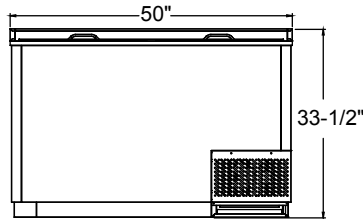
MBGF36
PLAN VIEW



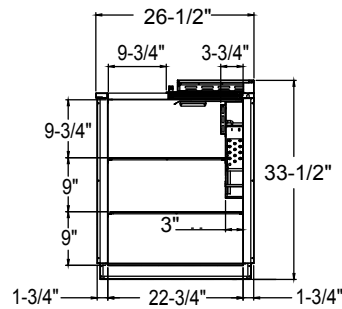
MBGF50
PLAN VIEW



MBGF36
ELEVATION VIEW



MBGF50
ELEVATION VIEW



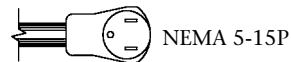
BOTH MODELS
SIDE VIEW

LISTINGS



HOOKUP

All models via plug in, 8 foot long flexible three wire 16 gauge cord with molded plug.



NOTE: Cabinet designed for optimum performance in air-conditioned area at 75°F ambient and 55% relative humidity. All specifications subject to change without notice.