



MXE2000



Ellipse Blending System

Ellipse Blending System

New and Improved Sound Enclosure

Completely redesigned to further help **reduce noise and vibration, proving you can still have commercial power without commercial strength noise.** Retrofittable to use with all MX bases via the new jar pod and adaptor ring. No tools required!

The New SE1500 Sound Enclosure is required for Auto Start mode.



Drive

Lithium-powered Ellipse Drive powers the Dasher system to rotate within the jar. Ellipse drive is controlled via 2 modes:
1 - **Manual** - choose from 10, 15 or 20 seconds of operation via push buttons
2 - **Auto Start** - automatically starts and runs for 30 seconds when Sound Enclosure is closed.



Lid and Dasher System

2-part assembly that helps expedite the blending process by breaking up and preventing the formation of air pockets by pushing ingredients back into the blade thus **reducing blend times and eliminating the need for a tamper.**



Jar Pad and Adaptor Ring

Sheds liquids keeping it clean and preventing material from getting into motor housing.



Docking Station

A hollow base designed to **store the Ellipse Drive between blends for easy access.** Docking Station can be placed in any direction under the base for user-convenience.



Charging Station

Charge your Drive in 2-hours! **One charge will last one full service day!**

Additional Single and Triple Charging stations sold separately.

Triple Charging Stations are ideal for larger volume establishments such as chain restaurants.



Experience the power of top-down blending that propels you beyond the limits of physics.

The Ellipse is the only **fully automated blending solution** that is powered from the top-down. It uses an **Independent Dual-Motor System**, to expedite the blending process, ensuring that your blend is consistent and to your desired quality every time!



The Ellipse utilizes the strongest and **most powerful blender base** in the Waring line, the **MX1500!**

- Powerful 3.5 HP, 30K RPM motor
- Electronic-membrane keypad with blue backlit LCD screen
- Adjustable speed controls and four programmable beverage stations
- Dual PULSE feature with reprogrammable speed control



Cylindrical Jar Design

Allows for the dasher to effortlessly rotate around the inside walls and scrape all contents back into the blade while blending, **dramatically reducing the occurrence of bridging and the formation of air pockets.**

*Made in USA with US and foreign parts.



@waringcommercial

©2022 Waring Commercial
314 Ella T. Grasso Avenue, Torrington, CT 06790
Tel. 800-492-7464 • Fax 860-496-9008

waringcommercialproducts.com

MXE2000



INCLUDED ACCESSORIES



MXEBU
Ellipse Base Unit
(includes Base Unit, Jar
Pad and Adaptor Ring)



MXECHG1
Ellipse Single
Charging Station



MXEFJA
Ellipse Full Jar Assembly
(includes Jar, Lid,
Dasher, and Drive)



MXEDS1
Ellipse Docking Station



MXEDR
Ellipse Drive



SE1500
Sound Enclosure Kit
(includes Sound
Enclosure, Jar Pad
and Adaptor Ring)

OTHER ACCESSORIES



MXECHG3
Ellipse Triple
Charging Station



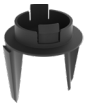
CAC198
Ellipse Jar Pad
and Adaptor Ring



CAC188
32 oz. Cylindrical
Copolyester Container



CAC119
Retainer Ring Wrench
for CAC93X, CAC95
& CAC188
(to remove blending
assembly from container)



CAC192
Ellipse Dasher



CAC187
Jar with Dasher, Lid
and Blade Assembly



CAC193
Ellipse Lid
(includes gaskets)



CAC190
Complete Retrofittable
Kit for MX Series
Blender Bases



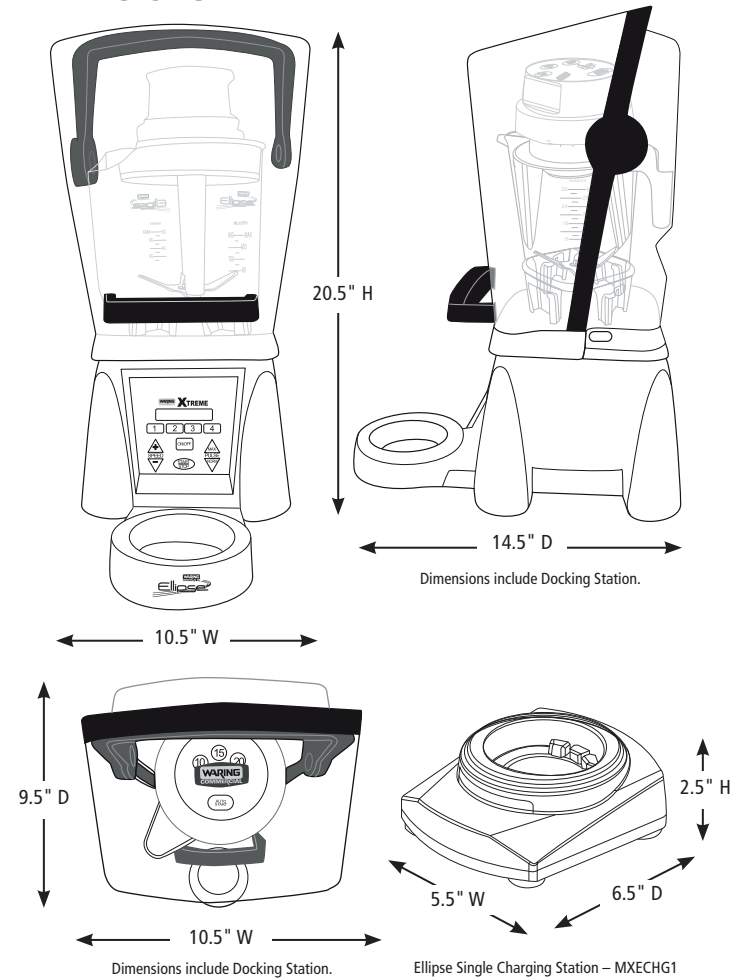
CAC194
Ellipse Blade Assembly



CAC197
Ellipse Jar Pad

Out-of-Box Weight: 20 lb.

DIMENSIONS



ELECTRICAL

Voltage: 120V
Frequency: 60Hz
Watts: 1500W
Amps: 12.5A
Plug Type: Type A
Cord Length: 6 feet



ORDERING INFORMATION	#STD. PKG.	GIFTBOX WEIGHT	CUBIC FEET	BOX DIMENSIONS L x W x H	UPC	CASE PKG.	MC WEIGHT	MC DIMENSIONS L x W x H	MBC
MXE2000 – Ellipse Blending System	1	23 lb.	2.69	18.75" x 11.125" x 22.25"	040072099038	1	24 lb.	19" x 11.5" x 22.875"	10040072099035



@waringcommercial

©2022 Waring Commercial
314 Ella T. Grasso Avenue, Torrington, CT 06790
Tel. 800-492-7464 • Fax 860-496-9008

waringcommercialproducts.com

22WC084694 / REV 12/22