



# ADVANTEDGE™ GLASS DOOR MERCHANDISERS



NLGR26H

NLGR48S

NLGR70H

PROJECT: .....

ITEM NUMBER: .....

MODEL NUMBER: .....

GLASS DOOR MERCHANDISERS

## SPECIFICATIONS FOR: NLGR26H, NLGR48S, NLGR70H

- **Finish:** White powder coated interior and exterior.
- **Insulation:** 2" foamed-in-place polyurethane insulation.
- **Hardware:** Four adjustable heavy duty vinyl-coated shelves (with product label strips) per door. Adjustable legs for leveling. Top panel backlit by fluorescent lights. Self closing doors with hold open feature. Interior fluorescent lights to illuminate product.
- **Door:** One and three door merchandisers are standard with swing style doors, two door merchandiser is standard with sliding doors.
- **Electrical:** 115 volt, 60 Hz, 1 phase with cord and plug.
- **Refrigeration:** Complete bottom mounted refrigeration system with a copper tube, aluminum fin evaporator. The condensate is collected and automatically evaporated from an energy efficient air over wick style vaporizer. Drain line is recessed in cabinet back. Refrigerant flow is controlled by a capillary tube. R-134a refrigerant. Temperature range: 32°F to 40°F.
- **Approvals:** UL, C-UL and ETL Sanitation.

Note: This equipment is intended for storage and display of non-potentially hazardous bottled or canned products only.

## STANDARD FEATURES

- Air cooled condensing unit
- Automatic condensate vaporizer
- Automatic defrost
- Capillary tube system
- Cord and plug
- Door hold open feature
- Magnetic gaskets
- Painted interior and exterior
- Sliding doors on two door model
- Swing style door on one and three door models
- Top backlit panel
- UL, C-UL and ETL sanitation
- Vinyl coated shelves
- Warranties: 1 Year Parts & Labor, 5 Year Compressor

## OPTIONAL FEATURES\*

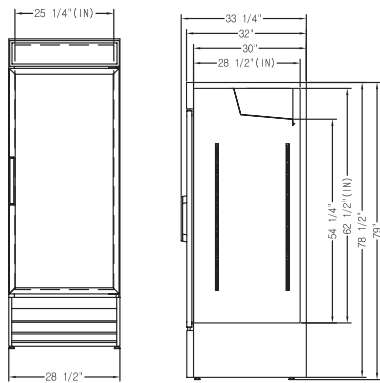
- Additional shelves



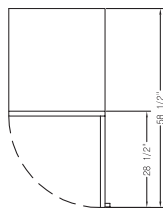
Nor-Lake, Inc.  
 Registered to ISO 9001:2008  
 File No. 10001816

\*Most options are available one week from receipt of order. Please contact us for specific questions.

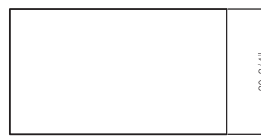
\*\*C-UL is Underwriters Laboratories Safety Certification Mark which indicates that UL has tested the equipment to applicable CSA Standards.



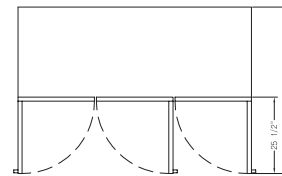
NLGR26H



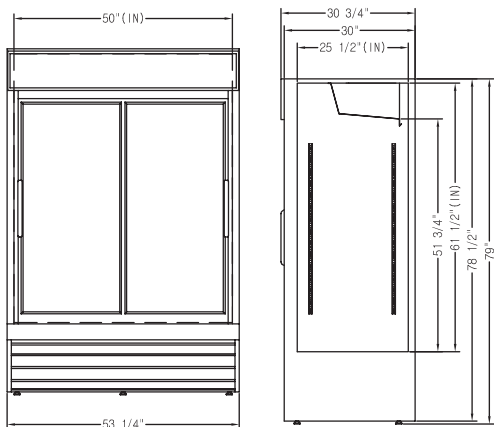
NLGR26H



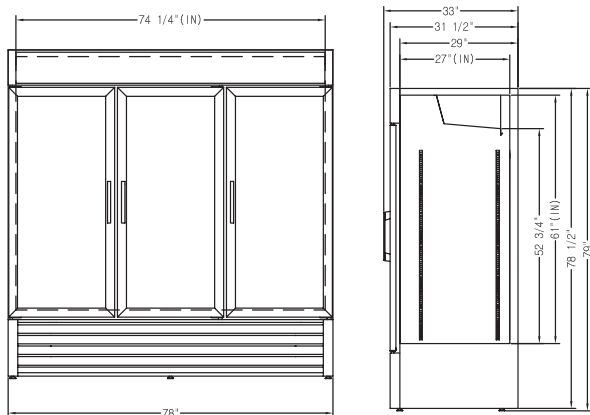
NLGR48S



NLGR70H



NLGR48S



NLGR70H

**SPECIFICATIONS**

Model	NLGR26H	NLGR48S	NLGR70H
Crated Height	84-1/4"	84-1/4"	85-1/2"
Crated Width	27-3/4"	53-3/4"	78-3/8"
Crated Depth	33-7/8"	32-7/8"	34-1/4"
Crated Weight (lbs.)	353	476	696
Interior Height	62-1/2"	61-1/2"	61"
Interior Width	25-1/4"	50"	74-1/4"
Interior Depth	28-1/2"	25-1/2"	27"
Overall Height	79"	79"	79"
Overall Width	28-1/2"	53-1/4"	78"
Overall Depth	33-1/4"	30-3/4"	33"
Gross Cubage (ft. <sup>3</sup> )	26	48	70
Number of Shelves	4	8	12
Number of Legs	4	6	6
Condensing Unit Size	1/3 HP	3/5 HP	3/5 HP
Refrigerant	R-134a	R-134a	R-134a
Electrical Characteristics	115/60/1	115/60/1	115/60/1
Cord and Plug Furnished	Yes	Yes	Yes
Nema Plug Configuration	5-15P	5-15P	5-15P
Total Amp Draw	3.9	9.5	11.9

Specifications subject to change without notice.



Revision: 04/11  
 ©2011 Nor-Lake, Inc.  
 Printed in the USA  
 Part Number: 146624



A City Discount