



Project:

Item Number:

Quantity:

Modular Drop-In: Non-Refrigerated Cold Pan

The Vollrath Company, L.L.C.

MODULAR DROP-IN: NON-REFRIGERATED COLD PAN



Modular Drop-In: Non-refrigerated Cold Pan

- MODELS:**
- 36491 One Pan
 - 36450 Two Pan
 - 36451 Three Pan
 - 36452 Four Pan
 - 36453 Five Pan
 - 36454 Six Pan

FEATURES

- Top is 18-gauge stainless steel, 18-8 Type 304, with 3/8" (9.52 mm) overhang on all sides and die stamped with full-perimeter drip edge. Molded breaker gasket fitted under drip edge.
- Flat work surface around opening.
- Seamless well is 18-gauge 18-8 stainless Type 304, 8" (20.32) deep.
- 1" (2.5 cm) integral drain.
- Inner well assembly is insulated with foamed in place polyurethane foam insulation.
- Exterior housing is 18-gauge galvanized steel.
- Optional perforated false bottom is nominal 1" (2.5 cm) high and constructed of 18-gauge Type 304 stainless steel. False bottom will reduce pan depth by same dimension. False bottom options:

Drop-In Model	False Bottom Model
36491	20000
36450	36913
36451	36914
36452	36915
36453	36916
36454	36917

- Positioning clips provided to center drop-in within cutout.
- Full one-year parts and labor warranty.

DESCRIPTION

The modular drop-in non-refrigerated cold pans are designed for top-mount installation.

A full-perimeter drip edge contains spills and condensation within the stainless steel countertop area of the drop-in.

High-density polyurethane foam insulation surrounds the exterior of the well to provide better temperature maintenance and hold ice longer.

The 8" (20.32 cm) deep display well provides maximum capacity for ice, essential for optimum presentation and performance. The seamless well is designed for maximum capacity.

1" (2.5 cm) integrated drain is standard. Optional perforated false bottom allows melted ice to drain away from pans and containers.

Agency Certifications



Approvals
Date:



Setting the Standard™

www.vollrathco.com

The Vollrath Company, L.L.C.
 1236 North 18th Street
 Sheboygan, WI 53082-0611
 U.S.A.
 Main Tel: 800.624.2051
 Service Tel: 800.628.0832
 FAX: 800.752.5620

Vollrath of Canada, Co
 Tel: 800.695.8560
 FAX: 800.752.5620

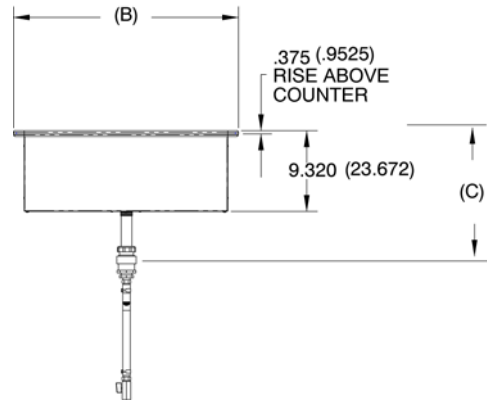
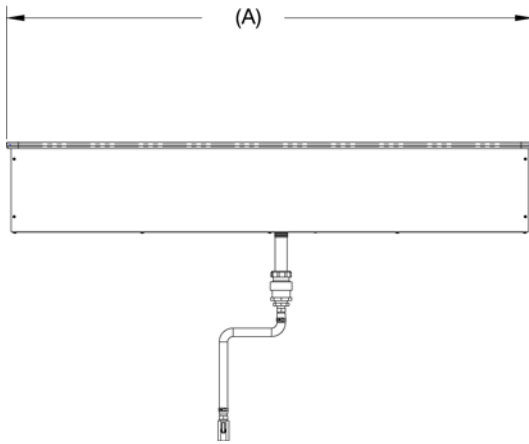
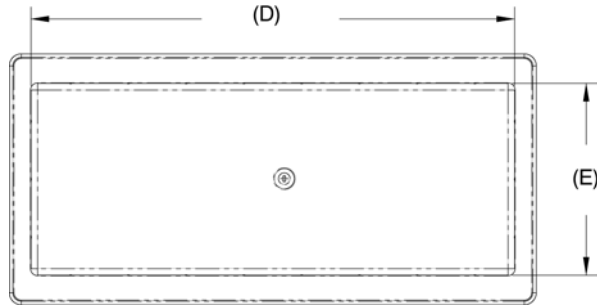
A City Discount

MODULAR DROP-IN: NON-REFRIGERATED COLD PAN

MODELS:	36491 One Pan	36452 Four Pan
	36450 Two Pan	36453 Five Pan
	36451 Three Pan	36454 Six Pan

DIMENSIONS

- ❑ Opening cutout must have a 7/8" (2.22 cm) corner radius.
- ❑ Dimensions shown in inches (cm).



Item	(A) Length	(B) Width	(C) Height	(D)	(E)	Cutout	
						Length	Width
36491	15.00 (38.10)	26.00 (66.04)	17.95 (45.085)	12.00 (30.48)	19.875 (50.482)	14.25 (36.20)	25.25 (64.14)
36450	29.00 (73.70)	26.00 (66.04)	17.95 (45.085)	24.75 (62.865)	19.875 (50.482)	28.25 (71.80)	25.25 (64.14)
36451	41.50 (105.41)	26.00 (66.04)	17.95 (45.085)	37.50 (95.25)	19.875 (50.482)	40.75 (103.505)	25.25 (64.14)
36452	54.75 (139.065)	26.00 (66.04)	17.95 (45.085)	50.25 (127.635)	19.875 (50.482)	54.00 (137.16)	25.25 (64.14)
36453	68.00 (172.72)	26.00 (66.04)	17.95 (45.085)	63.00 (160.02)	19.875 (50.482)	67.25 (170.815)	25.25 (64.14)
36454	81.25 (206.375)	26.00 (66.04)	17.95 (45.085)	75.75 (192.405)	19.875 (50.482)	80.50 (204.47)	25.25 (64.14)



www.vollrathco.com

The Vollrath Company, L.L.C.
 1236 North 18th Street
 Sheboygan, WI 53082-0611
 U.S.A.
 Main Tel: 800.624.2051
 Service Tel: 800.628.0832
 FAX: 800.752.5620

Vollrath of Canada, Co
 Tel: 800.695.8560
 FAX: 800.752.5620