



E-MAIL: sales@johnboos.com Web Site: www.johnboos.com

**JOHN BOOS & CO.**  
 315 SOUTH FIRST STREET  
 P.O. BOX 609  
 EFFINGHAM, IL. 62401  
 (217) 347-7701 / FAX (217) 347-7705

REVISIONS:

**JOHN BOOS & COMPANY**

THIS DRAWING AND THE DESIGN SHOWN ARE THE PROPERTY OF JOHN BOOS & CO. REPRODUCTION, IMPRISINGEMENT OR ANY OTHER UNAUTHORIZED USE OF THIS DRAWING WITHOUT THE WRITTEN CONSENT OF JOHN BOOS & CO. WILL BE SUBJECT TO LEGAL ACTION.

SALES ORDER NUMBER:

JK

DRAWN BY:

4-02-01

DATE:

1/2"=1'

SCALE:

PMMS2016-12

MODEL NUMBER:

QUANTITY:

ITEM NUMBER:

ROOM NUMBER:

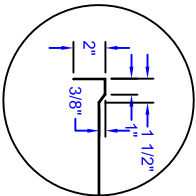
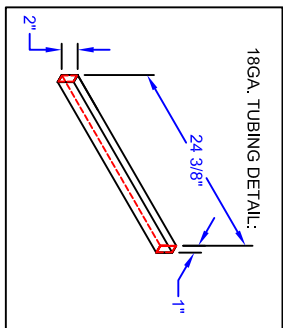
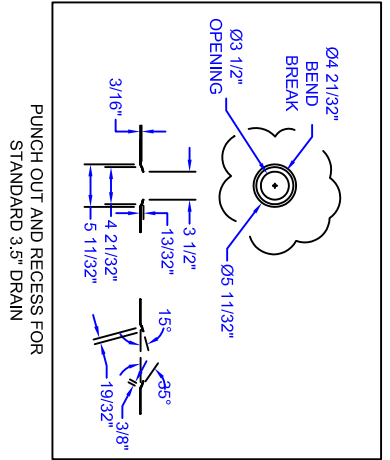
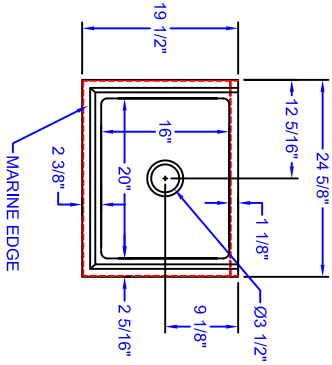
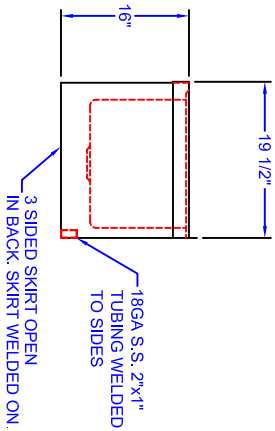
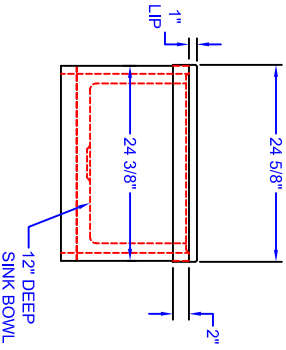
QUAD LOCATION:

SHEET NUMBER:

MATERIALS

DECK: 18GA. S.S.

BASE: 18GA. S.S.



MARINE EDGE DETAIL

FEATURES:  
 FLOOR MOUNTED UNIT ELIMINATES THE NEED OF LIFTING HEAVY CONTAINERS.

SINK BOWL WELDED IN, CONSISTENCY OF FULL GAUGE THICKNESS THROUGHOUT.

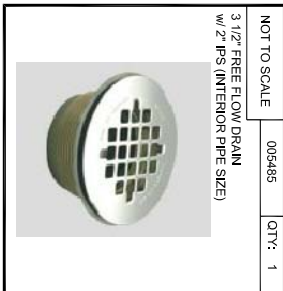
CONSTRUCTION:  
 TIG WELDED AND POLISHED TO BLEND TO MATCH ADJACENT SURFACES.

DRAIN IS 2" IPS

TOLERANCES:  
 DIMENSIONAL DIMENSIONS ± .0625  
 ANGULAR DIMENSIONS ± .5 DEGREE

CONSTRUCTION NOTES:

- 304 STAINLESS STEEL
- ALL FABRICATION, WELDING, POLISHING, SEALANT, COMPONENTS TO BE IN ACCORDANCE WITH NSF STANDARD 2
- ALL WELDS TO BE GROUND SMOOTH, POLISHED AND BLENDED TO MATCH ADJACENT SURFACES



NOT TO SCALE  
 005485  
 QTY: 1  
 3 1/2" FREE FLOW DRAIN  
 w/ 2" IPS (INTERIOR PIPE SIZE)

- 12" DEEP FABRICATED BOWL
- MARINE EDGE ON 3 SIDES
- SINK SKIRT 3 SIDES OPEN IN REAR

NOTES: