

PrepPal® PPG Series Meat Grinder

Standard Features

- Powerful, high torque motor, with manual reset overload protection
- 1.5 HP (PPG-22)
- 1 HP (PPG-12)
- Direct gear-driven transmission, mounted on ball bearings
- Permanent grease-lubricated gear box
- Manual reset motor overload protection
- Forward/reverse switch
- Compact size and seamless construction
- 450 lbs/hr meat capacity (PPG-22)
- 250 lbs/hr meat capacity (PPG-12)
- Top-mounted handle with tray support
- Non-slip rubber feet Six-foot cord and plug



Standard Accessories

- Knife
- Stainless steel product tray
- 1/4" (6mm) plate
- 5/16" (8mm) plate
- Plastic food pusher
- Sausage Stuffing Tube

PPG-12



PPG-22



Specifications

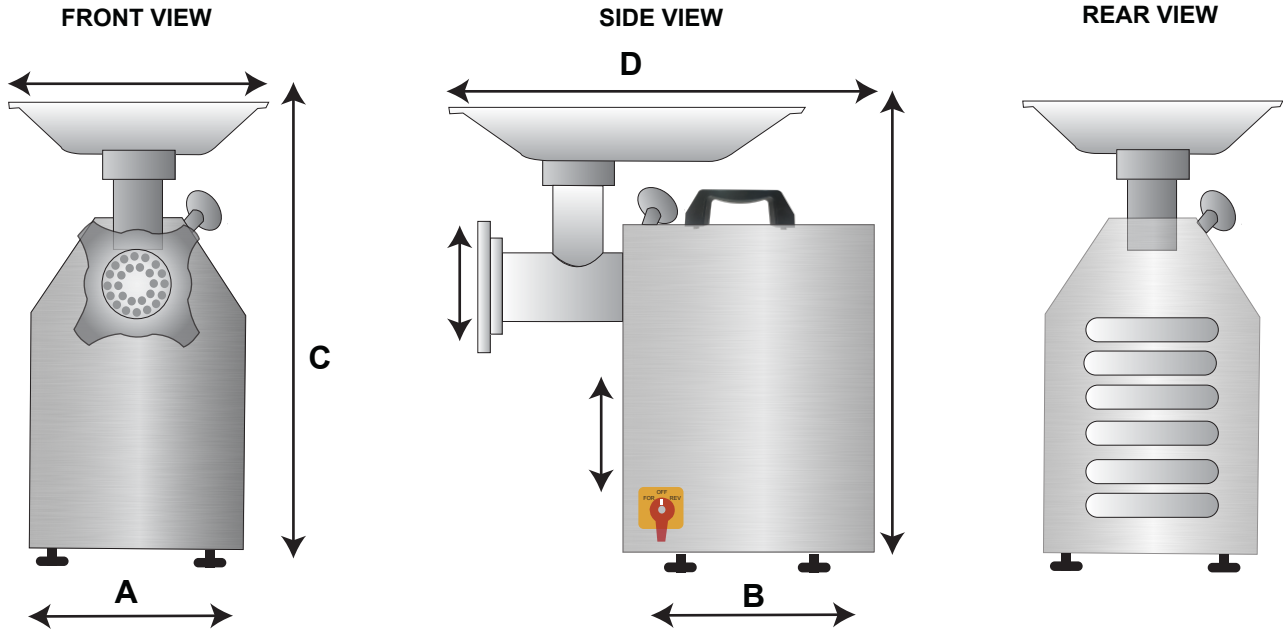
Model	Motor	Voltage	Capacity Per Hour	Worm Speed	Hub	Overall Dimension				NW/GW (lbs)
						A	B	C	D	
PPG-12	1HP/735W	110V/60Hz/1P	250 lbs	170RPM	#12	220 8.6	245 10	480 19	420 16.3	31 kg / 28 kg (68 lbs / 61 lbs)
PPG-22	5HP/1100W	110V/60Hz/1P	450 lbs	170RPM	#22	240 9.3	290 11.5	530 21	470 18.5	38 kg / 34.5 kg (84 lbs / 76 lbs)



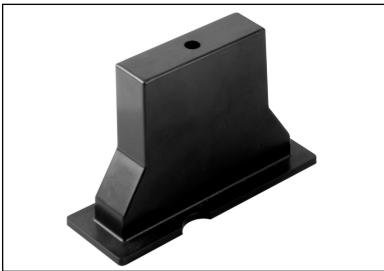
1 YEAR PARTS AND LABOR WARRANTY (US ONLY)



PLAN VIEW



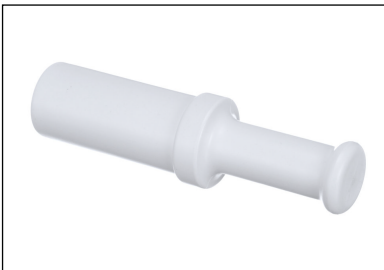
ACCESSORIES



FOOD TRAY SUPPORT



MEAT GRINDER ATTACHMENTS



MEAT PUSHER



SAUSAGE STUFFER

Terms and Conditions

One Year Limited Warranty

Atosa Catering Equipment warrants its equipment against defects in materials and workmanship, subject to the following conditions:

Atosa Catering Equipment is warranted for one year, effective from the date of purchase by the original owner. A copy of the original receipt or other proof of purchase is required to obtain warranty coverage. This warranty applies to the original owner only, and is nontransferable.

Should any product fail to function in its intended manner under normal use within the limits defined in this warranty, at Atosa's discretion, such product will be replaced with a new unit by Atosa, after defective unit has been inspected. And defect has been confirmed. Atosa does not assume any liability for extended delays in replacing any item beyond its control. This warranty does not apply to plastic and non-metallic synthetic parts that may need to be replaced due to normal usage, or lack of preventative maintenance.

WHAT IS NOT COVERED BY THIS WARRANTY

Equipment that has not properly been maintained, damage from improper cleaning, and water damage to controls.

Equipment that has not been used in an appropriate manner, or has been subject to misuse, neglect, abuse, accident, alteration, negligence, damage during transit, fire, flood, or acts of God.

If the equipment has been changed, altered, modified, or repaired without express written permission from Atosa, then the manufacturer shall not be liable for any damages to any person or to any property, which may result from the use of this equipment thereafter.

For warranty and non-warranty related issues, technical support, purchase replacement parts contact Atosa toll free (855) 855-0399

*In some cases, a 25% restocking fee may be charged to a buyer for returned items