

## Open Merchandisers-32 Series Multi Purpose 44"H - Refrigerator Endless Design

• PRODUCT SPECIFICATIONS SHEETS



- Cases are designed to operate at 75 degrees Fahrenheit and 55% relative humidity

Self-Contained Remote	S32E-3 R-S32E-3	S32E-4 R-S32E-4	S32E-6 R-S32E-6
Length with ends	38"	50"	74"
Length without ends	36"	48"	72"
Height with ends	44"	44"	44"
Height without ends	43-7/8"	43-7/8"	43-7/8"
Depth with ends	30-1/2"	30-1/2"	30-1/2"
Depth without ends	30"	30"	30"

(Dimensions are +/-1/4")

- Specification subject to change without notice

## Open Merchandisers-32 Series Multi Purpose 44"H - Refrigerator Endless Design

### Standard Specifications and Optional Features

<p><b>CONSTRUCTION</b> UL Classified to ANSI/NSF 7 Foamed in place CFC free foam Heavy gauge steel super structure Endless design allows for continuous line up</p>	<p><b>FINISHES</b> Designer white or black end panels Designer white or black front rail Designer white or black front color band Designer white or black end trim</p>
<p><b>INTERIOR</b> Designer white or black end panels Removable designer white or black floor racks Designer white or black perforated rear wall (<i>for even air distribution</i>) 3 tier step rack</p>	<p><b>REFRIGERATION</b> R134a expansion valve system Automatic condensate Low velocity fans located below deck area (<i>to insure even flow of air</i>) Pressure control maintains constant temperatures Auto defrost controlled by time clock (<i>self contained units only</i>) Air screen technology Self contained system Copeland hermetic unit Remotes available</p>
<p><b>EXTERIOR</b> Designer white or black ends and front Designer white or black color-band Designer white or black end trim Removable front grille allows for cleaning and servicing</p>	<p><b>LIGHTING</b></p>
<p><b>ELECTRICAL REQUIREMENTS</b> 115V/60Hz/1Ph Cord and plug provided UL/CUL listed</p>	<p><b><i>Important Note: All refrigerated cases are designed to operate in an environment of 75 degrees and 55% relative humidity.</i></b>  <b><i>Important Note: Product must be cooled before being displayed within the case.</i></b></p>

(ALL WHITE OR ALL BLACK, NO EXTRA CHARGE—IF COLORS ARE MIXED AN ADDITIONAL CHARGE WILL APPLY)

### OPTIONAL FEATURES

<p>Rear grille Digital thermometer Sandwich/ fruit racks</p>	<p>Stainless steel, laminate or paint Night cover Peg bars Glass shelf</p>
--	--



## Open Merchandisers-32 Series Multi Purpose 44"H - Refrigerator Endless Design

### Technical Data

Model #	Self contained	S32E-3	S32E-4	S32E-6
	Remote	R-S32E-3	R-S32E-4	R-S32E-6
Length with ends Length without ends Height with ends Height without ends Depth with ends Depth without ends (Dimensions are +/- 1/4")		38" 36" 44" 43-7/8" 30-1/4" 30"	50" 48" 44" 43-7/8" 30-1/4" 30"	74" 72" 44" 33-7/8" 30-1/4" 30"
Operating temperature Refrigerant (expansion valve) Compressor size HP Pressure control settings @ 75°F, 55%RH  Defrost per day (24 hours) BTU's at +20°F Evap. Temp. Voltage Amperage Amperage Cord and plug	Self contained Self contained  CUT IN CUT OUT Air Defrost Remote  Self contained Remote	36°F to 40°F R134a 1/2 29 12 6 @ 20 min. 3100 115V 11.3A 0.7A Yes(15A)	36°F to 40°F R134a 1/2 29 12 6 @ 20 min. 4130 115V 11.3A 0.7A Yes(15A)	36°F to 40°F R134a 3/4 29 12 6 @ 20 min. 6200 115V 16.0A 1.4A Yes(20A)
Exterior color Interior color Inside end panels Floors		White White White White	White White White White	White White White White

(ALL WHITE OR ALL BLACK, NO EXTRA CHARGE—IF COLORS ARE MIXED AN ADDITIONAL CHARGE WILL APPLY)

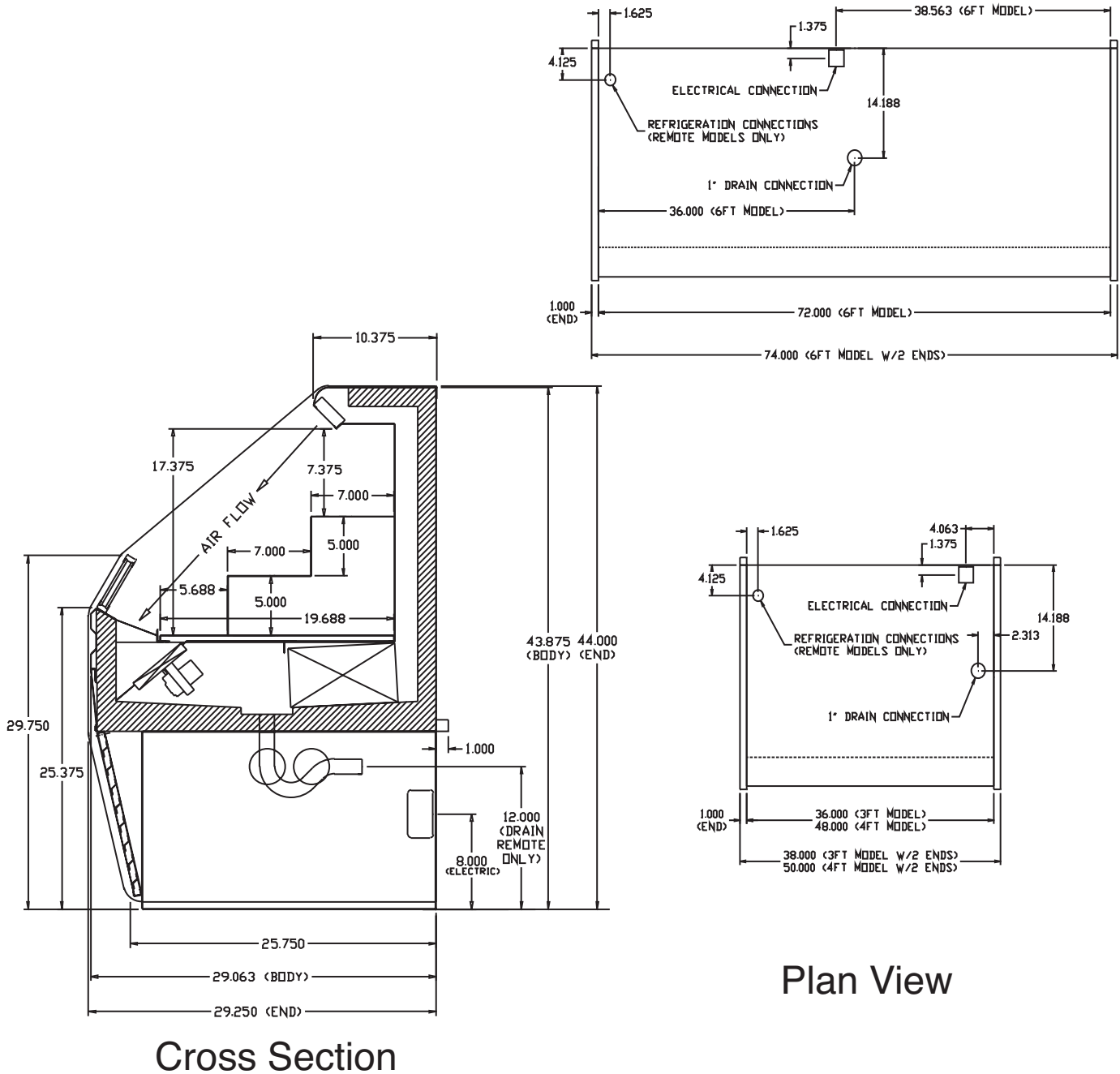
### SHIPPING INFORMATION

Height		49"	49"	49"
Depth		44"	44"	44"
Length		61"	61"	87"
Gross weight	Self contained Remote	365# 240#	410# 285#	505# 355#
Cubic feet		75ft <sup>3</sup>	75ft <sup>3</sup>	75ft <sup>3</sup>

- Cases are designed to operate at 75 degrees Fahrenheit and 55% relative humidity
- Specification subject to change without notice

## Open Merchandisers-32 Series Multi Purpose 44"H - Refrigerator Endless Design

### Technical Data • Side View • Plan View



Plan View