

40E Series - Endless Design Curved Glass - Bakery

• PRODUCT SPECIFICATIONS SHEETS



- Cases are designed to operate at 75 degrees Fahrenheit and 55% relative humidity

Self-Contained Remote	SC-CBS40E-4C R-CBS40E-4C	SC-CBS40E-6C R-CBS40E-6C	SC-CBS40E-8C R-CBS40E-8C
Length with (2) ends	51"	75"	99"
Length without ends	48"	72"	96"
Height with ends	53"	53"	53"
Height without ends	52-1/2"	52-1/2"	52-1/2"
Depth with ends	40"	40"	40"
Depth without ends	38-7/8"	38-7/8"	38-7/8"
Endless Design	YES	YES	YES

(Dimensions are +/-1/4")

- Specification subject to change without notice

40E Series - Endless Design Curved Glass - Bakery

Standard Specifications and Optional Features

<p>CONSTRUCTION UL Classified to ANSI/NSF 7 Foamed in place CFC free foam Heavy gauge steel super structure Single duty display Endless design allows for continuous line up Drain is included for cleaning Extra wide double bend curved glass (<i>enhances product display</i>)</p>	<p>FINISHES Grey finish extrusion on doors and door tracks Designer white exterior front and ends Trim Stainless steel heavy gauge top- 13-3/4"W Rear of unit is stainless steel brush finish at top Bottom rear is designer white aluminum</p>
<p>INTERIOR White interior ends 2 rows of glass shelving White aluminum floor (main deck area) Epoxy coated main deck shelves Air insulated baffle (<i>prevents moisture from dripping into display area</i>)</p>	<p>REFRIGERATION Copevap system eliminates need for condensate pan R134a expansion valve system Gravity coil located at inside top of unit Self contained system Temperature and defrost electronically controlled Remotes available</p>
<p>EXTERIOR Double pane rear removable doors Rear doors use the McGlide door system** (<i>for easy access</i>) Removable front grille allows for cleaning Removable rear grille for easy servicing 1-1/2" removable end panels Front bumper 2" - gray</p>	<p>LIGHTING 1 Row of T8 lighting at top of unit</p> <p>**McGlide door system is built with a extra tight door jam which helps seal the door tight when closed and prevents cold air from leaving the unit saving energy costs.</p>
<p>ELECTRICAL REQUIREMENTS 115V/60Hz/1Ph Hard wired UL/CUL listed 115V- general purpose receptacle</p>	<p><i>Important Note: All refrigerated cases are designed to operate in an environment of 75 degrees and 55% relative humidity.</i></p> <p><i>Important Note: Product must be cooled before being displayed within the case.</i></p>

OPTIONAL FEATURES

<p>Scale stand Paper cutter Stainless steel, laminate, or paint Mirrored doors Drop work shelf Lights for mezzanine shelf</p>	<p>Door locks Digital thermometer Front bumpers - optional color and marketing location Solid shelves Mirrored ends</p>
--	---



40E Series - Endless Design Curved Glass - Bakery

Technical Data

Model #	Self contained	SC-CBS40E-4C	SC-CBS40E-6C	SC-CBS40E-8C
	Remote	R-CBS40E-4C	R-CBS40E-6C	R-CBS40E-8C
Length with (2) ends Length without ends Height with ends Height without ends Depth with ends Depth without ends Endless design (Dimensions are +/- 1/4")		51" 48" 53" 52-1/2" 40" 38-7/8" Yes	75" 72" 53" 52-1/2" 40" 38-7/8" Yes	99" 96" 53" 52-1/2" 40" 38-7/8" Yes
Operating temperature Refrigerant (expansion valve) Compressor size- HP Electrical control settings at 75°F, 55%RH Defrost per day (24 hours) BTU's at +20°F Evap. Temp. Voltage Amperage Amperage- lights only Cord and plug	Self contained Self contained CUT IN CUT OUT Air Defrost Remote Self Contained Remote	38°F to 41°F R134a 1/4 41 36 1 per day 1400 115V 6.0A 0.8A No	38°F to 41°F R134a 1/3 41 36 1 per day 2100 115V 8.7A 1.3A No	38°F to 41°F R134a 1/2 41 36 1 per day 2800 115V 11.2A 1.6A No
Exterior color Interior color Inside end panels Floors # Of top doors # Of coils Bottom storage Front Glass Main deck shelf # Shelf size Mezzanine shelf Cubic Capacity (ft ³)		White Stainless White White 2 1 No Curved 2 23-1/2"X32-5/8" 2 Rows 24.5	White Stainless White White 2 1 No Curved 3 23-1/2"X32-5/8" 2 Rows 36.8	White Stainless White White 4 1 No Curved 4 23-1/2"X32-5/8" 2 Rows 49

SHIPPING INFORMATION

Height		58"	58"	58"
Depth		44"	44"	44"
Length		61"	87"	109"
Gross weight	Self contained Remote	530# 497#	741# 693#	897# 832#
Cubic feet		89ft ³	128ft ³	164ft ³

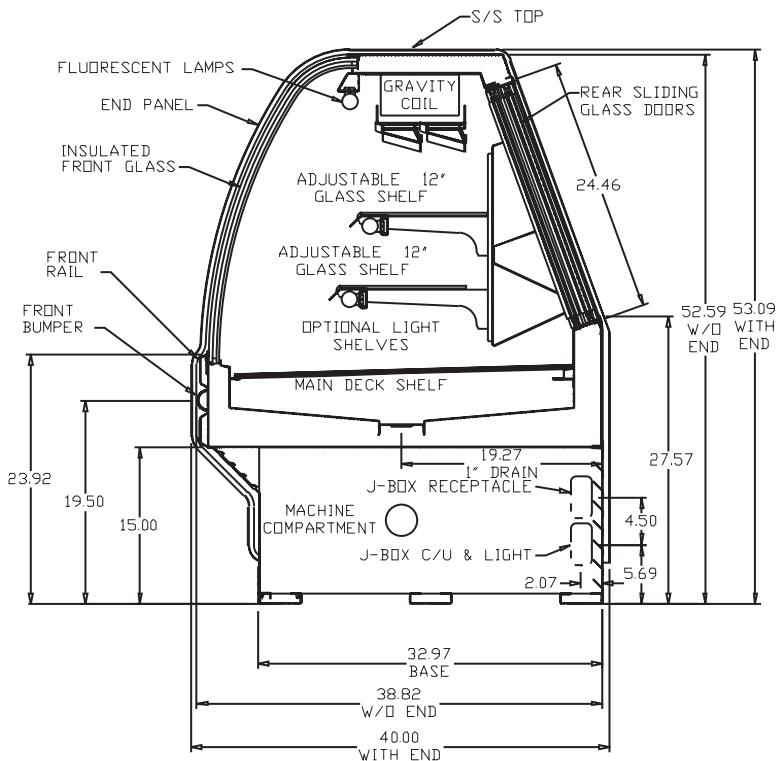
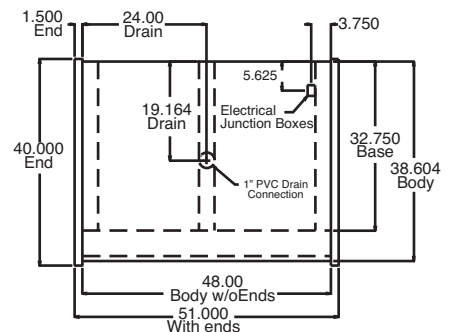
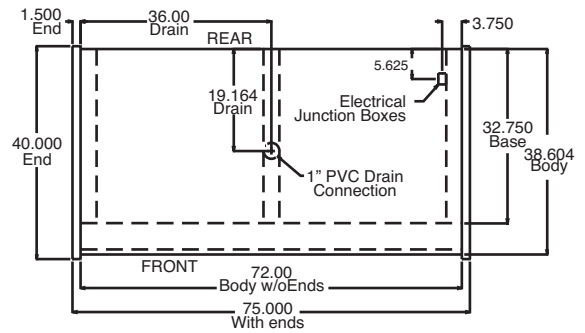
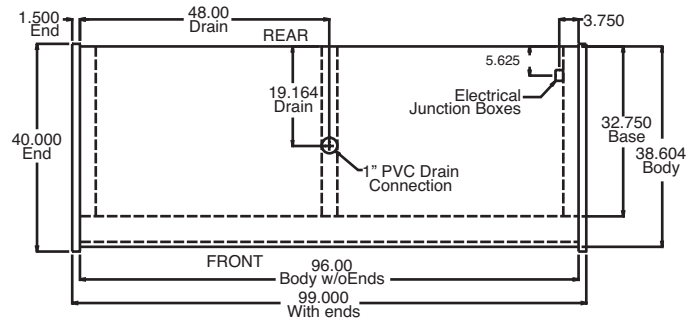
- Cases are designed to operate at 75 degrees Fahrenheit and 55% relative humidity
- Cases are equipped with washout drains; check your local building codes for connection requirements.
- Specification subject to change without notice

A Division of HMC Enterprises LLC • 2501 Grant Avenue • Philadelphia, PA 19114 USA

(215) 464-6800 • 1-800-344-8222 • Fax (215) 969-4890 • E-Mail: sales@howardmccray.com • www.howardmccray.com

40E Series - Endless Design Curved Glass - Bakery

Technical Data • Side View • Plan View



Cross Section

Plan Views