

Product Specifications Sheets

NEW SERIES



Model No.	Description	Length	Depth	Height	Voltage	Amps	HP/BTUs	Power Cord	Est. Ship Weight
SC-CDS34N-4	Self Contained	48"	35.68"**	55"	115	6.0	1/4	5-20P	500
SC-CDS34N-6	Self Contained	72"	34.00"	55"	115	8.7	1/3	5-20P	645
SC-CDS34N-8	Self Contained	96"	34.00"	55"	115	11.2	1/2	5-20P	900
SC-CDS34N-10	Self Contained	120"	34.00"	55"	115	13.8	1/2	5-20P	1230
SC-CDS34N-12	Self Contained	144"	34.00"	55"	115	17.4	3/4	5-20P	1344

• Cases are designed to operate at 75 degrees Fahrenheit and 55% relative humidity

• Specification subject to change without notice

** includes removable external door



Standard Specifications and Optional Features

CONSTRUCTION

- UL Classified to ANSI/NSF 7
- Foamed in place CFC free foam
- Thermal insulated front glass 28"H
- Heavy gauge steel super structure
- Bottom storage
- Drain is included for cleaning

INTERIOR

- White
- Stainless steel heavy gauge mezzanine shelf
- White aluminum floor (bottom storage area)
- Air insulated baffle (prevents moisture from dripping into display area)

EXTERIOR

- Double pane rear removable doors
- Newly designed rear compression door jamb
- Removable front grille allows for cleaning
- Removable rear grille for easy servicing
- GFI protected outlet mounted rear right
- Removable rear top glass doors
- Removable rear bottom glass doors 6' and 8'
- Rear exterior mounted switch
- Rear exterior mounted electronic control (thermostat)
- 1" Bumper

FINISHES

- Thermal formed doors and door tracks
- White front and ends
- Stainless steel mirror trim
- Stainless steel heavy gauge top - 23.3" W
- White exterior rear

LIGHTING

- 2 rows of LED lighting at top of unit
- 1 rows of LED lighting under shelf

ELECTRICAL REQUIREMENTS

- 115V
- 8' Power cord 5-20P
- UL/CUL listed
- 115V-12AMP general purpose receptacle (wired separately)

REFRIGERATION

- CopeVap system (eliminates need for condensate pan)
- R134a expansion valve system
- Full length gravity coil located at inside top of unit and in bottom day storage area
- Self contained unit
- Automatic defrost electronically controlled
- Remotes available

OPTIONS

- Scale stand 8'
- Paper cutter 8'
- Stainless steel, laminate, or paint
- Mirrored doors
- Extra stainless steel mezzanine shelf
- Drop work shelf
- Front bumper 3"
- Door locks
- Digital thermometer
- Coated coils

Important Note:

All refrigerated cases are designed to operate in an environment of 75 degrees and 55% relative humidity.

Product must be cooled before being displayed within the case.

DRAIN IS REQUIRED FOR CLEANING

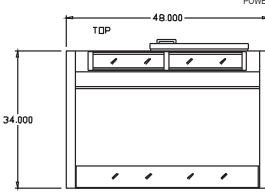
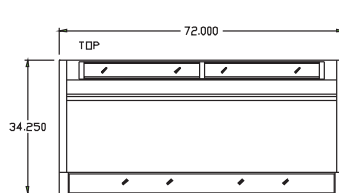
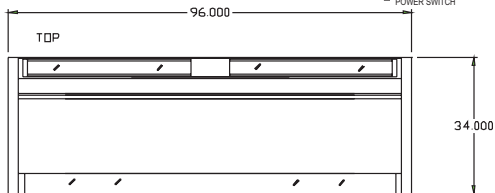
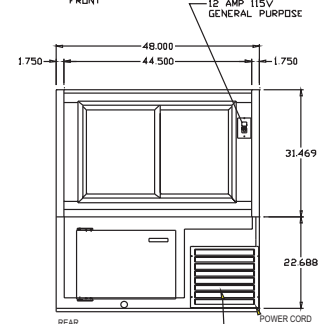
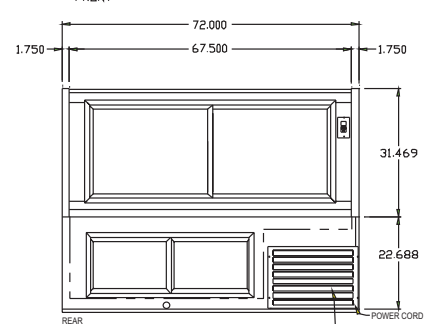
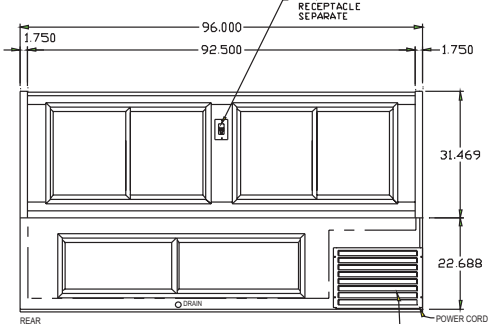
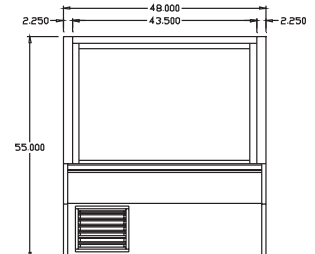
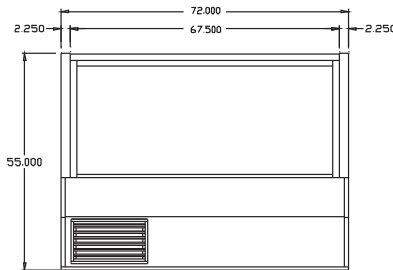
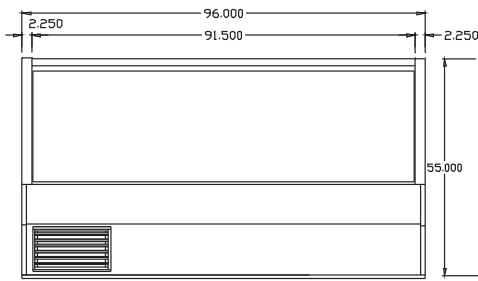
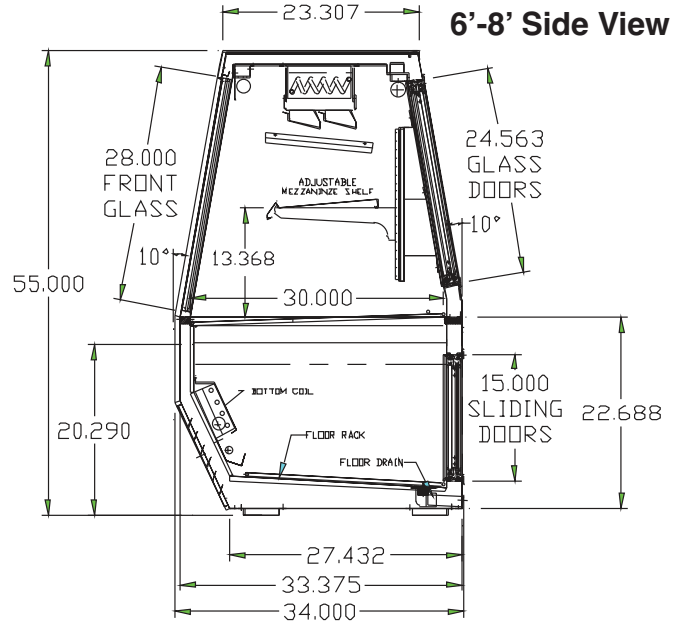
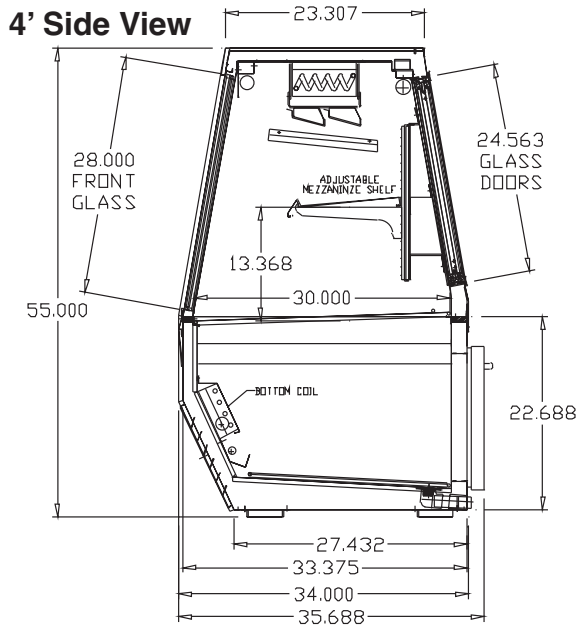


Technical Data

Model No.	SC	SC-CDS34N-4	SC-CDS34N-6	SC-CDS34N-8
Length		48"	72"	96"
Height		55"	55"	55"
Depth		34"	34"	34"
Depth with bottom door		35.688"	34"	34"
(Dimensions are +/- 1/4")				
Operating temperature		36°F to 40°F	36°F to 40°F	36°F to 40°F
Refrigerant (exp. valve)	SC	R134a	R134a	R134a
Compressor size HP	SC	1/4	1/3	1/2
Defrost per day (24 hours)		Electronic controlled 1 per day	Electronic controlled 1 per day	Electronic controlled 1 per day
BTU's at +20°F Evap. Temp.	R	1400	2100	2800
Voltage		115	115	115
Amperage unit only		6	8.7	11.2
Cord and plug		8' Cord, 5-20P plug	8' Cord, 5-20P plug	8' Cord, 5-20P plug
Exterior color		White	White	White
Interior color		White	White	White
Inside end panels		White	White	White
Floors		White	White	White
# of top doors		2	2	4
Door size		23.56" x 18.56"	23.56" x 29.3"	23.56" x 19.56"
# of bottom doors	SC	1 external	2 sliding	2 sliding
Bottom door size		14" x 18.56"	14" x 19.56"	14" x 29.3"
# of coils		2	2	2
Bottom storage		Yes	Yes	Yes
Front glass		28" x 43.5"	28" x 65.25"	28" x 91.5"
# of main deck shelves		2	3	4
Main deck size		(1)30"X18" (1) 30" x 23.875"	(1)30"X18" (2) 30" x 23.875"	(1)30"X18" (3) 30" x 23.875"
Floor Racks		(2) 23.625" x 22"	(3) 23.625" x 22"	(4) 23.625" x 22"
Cubic capacity		30	45	60
Mezzanine shelf		Standard	Standard	Standard
Shipping Info				
Height		61"	61"	61"
Depth		44"	44"	44"
Length		61"	87"	109"
Gross weight SC		500	645	900



Technical Data • Side View • Plan View



SC-CDS34N-8

SC-CDS34N-6

SC-CDS34N-4