

40E Series - Endless Design Single Duty - Deli

- PRODUCT SPECIFICATIONS SHEETS



- Cases are designed to operate at 75 degrees Fahrenheit and 55% relative humidity

**Self-Contained
Remote**

**SC-CDS40E-8
R-CDS40E-8**

**SC-CDS40E-12
R-CDS40E-12**

Length with (2) ends
Length without ends
Height with ends
Height without ends
Depth with ends
Depth without ends
Endless Design
(Dimensions are +/-1/4")

100-1/2"
96"
53"
52-1/2"
40"
39-1/2"
YES

148-1/2"
144"
53"
52-1/2"
40"
39-1/2"
YES

- Specification subject to change without notice

Standard Specifications and Optional Features

<p>CONSTRUCTION UL Classified to ANSI/NSF 7 Foamed in place CFC free foam Triple pane insulated front glass- 28"H Heavy gauge steel super structure Single duty display Endless design allows for continuous line up Drain is included for cleaning</p>	<p>FINISHES Satin finish extrusion on doors and door tracks Designer white exterior front and ends Stainless steel mirror trim Stainless steel heavy gauge top- 20" W Rear of unit is stainless steel brush finish at top Bottom rear is designer white aluminum</p>
<p>INTERIOR Designer white interior ends Stainless steel heavy gauge mezzanine shelf (1row) Epoxy coated main deck shelves Air insulated baffle (<i>prevents moisture from dripping into display area</i>)</p>	<p>REFRIGERATION Copevap system (<i>eliminates need for condensate pan</i>) R134a expansion valve system Gravity coil located at <i>inside top of unit and</i> Self contained system Automatic defrost controlled by time clock-<i>(self contained units only)</i> Pressure control maintains constant temperatures Remotes available</p>
<p>EXTERIOR Double pane rear removable doors Newly designed compression door jamb Removable front grille allows for cleaning Removable rear grille for easy servicing 2-1/4" removable end panels Front bumper 1"- gray</p>	<p>LIGHTING 2 Rows of T12 lighting at top of unit</p>
<p>ELECTRICAL REQUIREMENTS 115V/60Hz/1Ph Unit must be hard wired UL/CUL listed 115V-12AMP general purpose receptacle (<i>wired separately</i>)</p>	<p><i>Important Note: All refrigerated cases are designed to operate in an environment of 75 degrees and 55% relative humidity.</i></p> <p><i>Important Note: Product must be cooled before being displayed within the case.</i></p>

OPTIONAL FEATURES

<p>Scale stand Paper cutter Stainless steel, laminate, or paint Mirrored doors Extra stainless steel mezzanine shelf</p>	<p>Drop work shelf Door locks Digital thermometer Sandwich racks Salad pan settings Front bumpers 3"</p>
--	---



Technical Data

Model	Self contained	SC-CDS40E-8	SC-CDS40E-12
	Remote	R-CDS40E-8	R-CDS40E-12
Length with (2) ends Length without ends Height with ends Height without ends Depth with ends Depth without ends Endless design (Dimensions are +/- 1/4")		100-1/2" 96" 53" 52-1/2" 40" 39-1/2" YES	148-1/2" 144" 53" 52-1/2" 40" 39-1/2" YES
Operating temperature Refrigerant (expansion valve) Compressor size- HP Pressure control settings @ 75°F, 55%RH Defrost per day (24 hours) BTU's at +20°F Evap. Temp. Voltage Amperage Amperage- lights only Cord and plug	Self contained Self contained Air Defrost Remote Self Contained Remote	36°F to 40°F R134a 1/2 30 12 1 per day 2800 115V 11.2A 1.6A No	36°F to 40°F R134a 3/4 30 12 1 per day 4200 115V 17.4A 2.4A No
Exterior color Interior color Inside end panels Floors # of top doors Door size # of coils Bottom storage Front glass # of main deck shelves Shelf size Cubic capacity (ft ³) Mezzanine- shelf		White Stainless White White 4 20-1/2"X23-1/2" 1 No 28"X94-11/16" 4 23-1/2"X32-5/8" 49 Standard	White Stainless White White 4 31"X23-1/2" 1 No 28"X142-11/16" 6 23-1/2"X32-5/8" 74 Standard

SHIPPING INFORMATION

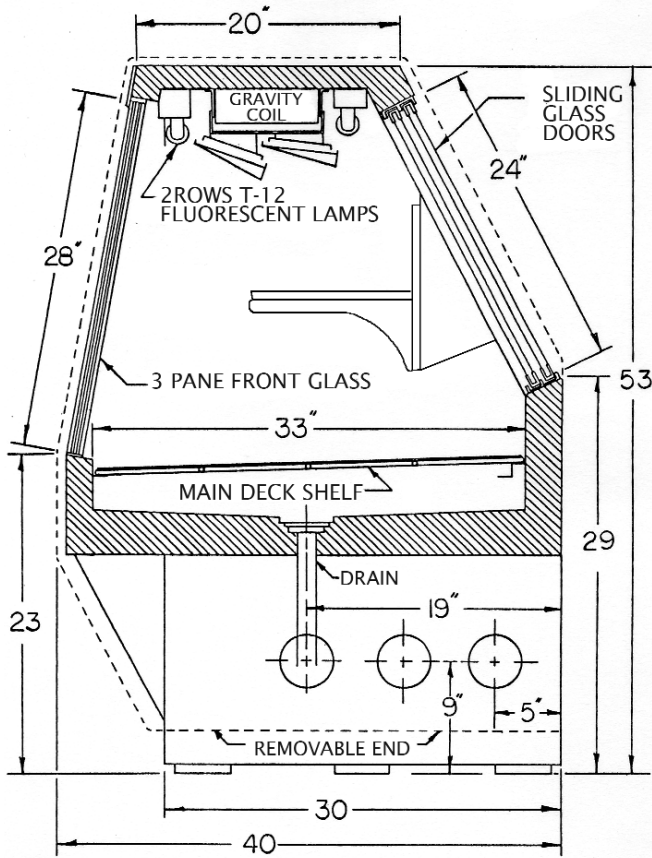
Height		58"	58"
Depth		47"	47"
Length		109"	157"
Gross weight	Self contained	983#	1396#
	Remote	890#	1325#
Cubic feet		170ft ³	245ft ³

- Cases are designed to operate at 75 degrees Fahrenheit and 55% relative humidity
- Cases are equipped with washout drains; check your local building codes for connection requirements.
- Specification subject to change without notice

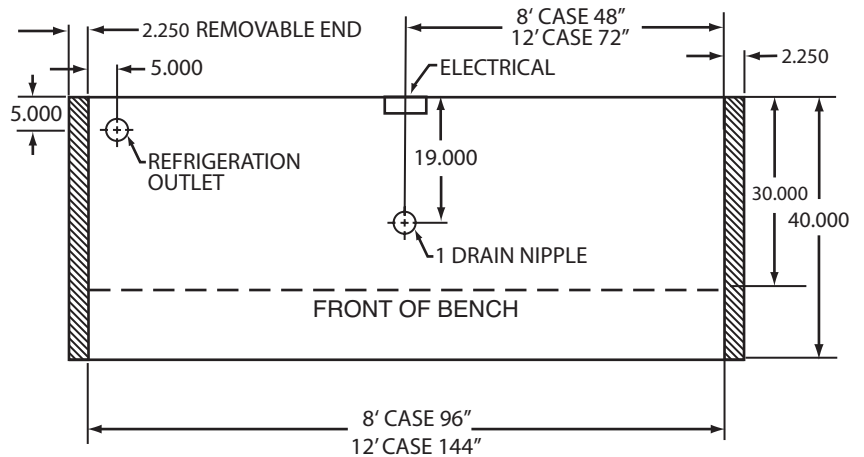
A Division of HMC Enterprises LLC • 2501 Grant Avenue • Philadelphia, PA 19114 USA

(215) 464-6800 • 1-800-344-8222 • Fax (215) 969-4890 • E-Mail: sales@howardmccray.com • www.howardmccray.com

Technical Data • Side View • Plan View



Cross Section



Plan View