

## 32E Series - Endless Design Single Duty - Fish And Poultry

• PRODUCT SPECIFICATIONS SHEETS



*Picture shown is a deli case*

- Cases are designed to operate at 75 degrees Fahrenheit and 55% relative humidity

Self-Contained Remote	SC-CFS32E-4 R-CFS32E-4	SC-CFS32E-6 R-CFS32E-6	SC-CFS32E-8 R-CFS32E-8
Length with (2) ends	50"	74"	98"
Length without ends	48"	72"	96"
Height with ends	49-5/8"	49-5/8"	49-5/8"
Height without ends	49"	49"	49"
Depth with ends	30-1/2"	30-1/2"	30-1/2"
Depth without ends	29-1/2"	29-1/2"	29-1/2"
Endless Design	YES	YES	YES

(Dimensions are +/- 1/4")

- Specification subject to change without notice

## 32E Series – Endless Design Single Duty – Fish And Poultry

### Standard Specifications and Optional Features

<p><b>CONSTRUCTION</b>          UL Classified to ANSI/NSF 7          Foamed in place CFC free foam          Triple pane insulated front glass-28"H          Heavy gauge steel super structure          Single duty display          Endless design allows for continuous line up          Drain is included for cleaning</p>	<p><b>FINISHES</b>          Satin finish extrusion on doors and door tracks          Designer white exterior front and ends          Stainless steel mirror trim          Stainless steel heavy gauge top – 20" W          Rear of unit is stainless steel brush finish at top          Bottom rear is designer white aluminum</p>
<p><b>INTERIOR</b>          Designer white ends          White aluminum floor-main deck area          Air insulated baffle (<i>prevents moisture from dripping into display area</i>)          Stainless steel individual ice pans</p>	<p><b>REFRIGERATION</b>          Copevap system (<i>eliminates need for condensate pan</i>)          R134a expansion valve system          Gravity coil located at inside top of unit          Self contained system          Automatic defrost controlled by time clock-(<i>self contained units only</i>)          Pressure control maintains constant temperatures          Remotes available</p>
<p><b>EXTERIOR</b>          Double pane rear removable doors          Newly designed rear compression door jamb          Removable front grille allows for cleaning          Removable rear grille for easy servicing          1" removable end panels</p>	<p><b>LIGHTING</b>          2 Rows of T12 lighting at top of unit</p>
<p><b>ELECTRICAL REQUIREMENTS</b>          115V/60Hz/1Ph          Unit must be hard wired          UL/CUL listed          115V-12AMP general purpose receptacle (<i>wired separately</i>)</p>	<p><b><i>Important Note: All refrigerated cases are designed to operate in an environment of 75 degrees and 55% relative humidity.</i></b></p> <p><b><i>Important Note: Product must be cooled before being displayed within the case.</i></b></p> <p><b><i>ICE REQUIRED (32 lbs per foot)</i></b></p>

### OPTIONAL FEATURES

<p>Paint, laminate or stainless steel          Mirrored doors          Stainless steel mezzanine shelf          Front bumpers 1" or 3"</p>	<p>Door locks          Digital thermometer          Pass thru front doors</p>
--------------------------------------------------------------------------------------------------------------------------------------------------------	---------------------------------------------------------------------------------------



## 32E Series – Endless Design Single Duty – Fish And Poultry

### Technical Data

Model #	Self contained	SC-CFS32E-4	SC-CFS32E-6	SC-CFS32E-8
	Remote	R-CFS32E-4	R-CFS32E-6	R-CFS32E-8
Length with (2) ends Length without ends Height with ends Height without ends Depth with ends Depth without ends Endless design (Dimensions are +/- 1/4")		50" 48" 49-5/8" 49" 30-1/2" 29-1/2" YES	74" 72" 49-5/8" 49 " 30-1/2" 29-1/2" YES	98" 96" 49-5/8" 49 " 30-1/2" 29-1/2" YES
Operating temperature Refrigerant (expansion valve) Compressor size HP Pressure control settings @ 75°F, 55%RH  Defrost per day (24 hours) BTU's at +20°F Evap. Temp. Voltage Amperage Amperage, lights only Cord and plug	Self contained Self contained  CUT IN CUT OUT Air Defrost Remote  Self contained Remote	38°F to 40°F R34a 1/4  30 15 1 per day 820 115V 6.0A 0.8A No	38°F to 40°F R134a 1/3  30 15 1 per day 1230 115V 6.4A 1.6A No	38°F to 40°F R134a 1/2  30 15 1 per day 1640 115V 9.1A 1.6A No
Exterior color Interior color Inside end panels Floors # of top doors Door size # of coils Bottom storage Front glass Cubic capacity (ft <sup>3</sup> ) Mezzanine Shelf # of ice Pans		White Stainless White White 2 20-1/2"X23-1/2" 1 No 28"X46-11/16" 23 Optional 2	White Stainless White White 2 31"X23-1/2" 1 No 28"X70-11/16" 34.5 Optional 3	White Stainless White White 4 20-1/2"X23-1/2" 1 No 28"X94-11/16" 46 Optional 4

### SHIPPING INFORMATION

Height		55"	55"	55"
Width		44"	44"	44"
Depth		61"	87"	115"
Gross weight	Self contained Remote	470# 430#	680# 630#	910# 860#
Cubic feet		85ft <sup>3</sup>	122ft <sup>3</sup>	161ft <sup>3</sup>

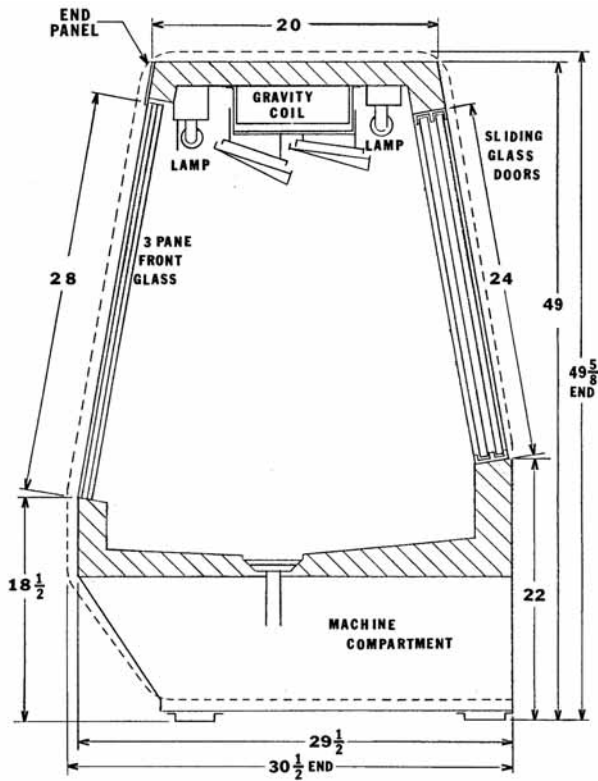
- Cases are designed to operate at 75 degrees Fahrenheit and 55% relative humidity
- Cases are equipped with drains; check your local building codes for connection requirements.
- Specification subject to change without notice

**A Division of HMC Enterprises LLC • 2501 Grant Avenue • Philadelphia, PA 19114 USA**

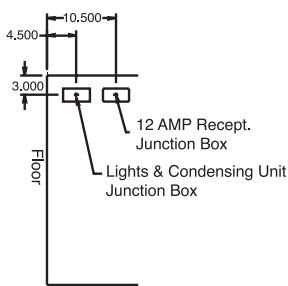
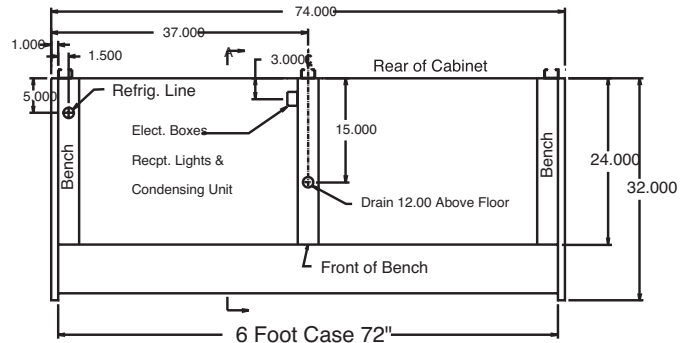
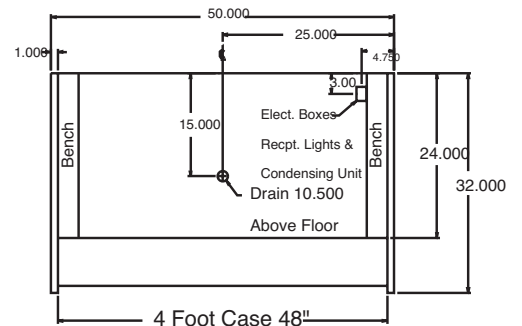
(215) 464-6800 • 1-800-344-8222 • Fax (215) 969-4890 • E-Mail: sales@howardmccray.com • www.howardmccray.com

## 32E Series – Endless Design Single Duty – Fish And Poultry

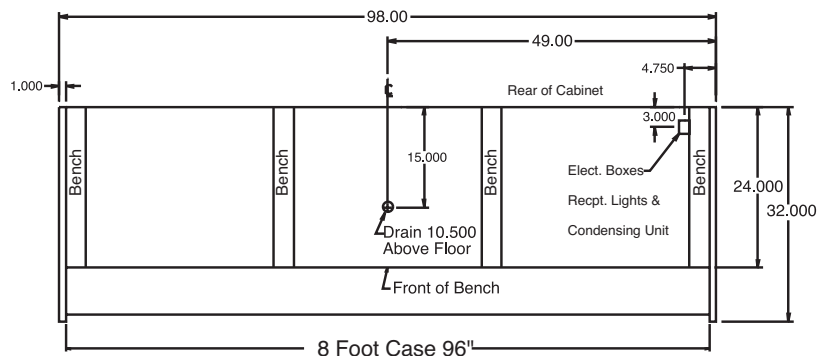
### Technical Data • Side View • Plan View



Cross Section



Side View



Plan Views