

40E Series - Endless Design Single Duty - Fish and Poultry

• PRODUCT SPECIFICATIONS SHEETS



- Cases are designed to operate at 75 degrees Fahrenheit and 55% relative humidity

Self-Contained Remote	SC-CFS40E-8 R-CFS40E-8	SC-CFS40E-12 R-CFS40E-12
Length with (2) ends	100-1/2"	148-1/2"
Length without ends	96"	144"
Height with ends	53"	53"
Height without ends	52-1/2"	52-1/2"
Depth with ends	40"	40"
Depth without ends	39-1/2"	39-1/2"
Endless Design	YES	YES
(Dimensions are +/-1/4")		

- Specification subject to change without notice

40E Series - Endless Design Single Duty - Fish and Poultry

Standard Specifications and Optional Features

<p>CONSTRUCTION UL Classified to ANSI/NSF 7 Foamed in place CFC free foam Triple pane insulated front glass- 28"H Heavy gauge steel super structure Single duty display Endless design allows for continuous line up Drain is included for cleaning</p>	<p>FINISHES Satin finish extrusion on doors and door tracks Designer white exterior front and ends Stainless steel mirror trim Stainless steel heavy gauge top- 20" W Rear of unit is stainless steel brush finish at top Bottom rear is designer white aluminum</p>
<p>INTERIOR Designer white interior ends Air insulated baffle (<i>prevents moisture from dripping into display area</i>) Stainless steel individual ice pans</p>	<p>REFRIGERATION Copevap system (<i>eliminates need for condensate pan</i>) R134a expansion valve system Gravity coil located at <i>inside top of unit and</i> Self contained system Automatic defrost controlled by time clock-<i>(self contained units only)</i> Pressure control maintains constant temperatures Remotes available</p>
<p>EXTERIOR Double pane rear removable doors Newly designed compression door jamb Removable front grille allows for cleaning Removable rear grille for easy servicing 2-1/4" removable end panels Front bumper 1"- gray</p>	<p>LIGHTING 2 Rows of T12 lighting at top of unit</p>
<p>ELECTRICAL REQUIREMENTS 115V/60Hz/1Ph Unit must be hard wired UL/CUL listed 115V-12AMP general purpose receptacle (<i>wired separately</i>)</p>	<p><i>Important Note: All refrigerated cases are designed to operate in an environment of 75 degrees and 55% relative humidity.</i></p> <p><i>Important Note: Product must be cooled before being displayed within the case.</i></p> <p><i>ICE REQUIRED (32 lbs per foot)</i></p>

OPTIONAL FEATURES

<p>Scale stand Paper cutter Stainless steel, laminate, or paint Mirrored doors Extra stainless steel mezzanine shelf</p>	<p>Drop work shelf Door locks Digital thermometer Front bumpers 3"</p>
--	---



40E Series - Endless Design Single Duty - Fish and Poultry

Technical Data

Model	Self contained	SC-CFS40E-8	SC-CFS40E-12
	Remote	R-CFS40E-8	R-CFS40E-12
Length with (2) ends Length without ends Height with ends Height without ends Depth with ends Depth without ends Endless design (Dimensions are +/- 1/4")		100-1/2" 96" 53" 52-1/2" 40" 39-1/2" YES	148-1/2" 144" 53" 52-1/2" 40" 39-1/2" YES
Operating temperature Refrigerant (expansion valve) Compressor size- HP Pressure control settings @ 75°F, 55%RH	Self contained Self contained	38°F to 40°F R134a 1/3	38°F to 40°F R134a 1/2
Defrost per day (24 hours) BTU's at +20°F Evap. Temp. Voltage Amperage Amperage- lights only Cord and plug	Air Defrost Remote Self Contained Remote	CUT IN CUT OUT 30 15 1 per day 1640 115V 9.1A 1.6A No	30 15 1 per day 2460 115V 13.8A 2.4A No
Exterior color Interior color Inside end panels Floors # of top doors Door size # of coils Bottom storage Front glass # of ice pans Cubic capacity (ft ³) Mezzanine- shelf		White Stainless White White 4 20-1/2"X23-1/2" 1 No 28"X94-11/16" 4 49 Optional	White Stainless White White 4 31"X23-1/2" 1 No 28"X142-11/16" 5 74 Optional

SHIPPING INFORMATION

Height		58"	58"
Depth		47"	47"
Length		109"	157"
Gross weight	Self contained Remote	983# 890#	1396# 1325#
Cubic feet		170ft ³	245ft ³

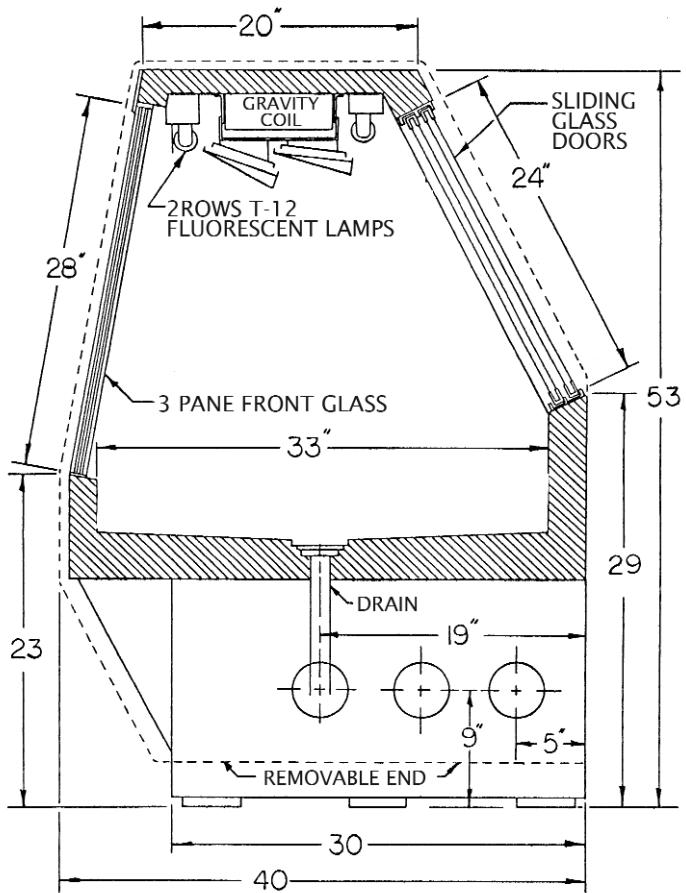
- Cases are designed to operate at 75 degrees Fahrenheit and 55% relative humidity
- Cases are equipped with washout drains; check your local building codes for connection requirements.
- Specification subject to change without notice

A Division of HMC Enterprises LLC • 2501 Grant Avenue • Philadelphia, PA 19114 USA

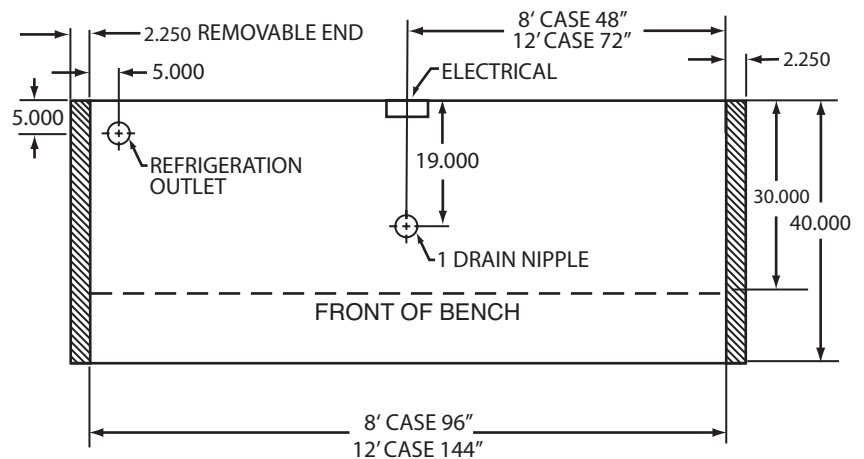
(215) 464-6800 • 1-800-344-8222 • Fax (215) 969-4890 • E-Mail: sales@howardmccray.com • www.howardmccray.com

40E Series - Endless Design Single Duty - Fish and Poultry

Technical Data • Side View • Plan View



Cross Section



Plan View