

32E Series - Endless Design Single Duty - Red Meat

• PRODUCT SPECIFICATIONS SHEETS



• Cases are designed to operate at 75 degrees Fahrenheit and 55% relative humidity

Self-Contained Remote	SC-CMS32E-4 R-CMS32E-4	SC-CMS32E-6 R-CMS32E-6	SC-CMS32E-8 R-CMS32E-8
Length with (2) ends	50"	74"	98"
Length without ends	48"	72"	96"
Height with ends	49-5/8"	49-5/8"	49-5/8"
Height without ends	49"	49"	49"
Depth with ends	30-1/2"	30-1/2"	30-1/2"
Depth without ends	29-1/2"	29-1/2"	29-1/2"
Endless Design	YES	YES	YES

(Dimensions are +/- 1/4")

• Specification subject to change without notice

32E Series – Endless Design Single Duty – Red Meat

Standard Specifications and Optional Features

<p>CONSTRUCTION UL Classified to ANSI/NSF 7 Foamed in place CFC free foam Triple pane insulated front glass-28"H Heavy gauge steel super structure Single duty display Endless design allows for continuous line up Drain is included for cleaning</p>	<p>FINISHES Satin finish extrusion on doors and door tracks Designer white exterior front and ends Stainless steel mirror trim Stainless steel heavy gauge top – 20" W Rear of unit is stainless steel brush finish at top Bottom rear is designer white aluminum</p>
<p>INTERIOR Designer white ends White aluminum floor-main deck area Epoxy coated main deck shelves Air insulated baffle (<i>prevents moisture from dripping into display area</i>)</p>	<p>REFRIGERATION Copevap system (<i>eliminates need for condensate pan</i>) R134a expansion valve system Gravity coil located at inside top of unit Humidity coil located at main deck (<i>provides extra humidity</i>) Self contained system Automatic defrost controlled by time clock-(<i>self contained units only</i>) Pressure control maintains constant temperatures Remotes available</p>
<p>EXTERIOR Double pane rear removable doors Newly designed rear compression door jamb Removable front grille allows for cleaning Removable rear grille for easy servicing 1" removable end panels</p>	<p>LIGHTING 2 Row of T12 lighting at top of unit</p>
<p>ELECTRICAL REQUIREMENTS 115V/60Hz/1Ph Unit must be hard wired UL/CUL listed 115V-12AMP general purpose receptacle (<i>wired separately</i>)</p>	<p><i>Important Note: All refrigerated cases are designed to operate in an environment of 75 degrees and 55% relative humidity.</i></p> <p><i>Important Note: Product must be cooled before being displayed within the case.</i></p>

OPTIONAL FEATURES

<p>Stainless steel, laminate, or paint Mirrored doors Stainless steel mezzanine shelf Front bumper 1" or 3"</p>	<p>Door locks Pass thru front doors Meat platters Red meat bulbs</p>
--	---



32E Series – Endless Design Single Duty – Red Meat

Technical Data

Model #	Self contained	SC-CMS32E-4	SC-CMS32E-6	SC-CMS32E-8
	Remote	R-CMS32E-4	R-CMS32E-6	R-CMS32E-8
Length with (2) ends		50"	74"	98"
Length without ends		48"	72"	96"
Height with ends		49-5/8"	49-5/8"	49-5/8"
Height without ends		49"	49"	49"
Depth with ends		30-1/2"	30-1/2"	30-1/2"
Depth without ends		29"	29"	29"
Endless design (Dimensions are +/- 1/4")		YES	YES	YES
Operating temperature		34°F to 36°F	34°F to 36°F	34°F to 36°F
Refrigerant (expansion valve)	Self contained	R134a	R134a	R134a
Compressor size HP	Self contained	1/4	1/3	1/2
Pressure control settings @ 75°F, 55%RH		CUT IN 30 CUT OUT 12	30 12	30 12
Defrost per day (24 hours)	Air Defrost	1 per day	1 per day	1 per day
BTU's at +20°F Evap. Temp.	Remote	1400	2100	2800
Voltage		115V	115V	115V
Amperage	Self contained	6.0A	9.1A	11.2A
Amperage, lights only	Remote	0.8A	1.6A	1.6A
Cord and plug		No	No	No
Exterior color		White	White	White
Interior color		Stainless	Stainless	Stainless
Inside end panels		White	White	White
Floors		White	White	White
# of top doors		2	2	4
Door size		20-1/2"X23-1/2"	31"X23-1/2"	20-1/2"X23-1/2"
# of coils		2	2	2
Bottom storage		No	No	No
Front glass		28"X46-11/16"	28"X70-11/16"	28"X94-11/16"
# of main deck shelves		2	3	4
Main deck size		23-5/8"X25"	23-5/8"X25"	23-5/8"X25"
Cubic capacity (ft ³)		23	34.5	46
Mezzanine Shelf		Optional	Optional	Optional

SHIPPING INFORMATION

Height		55"	55"	55"
Depth		44"	44"	44"
Length		61"	87"	115"
Gross weight	Self contained	470#	680#	910#
	Remote	430#	630#	860#
Cubic feet		85ft ³	122ft ³	161ft ³

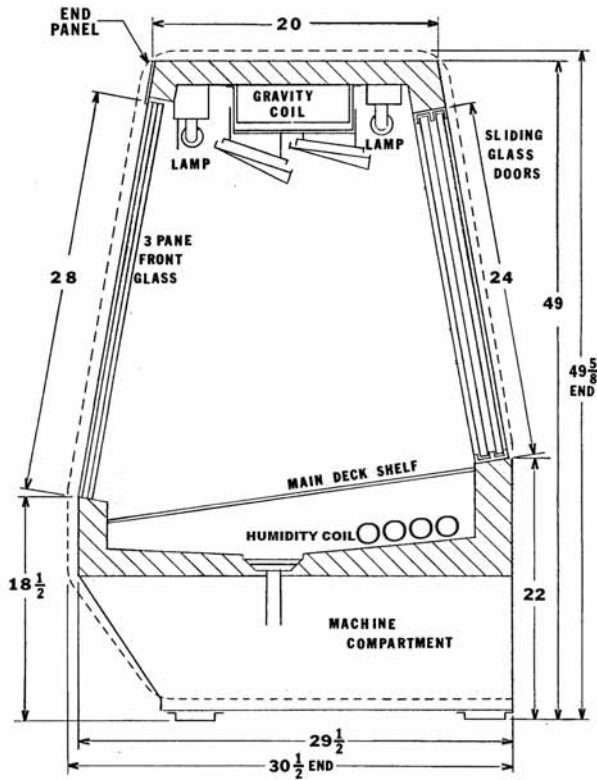
- Cases are designed to operate at 75 degrees Fahrenheit and 55% relative humidity
- Cases are equipped with drains; check your local building codes for connection requirements.
- Specification subject to change without notice

A Division of HMC Enterprises LLC • 2501 Grant Avenue • Philadelphia, PA 19114 USA

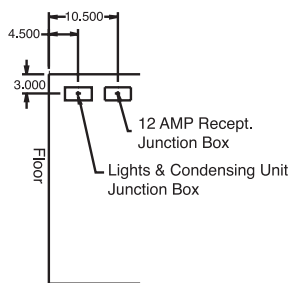
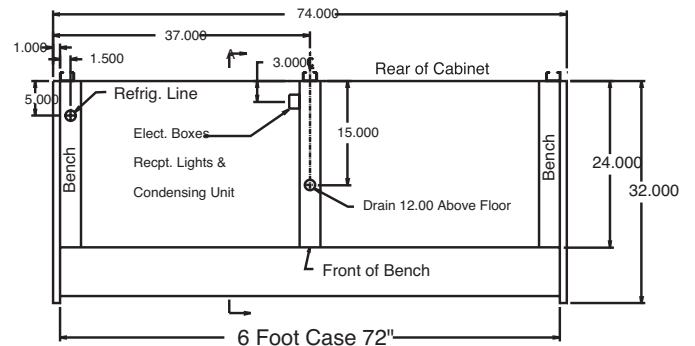
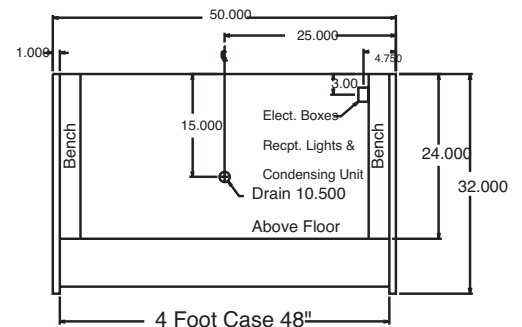
(215) 464-6800 • 1-800-344-8222 • Fax (215) 969-4890 • E-Mail: sales@howardmccray.com • www.howardmccray.com

32E Series – Endless Design Single Duty – Red Meat

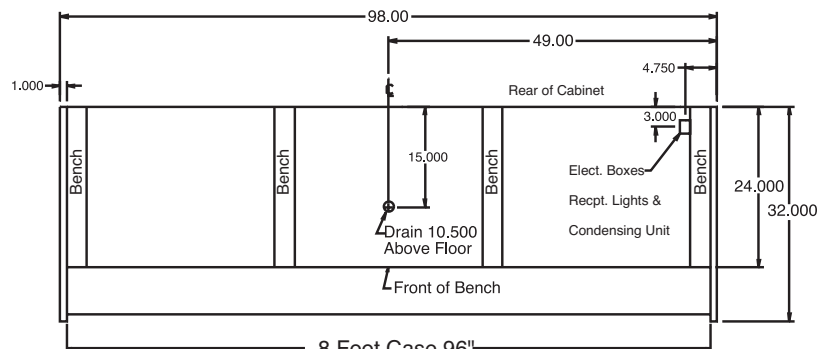
Technical Data • Side View • Plan View



Cross Section



Side View



Plan Views