

### 40E Series - Endless Design Single Duty - Red Meat

- PRODUCT SPECIFICATIONS SHEETS



- Cases are designed to operate at 75 degrees Fahrenheit and 55% relative humidity

Self-Contained Remote	SC-CMS40E-4 R-CMS40E-4	SC-CMS40E-6 R-CMS40E-6	SC-CMS40E-8 R-CMS40E-8	SC-CMS40E-10 R-CMS40E-10	SC-CMS40E-12 R-CMS40E-12
Length with (2) ends	52-1/2"	76-1/2"	100-1/2"	124-1/2"	148-1/2"
Length without ends	48"	72"	96"	120"	144"
Height with ends	53"	53"	53"	53"	53"
Height without ends	52-1/2"	52-1/2"	52-1/2"	52-1/2"	52-1/2"
Depth with ends	39"	39"	39"	39"	39"
Depth without ends	39-1/2"	39-1/2"	39-1/2"	39-1/2"	39-1/2"
Endless Design	YES	YES	YES	YES	YES

(Dimensions are +/-1/4")

- Specification subject to change without notice

### 40E Series - Endless Design Single Duty - Red Meat

## Standard Specifications and Optional Features

<p><b>CONSTRUCTION</b> UL Classified to ANSI/NSF 7 Foamed in place CFC free foam Triple pane insulated front glass- 28"H Heavy gauge steel super structure Single duty display Endless design allows for continuous line up Drain is included for cleaning</p>	<p><b>FINISHES</b> Satin finish extrusion on doors and door tracks Designer white or black exterior front and ends Stainless steel mirror trim Stainless steel heavy gauge top- 20" W Rear of unit is stainless steel brush finish at top Bottom rear is designer white aluminum</p>
<p><b>INTERIOR</b> Designer white interior ends Air insulated baffle (<i>prevents moisture from dripping into display area</i>) Epoxy coated main deck shelves</p>	<p><b>REFRIGERATION</b> Copevap system (<i>eliminates need for condensate pan</i>) R134a expansion valve system Gravity coil located at <i>inside top of unit</i> Self contained system Automatic defrost controlled by time clock-(<i>self contained units only</i>) Pressure control maintains constant temperatures Humidity coil located at main deck Remotes available</p>
<p><b>EXTERIOR</b> Double pane rear removable doors Newly designed compression door jamb Removable front grille allows for cleaning Removable rear grille for easy servicing 2-1/4" removable end panels Front bumper 1"- gray</p>	<p><b>LIGHTING</b> 2 Rows of T12 lighting at top of unit</p>
<p><b>ELECTRICAL REQUIREMENTS</b> 115V/60Hz/1Ph Unit must be hard wired UL/CUL listed 115V-12AMP general purpose receptacle (<i>wired separately</i>)</p>	<p><b>Important Note:</b> <i>All refrigerated cases are designed to operate in an environment of 75 degrees and 55% relative humidity.</i></p> <p><b>Important Note:</b> <i>Product must be cooled before being displayed within the case.</i></p>

### OPTIONAL FEATURES

<p>Scale Stand Paper cutter Stainless steel, laminate or paint Mirrored doors Stainless steel mezzanine shelf Red meat bulbs</p>	<p>Drop work shelf Front bumpers 3" Door locks Digital thermometer Meat platters</p>
--	--



## 40E Series - Endless Design Single Duty - Red Meat

### Technical Data

Model	Self contained	SC-CMS40E-4	SC-CMS40E-6	SC-CMS40E-8	SC-CMS40E-10	SC-CMS40E-12
	Remote	R-CMS40E-4	R-CMS40E-6	R-CMS40E-8	R-CMS40E-10	R-CMS40E-12
Length with (2) ends		52.5"	76.5"	100.5"	124.5"	148.5"
Length without ends		48"	72"	96"	120"	144"
Height with ends		53"	53"	53"	53"	53"
Height without ends		52.5 "	52.5 "	52.5"	52.5 "	52.5 "
Depth with ends		40"	40"	40"	40"	40"
Depth without ends		39.5"	39.5 "	39.5 "	39.5 "	39.5 "
Endless design (Dimensions are +/- 1/4")		YES	YES	YES	YES	YES
Operating temperature		34°F to 36°F	34°F to 36°F	34°F to 36°F	34°F to 36°F	34°F to 36°F
Refrigerant (expansion valve)	Self contained	R134a	R134a	R134a	R134a	R134a
Compressor size HP	Self contained	1/4	1/3	1/2	1/2	3/4
Pressure control settings @ 75°F, 55%RH	CUT IN	30	30	30	30	30
	CUT OUT	12	12	12	12	12
Defrost per day (24 hours)	Air Defrost	1 per day	1 per day	1 per day	1 per day	1 per day
BTU's at +20°F Evap. Temp.	Remote	1400	2100	2800	3500	4200
Voltage		115V	115V	115V	115v	115V
Amperage	Self contained	6.0A	8.7A	11.2A	13.8A	17.4A
Amperage, lights only	Remote	0.8A	1.3A	1.6A	2.4A	2.4A
Cord and plug		No	No	No	No	No
Exterior color		White	White	White	White	White
Interior color		Stainless	Stainless	Stainless	Stainless	Stainless
Inside end panels		White	White	White	White	White
Floors		White	White	White	White	White
Drain required	Self contained					
# of top doors		2	2	4	4	4
Door size		20.5" x 23.5"	31" X 23.5"	20.5" x 23.5"	25.75"X23.5"	31" X 23.5"
# of coils		2	2	2	2	2
Bottom storage		No	No	No	No	No
Front glass		28"X46-11/16"	28"X70-11/16"	28"X94-11/16"	28"X118-11/16"	28"X142-11/16"
# of main deck shelves		2	3	4	5	6
Main deck size		23.5"x32.62"	23.5"x32.62	23.5"x32.62	23.5"x32.62	23.5"x32.62
Cubic capacity (ft <sup>3</sup> )				49		74
Mezzanine Shelf		optional	optional	optional	optional	optional

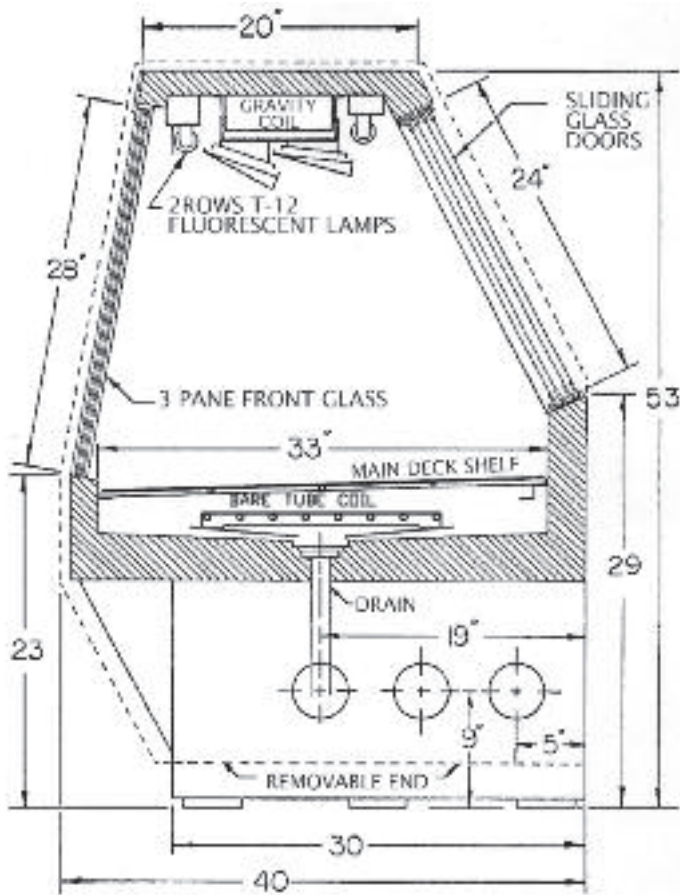
### SHIPPING INFORMATION

Height		58"	58"	58"	58"	58"
Depth		44"	44"	44"	44"	44"
Length		61"	87"	109"	135"	157"
Gross weight	Self contained	530#	741#	897#	1150#	1414#
	Remote	497#	693#	832#	1089#	1359#
Cubic feet		89ft <sup>3</sup>	128ft <sup>3</sup>	164ft <sup>3</sup>	199ft <sup>3</sup>	231ft <sup>3</sup>

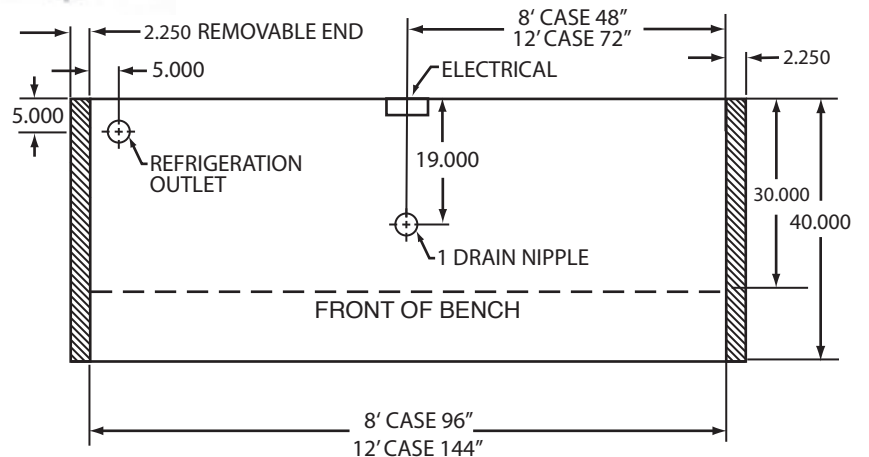
- Cases are designed to operate at 75 degrees Fahrenheit and 55% relative humidity
- Cases are equipped with washout drains; check your local building codes for connection requirements.
- Specification subject to change without notice

**40E Series - Endless Design**  
**Single Duty - Red Meat**

**Technical Data • Side View • Plan View**



Cross Section



Plan View