

NOR-LAKE, INCORPORATED  
727 Second Street  
P.O. Box 248  
Hudson, Wisconsin 54016

800-955-5253  
715-386-2323  
866-961-5253 Parts  
800-388-5253 Service  
715-386-6149 FAX  
www.norlake.com



# NOR-LAKE SHELVING SYSTEMS

## STRONG, VERSATILE, ASSEMBLES IN MINUTES

### STANDARD FEATURES

#### SHELVING KITS

Shelving kits specifically designed for each walk-in configuration are offered as an optional extra. These kits are shipped with the walk-in so that all necessary components are at your location promptly when you need them. The shelving sets are coded to correspond to the walk-in configuration ordered and are offered in either three or four tier.

#### Two Types of Shelving Systems Are Available From Nor-Lake.

**A. Green Kote™ Shelving** - Green epoxy coated shelves. 15 year guarantee against corrosion.

**B. Nor-Lake Standard Chrome Kote™ Shelving.**

Shelving system construction is identical. Select the shelving FINISH of your choice.

Shelving posts are engineered for maximum strength. Shelves are adjustable on 1" centers. All shelves are NSF. listed. Special clips are utilized to gain the maximum square footage of storage space for each model. 14", 18" and 24" wide shelves are used as required for maximum storage capacity in each set. This wire shelving is ideal for storage of all refrigerated or frozen products, as well as non-refrigerated storage.



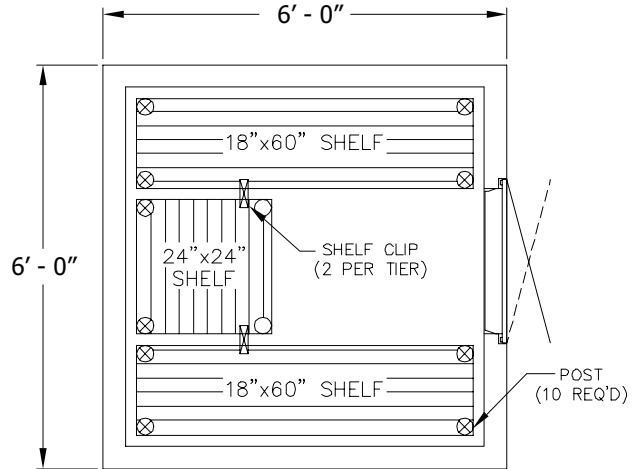
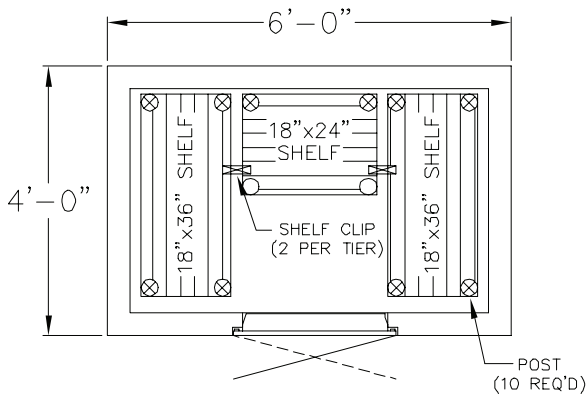
NOR-LAKE SHELVING SYSTEMS

\*Most options are available two weeks from receipt of order.  
Please contact us for specific questions.



Nor-Lake, Inc.  
Registered to ISO 9001:2008  
File No. 10001816

# Typical Shelving System Layouts for Use in Nor-Lake Walk-ins



## SPECIFICATIONS

### SHELVES:

Shelves to have #9 (.148") gauge crosswires spaced 3/4" on centers with crossbraces 1/4" (.192") minimum of 4-3/4" on center.

### SHELF FRAMES

Channel to be 9/16" x 1" x .075" thick.

### SHELF COLLARS

A round tapered 1-5/16" high steel collar to be welded at each corner.

### FINISHES

**A. Green Kote™:** Electrostatically applied green baked epoxy over zinc steel and brite basic wire. Thickness: 4-7 mill.

**B. Chrome Kote™:** Plated quality wire and steel. Surface nickel chrome plated.

### POSTS

Posts to be .062" thick 1" O.D. round tubing notched every 1" on each corner of the post.

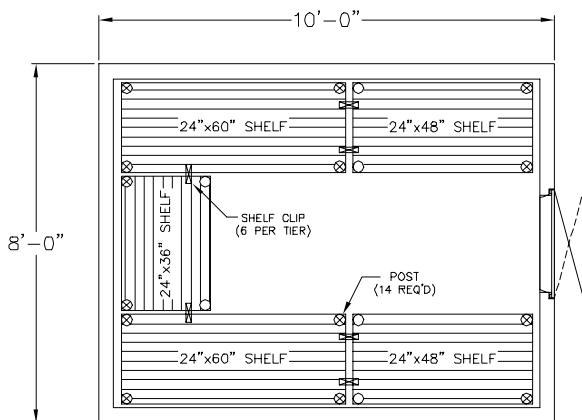
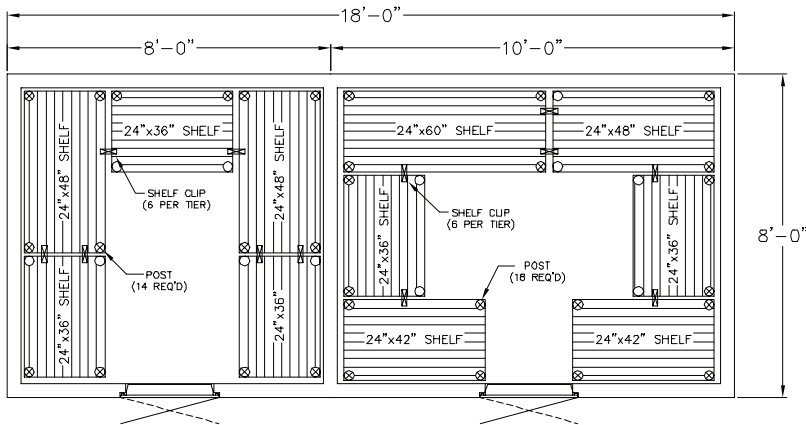
### POST LEVELER

Installed on the bottom of each post is nylon housing for a steel leveler 3/8"-16 x 1-3/4".

### FINISHES

**A. Green Kote™:** Electrostatically applied green baked epoxy over green zinc steel and brite basic wire. Thickness: 2-3 mill.

**B. Chrome Kote™:** Plated quality wire and steel. Surface nickel chrome plated.



**ISO 9001:2008**  
Registered to ISO 9001:2008  
File No. 10001816

**NORLAKE**<sup>®</sup>

**Standex**  
Food Service Equipment Group

Revision Date: 12/11  
© 2011 NOR-LAKE, INC.  
Printed in the U.S.A.  
Part Number: 121229