



Founded in 1946

Project: _____

Items: _____

Quantity: _____

Approval: _____

Date: _____

STAINLESS STEEL MOBILE HAND SINK

Stainless Steel Mobile Hand Sink

This unit is an efficient solution for areas with restricted/limited availability of plumbing facility, while ensuring appropriate levels of hygiene.

Features:

- Unit is constructed of 300 series stainless steel
- Faucet, which blends hot and cold water
- 6" boxed back splash with stainless steel paper towel holder
- 5" x 1-1/4" swivel polyurethane casters with brakes
- 10" x 14" x 6" deep tub with 3-1/2" basket drain and 13 oz. soap dispenser
- UL listed Stiebel Eltron Mini water heater at 120V/15A
- UL listed Shurflo water pump at 115V
- 5 gallon clean water storage and 6 gallon waste water storage
- GFI outlet with 8' power cord
- 110° F water supplied at 0.32 GPM
- Lifetime warranty against corrosion

Benefits:

- Maintains hygienic and safe environment
- Versatile as it can be used in a setting with limited plumbing facility



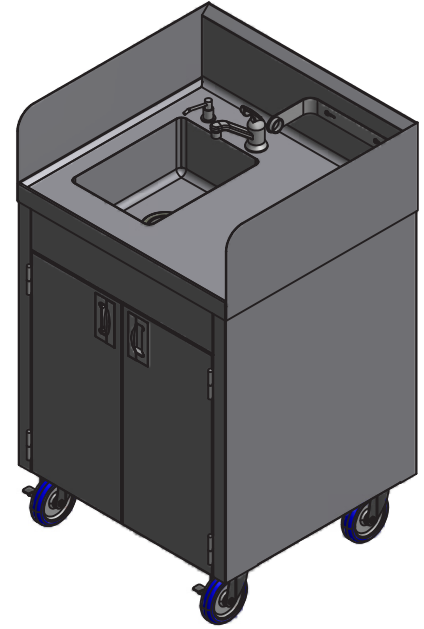
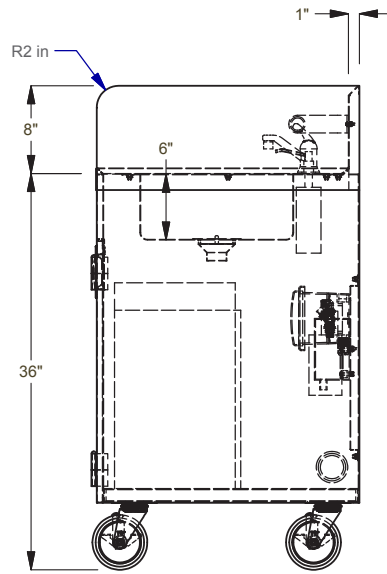
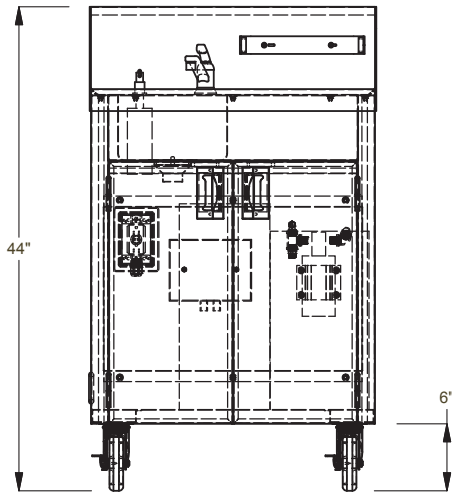
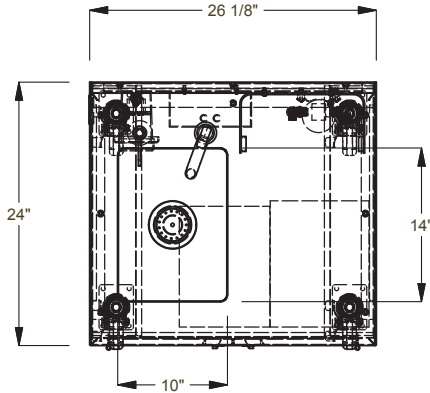
STCT-BHD2436PUMP





Founded in 1946

Stainless Steel Mobile Hand Sink



Model Number	Order#	Overall Dimensions						Approx. Ship Wt	
		Width		Length		Height		(lb)	(kg)
		(in)	(mm)	(in)	(mm)	(in)	(mm)		
STCT-BHD2436PUMP	992759	26-1/8	664	24	607	44	1118	153	69

Caster Information

Swivel Plate Caster with 5" Polyurethane Wheel & Brake 738AW/LC

5" Polyurethane Wheel 7112

Freight Class: 150



In line with our policy to continually improve our products, Winholt reserves the right to change materials and specifications without notice.