

PROJECT:	_____
LOCATION:	_____
ITEM#:	_____
QUANTITY:	_____

**COMPETITOR SERIES®**

**C-BB48**

**C-BB60**

**C-BB72**

# SOLID DOOR BACK BAR REFRIGERATORS

- Beautiful ergonomic construction
- Black corrosion resistant steel exterior, stainless steel interior and stainless steel top
- Electro-Mechanical thermostat with temperature read-out  
(Mid Year 2015: Digital temperature controller & read-out)
- Forced air refrigeration system
- Side mount compressor
- Recessed door handles
- LED interior lighting
- Door locks
- (4) leveling feet included
- Accessory: optional casters upon request
- Migali® Protection Plan: 1 Year Parts & Labor Warranty, 5 Years Compressor Warranty

MODEL	DOORS	Cu/Ft	SHELVES	H/P	AMPS	VOLTAGE	WEIGHT(lbs)	PLUG TYPE	DIMENSIONS L x D x H	TEMPERATURE RANGE
C-BB48	2	11.8	4	1/3	6.4	115/60/1	315 lbs.	Nema 5-15P	48.75" x 24.4" x 35.75"	+33° F (-) +38° F
C-BB60	2	15.8	4	1/3	6.4	115/60/1	381 lbs.	Nema 5-15P	60.8" x 24.4" x 35.75"	+33° F (-) +38° F
C-BB72	3	19.6	6	1/3	7.4	115/60/1	410 lbs.	Nema 5-15P	72.8" x 24.4" x 35.75"	+33° F (-) +38° F

\* MIGALI® RESERVES THE RIGHT TO CHANGE SPECIFICATIONS WITHOUT NOTICE



**TOLL FREE: 800.852.5292**  
**WEB: www.migali.com**



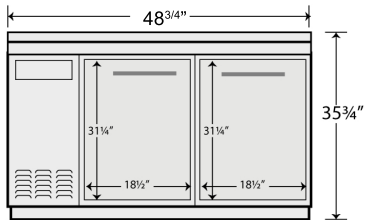
Conforms to NSF 7 Foodservice



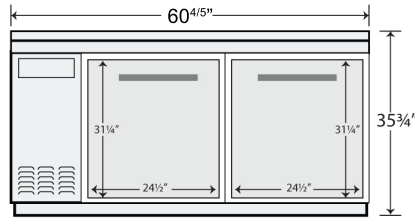
**MIGALI® REMAINS AN AMERICAN FAMILY COMPANY SINCE 1955**

# DIMENSIONAL DRAWINGS

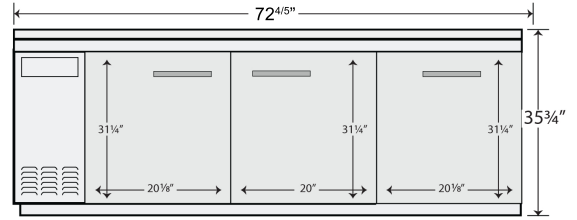
**C-BB48**



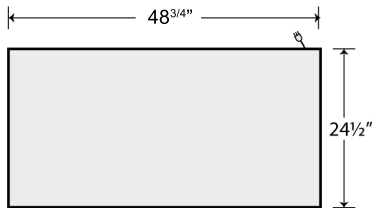
**C-BB60**



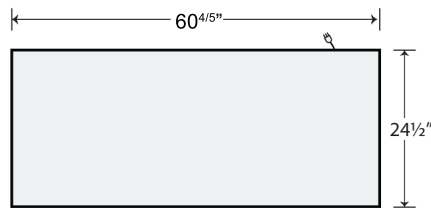
**C-BB72**



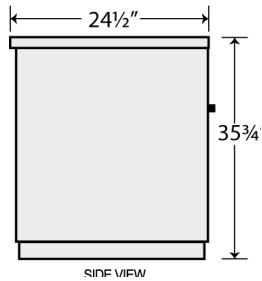
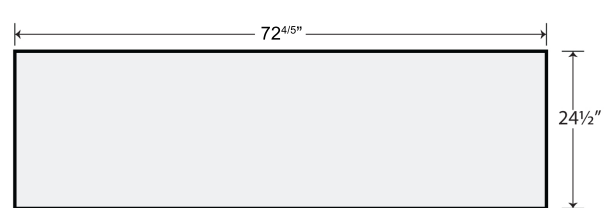
**C-BB48 TOP VIEW**



**C-BB60 TOP VIEW**



**C-BB72 TOP VIEW**



**SIDE VIEW (1,2,3 DOORS)**

**TOLL FREE:** 800.852.5292  
**FAX:** 856.963.3604  
**EMAIL:** contact@migali.com  
**WEB:** www.migali.com



MIGALI® REMAINS AN AMERICAN FAMILY COMPANY SINCE 1955