

- **BD3632** 36-1/4"L x 32-1/4"D x 82-5/8"H
- **BD4732** 47-1/4"L x 32-1/4"D x 82-5/8"H

### Included

- Breeze~E (Type-II) self-contained refrigeration
- Clear glass swinging doors (self-closing)
- Condensate pan
- Hydrocarbon refrigerant (R290)
- LED shelf lights
- One piece formed ABS plastic tub
- One year parts & labor; 5 year compressor warranty
- Shelving removable and adjustable on 1" centers
- Warmest average product temperature of 40°F or less



**BD3632**

Specify	Standard Features	Additional Options
<b>EXTERIOR COLOR</b>	• Powder coated Silversan Black	• Stainless steel
<b>INTERIOR COLOR</b>	• Powder coated Silversan Black	• Stainless steel
<b>BASE SUPPORT</b>	• Casters w/ levelers	• Seismic levelers
<b>END PANELS</b>	• Full w/stainless steel mirror interior	
<b>FRONT DOORS</b>	<sup>1</sup> • Clear glass swinging doors (self-closing)	
<b>VINYL GRAPHICS</b>	• None	• Full wrap graphic set • Logo graphic only
<b>PRICE TAG MOLDING</b>	• 1" Price tag molding (matches interior color)	
<b>SHELVING</b>	• Metal shelves (4), lighted (LED)	
<b>LIGHTS</b>	• LED 4000K w/ frosted lens	
<b>ELECTRICAL CONNECTION</b>	• 6' Straight blade power cord (base exit)	• Electrical leads (remote)
<b>REFRIGERATION</b>	• Breeze~E (Type-II) self-contained refrigeration	<sup>1</sup> • Remote w/thermostat, solenoid & TXV
<b>MISCELLANEOUS</b>		• Second year parts & labor warranty (excludes compressor)

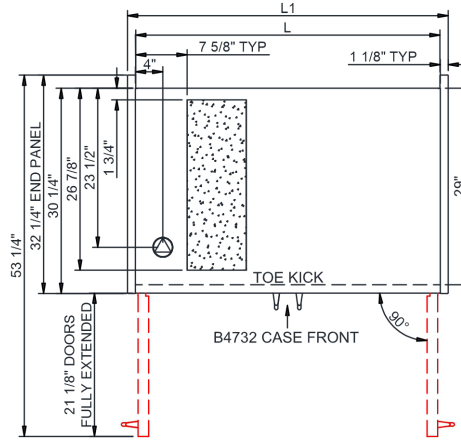
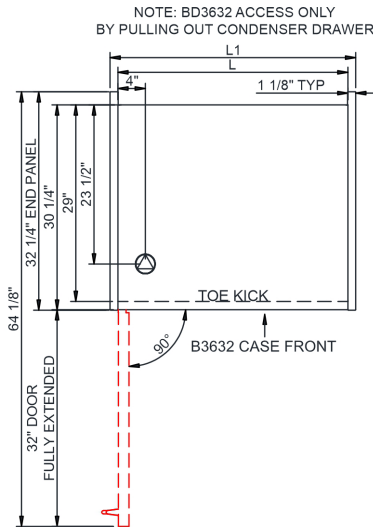
**Std Notes:** 1 - Doors per unit - BD3632 = 1, BD4732 = 2

**Option Notes:** 1 - Read important notes for remote options

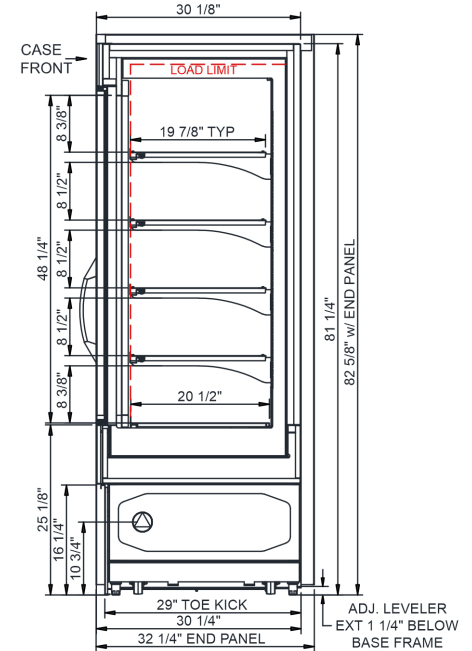
**Intended Environment:** Type II - Designed to operate in ambient conditions of 80°F and 55% relative humidity unless noted otherwise in system information below.

Zone	Intended Product To Be Displayed	Warmest Avg Prod Temp ° F
1	Packaged refrigerated products	40

PLAN VIEW



SIDE VIEW



NOTE: COMPRESSOR AIR FRONT INTAKE AND UPPER REAR DISCHARGE. LOWER FRONT PANEL CANNOT BE BLOCKED.

NOTE: ALL DIMENSIONS APPROXIMATE

- ELECTRICAL JUNCTION BOX (SUPPLIED WITH 6" LEADS OR POWER CORD).
- LOCATION OF DRAIN TUBE FOR REMOTE REF. ONLY (SUPPLIED WITH 3/4" OR 1 1/2" PVC TUBE).

- REFRIGERATION LINE CONNECTION.
- REMOTE FLOOR SINK & UTILITIES ACCESS AREA.

- SELF-CONTAINED CASE SERVICE ACCESS AREA.
- DRY CASE SERVICE ACCESS AREA.

Model Technical Specifications															
Model	L"	L1"	L2"	System Circuit Volts				Phs	Freq	Amps ***	Watts	Wires	NEMA Plug	SST	Conv. Rack BTU/H
BD3632	34.00	36.25	3.13	Remote (DX)	Circuit #1	110-120	1	60	1.09	50	2+G	Leads Multiple	28.00	730	676
				Self-Contained (R290)	Circuit #1	110-120	1	60	10.51	428	2+G	5-15P or L5-15P	N/A	N/A	N/A
BD4732	45.00	47.25	3.13	Remote (DX)	Circuit #1	110-120	1	60	1.09	59	2+G	Leads Multiple	28.00	821	760
				Self-Contained (R290)	Circuit #1	110-120	1	60	11.07	470	2+G	5-15P or L5-15P	N/A	N/A	N/A

\*\*\* Does not include electric defrost on freezer models.

#### Regulatory Approvals:

All Models  
 Accordance with AHRI Std 1200  
 ETL Listed to UL 471  
 ETL Listed to CAN/CSA 22.2 No. 120  
 ENERGY STAR®  
 ETL Sanitation to NSF/ANSI 7



In Accordance with  
**AHRI Std 1200**

**DOE 2017**  
 Energy Efficiency  
 Compliant



#### Important Notes:

- 1) REMOTE REFRIGERATION NOTE: Condensing unit not included, floor drain required.
- 2) ELECTRICAL NOTE: If GFCI is required, a GFCI breaker MUST be used in lieu of a GFCI receptacle
- 3) Performance issues (product temperatures, water on floor, etc.) caused by adverse conditions are not covered by warranty.
- 4) Keep unit at least 15' from exterior doors, overhead HVAC vents, or any air curtain disruption.
- 5) End panels must be tightly joined or kept at least 6" away from any structure to prevent condensation.
- 6) Do not expose unit to direct sunlight or any heat source (ovens, fryers, etc.).
- 7) Tile floors, low ceilings, or small rooms will increase noise level.

**⚠ WARNING:** This product can expose you to chemicals, including Urethane (Ethyl Carbamate), which are known to the State of California to cause cancer and birth defects or other reproductive harm. For more information go to [www.P65Warnings.ca.gov](http://www.P65Warnings.ca.gov).