

Fusion

GMG 52"H Refrigerated Service Case

Structural Concepts®

DELIVERING FRESH. ALWAYS.™

- **GMG4** 51"L x 43"D x 51-5/8"H
- **GMG5** 62-7/8"L x 43"D x 51-5/8"H
- **GMG6** 75-3/8"L x 43"D x 51-5/8"H
- **GMG8** 99-3/4"L x 43"D x 51-5/8"H
- **GMG10** 123-3/8"L x 43"D x 51-5/8"H
- **GMG12** 148-1/2"L x 43"D x 51-5/8"H

Included

- Remote DX refrigeration
- Gravity coil
- LED top light
- Lift-up front glass
- One year parts & labor warranty
- Stainless steel rear exterior
- Warmest average product temperature of 40°F or less



GMG8

Specify	Standard Features	Additional Options
EXTERIOR COLOR	<ul style="list-style-type: none"> Laminate (stock colors) 	<ul style="list-style-type: none"> Laminate (non-stock colors) Powder coated (stock/non-stock colors) Powder coated Silversan Black Stainless steel
INTERIOR COLOR	<ul style="list-style-type: none"> Stainless steel interior 	
LOWER FRONT PANEL COLOR	<ul style="list-style-type: none"> Powder coated Silversan Black 	<ul style="list-style-type: none"> Powder coated (stock/non-stock colors) Stainless steel
BASE SUPPORT	<ul style="list-style-type: none"> Rail system for shims (remote) 	
BUMPER FRONT	<ul style="list-style-type: none"> 1" Boston bumper (specify color) 	<ul style="list-style-type: none"> 1" Stainless steel plate rail bumper
DISPLAY	<ul style="list-style-type: none"> Wire rack deck 	<ul style="list-style-type: none"> Ice pans, requires floor drain
END PANELS	<ul style="list-style-type: none"> Full w/stainless steel mirror interior 	<ul style="list-style-type: none"> Cutaway w/glass None (specify per line-up)
FRONT GLASS	<ul style="list-style-type: none"> Curved 	<ul style="list-style-type: none"> Flat angled
SCALE STAND	<ul style="list-style-type: none"> None 	¹ • Scale stand w/ receptacle & CAT5 (specify location) ² • Scale stand w/ receptacle (specify location)
REAR DOORS	<ul style="list-style-type: none"> Clear glass rear sliding doors 	<ul style="list-style-type: none"> Reflective glass rear sliding doors
LIGHTS	<ul style="list-style-type: none"> LED 4000K w/ frosted lens 	
ELECTRICAL CONNECTION	<ul style="list-style-type: none"> Electrical leads (remote) 	
REFRIGERATION	¹ • Remote DX refrigeration	³ • Remote w/thermostat, solenoid & TXV
SENSOR	<ul style="list-style-type: none"> None 	<ul style="list-style-type: none"> CPC discharge air sensor (remote)
MISCELLANEOUS		<ul style="list-style-type: none"> Front glass lock Rear door lock
ACCESSORIES		<ul style="list-style-type: none"> Drain strainer Rear wrapping board, white Sanalite®

Std Notes: 1 - Read important notes for remote options

Option Notes: 1 - Separate circuit required
 2 - Separate circuit required
 3 - Read important notes for remote options

Fusion

GMG 52"H Refrigerated Service Case

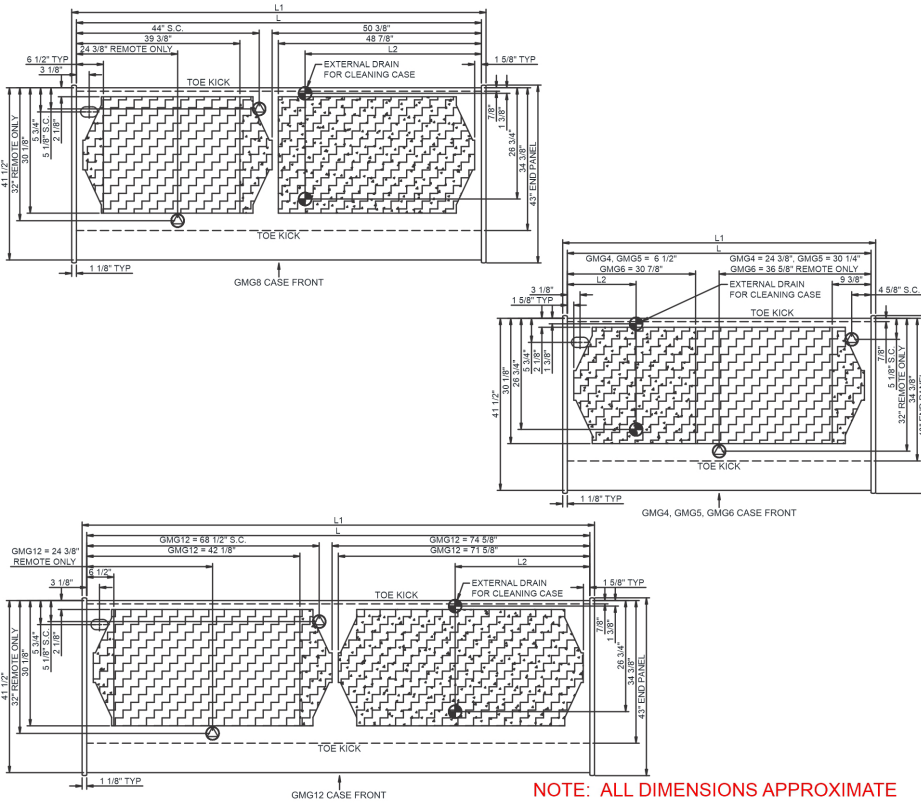
Structural Concepts®

DELIVERING FRESH. ALWAYS.™

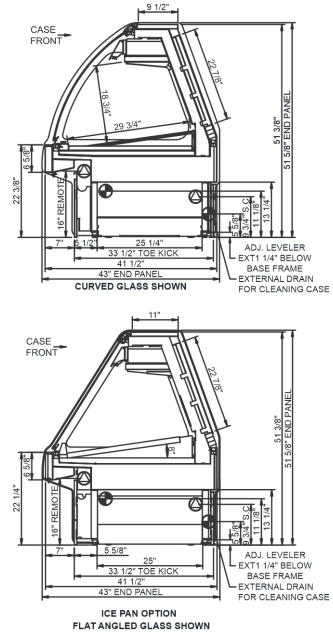
Intended Environment: Type I - Designed to operate in ambient conditions of 75°F with 55% relative humidity unless noted otherwise in system information below.

Zone	Intended Product To Be Displayed	Warmest Avg Prod Temp ° F
1	Unpackaged refrigerated products	38

PLAN VIEW



SIDE VIEW



NOTE: ALL DIMENSIONS APPROXIMATE

- ELECTRICAL JUNCTION BOX (SUPPLIED WITH 6" LEADS OR POWER CORD).
- REMOTE OF DRAIN TUBE FOR REMOTE REF. ONLY (SUPPLIED WITH 3/4" OR 1 1/2" PVC TUBE).

- REFRIGERATION LINE CONNECTION.
- REMOTE FLOOR SINK & UTILITIES ACCESS AREA.

- SELF-CONTAINED CASE SERVICE ACCESS AREA.
- DRY CASE SERVICE ACCESS AREA.

Model Technical Specifications

Model	L"	L1"	L2"	System Circuit Volts			Phs	Freq	Amps ***	Watts	Wires	NEMA Plug	SST	Conv. Rack RTU/H	Para. Rack RTU/H	Est Wt
GMG4	48.75	51.00	13.38	Remote (DX)	Circuit #1	110-120	1	60	1.23	124	2+G	Leads Multiple	18.00	1382	1280	1,100
GMG5	60.63	62.88	13.38	Remote (DX)	Circuit #1	110-120	1	60	1.46	160	2+G	Leads Multiple	18.00	1728	1600	1,150
GMG6	73.13	75.38	16.38	Remote (DX)	Circuit #1	110-120	1	60	1.46	160	2+G	Leads Multiple	18.00	2039	1888	1,200
GMG8	97.50	99.75	42.50	Remote (DX)	Circuit #1	110-120	1	60	1.69	188	2+G	Leads Multiple	18.00	2722	2520	1,450
GMG10	121.13	123.38	.00	Remote (DX)	Circuit #1	110-120	1	60	2.80	91	2+G	Leads Multiple	18.00	3404	3152	1,525
GMG12	146.25	148.50	.00	Remote Blower (DX)	Circuit #1	110-120	1	60	5.10	155	2+G	Leads Multiple	20.00	4104	3800	1,600

*** Does not include electric defrost on freezer models.

Regulatory Approvals:

All Models
 Accordance with AHRI Std 1200
 ETL Listed to UL 471
 ETL Listed to CAN/CSA 22.2 No. 120
 ETL Sanitation to NSF/ANSI 7



In Accordance with
AHRI Std 1200

DOE 2017
 Energy Efficiency
 Compliant

Important Notes:

- 1) REMOTE REFRIGERATION NOTE: Condensing unit not included, floor drain required.
- 2) ELECTRICAL NOTE: If GFCI is required, a GFCI breaker MUST be used in lieu of a GFCI receptacle.
- 3) 45" minimum door entry clearance required (without shipping skid).
- 4) Units must be shimmed during installation to ensure the unit is level and plumb"

⚠ WARNING: This product can expose you to chemicals, including Urethane (Ethyl Carbamate), which are known to the State of California to cause cancer and birth defects or other reproductive harm. For more information go to www.P65Warnings.ca.gov.