

# Fusion

GMSS 52"H Refrigerated Self-Service Case

**Structural Concepts®**

DELIVERING FRESH. ALWAYS.™

- **GMSS452R** 51"L x 43"D x 51-5/8"H
- **GMSS552R** 62-7/8"L x 43"D x 51-5/8"H
- **GMSS652R** 75-3/8"L x 43"D x 51-5/8"H
- **GMSS852R** 99-3/4"L x 43"D x 51-5/8"H
- **GMSS1052R** 123-3/8"L x 43"D x 51-5/8"H
- **GMSS1252R** 148-1/2"L x 43"D x 51-5/8"H

## Included

- Remote DX refrigeration
- LED top & shelf lights
- One year parts & labor warranty
- Stainless steel rear exterior
- Warmest average product temperature of 40°F or less



**GMSS452R**

Specify	Standard Features	Additional Options
<b>EXTERIOR COLOR</b>	<ul style="list-style-type: none"> <li>Laminate (stock colors)</li> </ul>	<ul style="list-style-type: none"> <li>Laminate (non-stock colors)</li> <li>Powder coated (stock/non-stock colors)</li> <li>Powder coated Silversan Black</li> <li>Stainless steel</li> </ul>
<b>INTERIOR COLOR</b>	<ul style="list-style-type: none"> <li>Powder coated Silversan Black</li> </ul>	<ul style="list-style-type: none"> <li>Stainless steel</li> </ul>
<b>LOWER FRONT PANEL COLOR</b>	<ul style="list-style-type: none"> <li>Powder coated Silversan Black</li> </ul>	<ul style="list-style-type: none"> <li>Powder coated (stock/non-stock colors)</li> <li>Stainless steel</li> </ul>
<b>BASE SUPPORT</b>	<ul style="list-style-type: none"> <li>Rail system for shims</li> </ul>	
<b>BUMPER FRONT</b>	<ul style="list-style-type: none"> <li>1" Boston bumper (specify color)</li> </ul>	<ul style="list-style-type: none"> <li>1" Stainless steel plate rail bumper</li> </ul>
<b>END PANEL PROFILE</b>	<ul style="list-style-type: none"> <li>Curved</li> </ul>	<ul style="list-style-type: none"> <li>Flat angled</li> </ul>
<b>END PANELS</b>	<ul style="list-style-type: none"> <li>Full w/stainless steel mirror interior</li> </ul>	<ul style="list-style-type: none"> <li>Cutaway w/glass</li> <li>None (specify per line-up)</li> </ul>
<b>PRICE TAG MOLDING</b>	<ul style="list-style-type: none"> <li>None</li> </ul>	<ul style="list-style-type: none"> <li>1" Price tag molding (black or silver)</li> <li>Universal price tag molding (clear w/ open top)</li> </ul>
<b>REAR DOORS</b>	<ul style="list-style-type: none"> <li>None (solid back panel)</li> </ul>	<ul style="list-style-type: none"> <li>Solid rear swinging door(s) w/lock</li> </ul>
<b>SHELVING</b>	<ul style="list-style-type: none"> <li>16" &amp; 20" Solid shelving</li> </ul>	<ul style="list-style-type: none"> <li>16" &amp; 20" Glass shelving</li> </ul>
<b>LIGHTS</b>	<ul style="list-style-type: none"> <li>LED 3500K w/ frosted lens</li> </ul>	<ul style="list-style-type: none"> <li>LED 4000K w/ frosted lens</li> </ul>
<b>ELECTRICAL CONNECTION</b>	<ul style="list-style-type: none"> <li>Electrical leads (remote)</li> </ul>	
<b>REFRIGERATION</b>	<ul style="list-style-type: none"> <li><sup>1</sup> Remote DX refrigeration</li> </ul>	<ul style="list-style-type: none"> <li><sup>1</sup> Remote w/thermostat, solenoid &amp; TXV</li> </ul>
<b>SENSOR</b>	<ul style="list-style-type: none"> <li>None</li> </ul>	<ul style="list-style-type: none"> <li>CPC discharge air sensor (remote)</li> </ul>
<b>ACCESSORIES</b>		<ul style="list-style-type: none"> <li>Drain strainer</li> <li>Night curtain, retractable, non-locking</li> <li>Removable wire security cover, locking</li> </ul>

**Std Notes:** 1 - Read important notes for remote options

**Option Notes:** 1 - Read important notes for remote options

# Fusion

GMSS 52"H Refrigerated Self-Service Case

Structural Concepts®

DELIVERING FRESH. ALWAYS.™

**Intended Environment:** Type I - Designed to operate in ambient conditions of 75°F with 55% relative humidity unless noted otherwise in system information below.

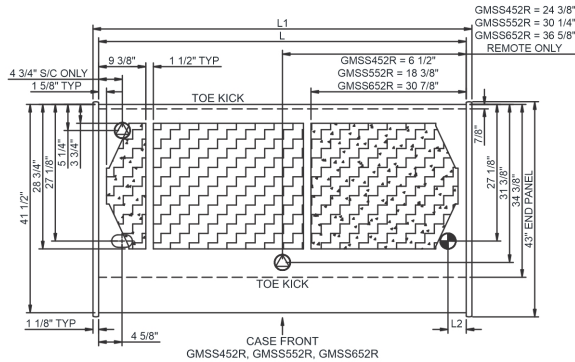
**Zone** **Intended Product To Be Displayed**

**Warmest Avg Prod Temp ° F**

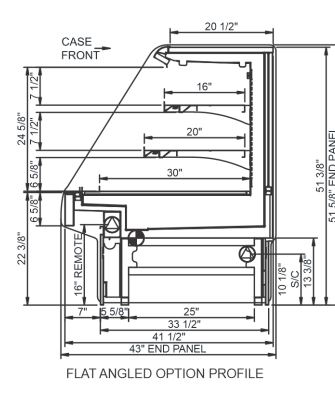
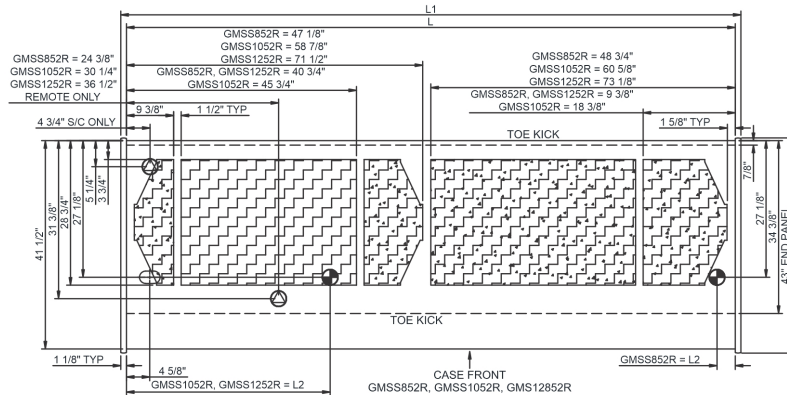
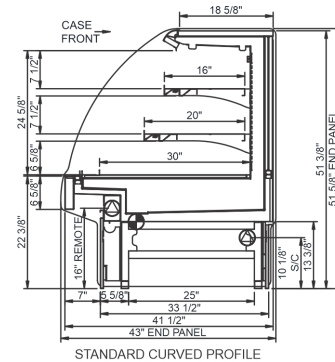
1 Packaged refrigerated products

40

## PLAN VIEW



## SIDE VIEW



NOTE: ALL DIMENSIONS APPROXIMATE

ELECTRICAL JUNCTION BOX (SUPPLIED WITH 6" LEADS OR POWER CORD).  
 LOCATION OF DRAIN TUBE FOR REMOTE REF. ONLY (SUPPLIED WITH 3/4" OR 1 1/2" PVC TUBE).

REFRIGERATION LINE CONNECTION.  
 REMOTE FLOOR SINK & UTILITIES ACCESS AREA.

SELF-CONTAINED CASE SERVICE ACCESS AREA.  
 DRY CASE SERVICE ACCESS AREA.

## Model Technical Specifications

Model	L"	L1"	L2"	System Circuit Volts			Phs	Freq	Amps ***	Watts	Wires	NEMA Plug	SST	Conv. Rack BTU/H	Para. Rack BTU/H	Est Wt
GMSS452R	48.75	51.00	3.63	Remote (DX)	Circuit #1	110-120	1	60	1.40	154	2+G	Leads Multiple	20.00	3802	3520	925
				Remote (GLYCOL 35%)	Circuit #1	110-120	1	60	1.50	88	2+G	Leads Multiple	20.00	4510	4176	
GMSS552R	60.63	62.88	3.63	Remote (DX)	Circuit #1	110-120	1	60	1.54	65	2+G	Leads Multiple	20.00	4320	4000	1,050
				Remote (GLYCOL 35%)	Circuit #1	110-120	1	60	1.54	65	2+G	Leads Multiple	20.00	4320	4000	
GMSS652R	73.13	75.38	3.63	Remote (DX)	Circuit #1	110-120	1	60	2.66	243	2+G	Leads Multiple	20.00	5270	4880	1,100
				Remote (GLYCOL 35%)	Circuit #1	110-120	1	60	2.66	243	2+G	Leads Multiple	20.00	5270	4880	
GMSS852R	97.50	99.75	3.63	Remote (DX)	Circuit #1	110-120	1	60	3.03	274	2+G	Leads Multiple	20.00	6847	6340	1,500
				Remote (GLYCOL 35%)	Circuit #1	110-120	1	60	2.95	264	2+G	Leads Multiple	20.00	6847	6340	
GMSS1052R	121.13	123.38	40.50	Remote (DX)	Circuit #1	110-120	1	60	3.04	157	2+G	Leads Multiple	20.00	8791	8140	1,500
				Remote (GLYCOL 35%)	Circuit #1	110-120	1	60	3.04	157	2+G	Leads Multiple	20.00	8791	8140	
GMSS1252R	146.25	148.50	45.13	Remote (DX)	Circuit #1	110-120	1	60	3.69	430	2+G	Leads Multiple	20.00	11016	10200	1,700

\*\*\* Does not include electric defrost on freezer models.

## Regulatory Approvals:

All Models  
 Accordance with AHRI Std 1200  
 ETL Listed to UL 471  
 ETL Listed to CAN/CSA 22.2 No. 120  
 ETL Sanitation to NSF/ANSI 7



In Accordance with  
**AHRI Std 1200**

**DOE 2017**  
 Energy Efficiency  
 Compliant

## Important Notes:

- 1) REMOTE REFRIGERATION NOTE: Condensing unit not included, floor drain required.
- 2) ELECTRICAL NOTE: If GFCI is required, a GFCI breaker MUST be used in lieu of a GFCI receptacle.
- 3) 45" minimum door entry clearance required (without shipping skid).
- 4) Units must be shimmed during installation to ensure the unit is level and plumb.

**⚠ WARNING:** This product can expose you to chemicals, including Urethane (Ethyl Carbamate), which are known to the State of California to cause cancer and birth defects or other reproductive harm. For more information go to [www.P65Warnings.ca.gov](http://www.P65Warnings.ca.gov).