



T&S BRASS AND BRONZE WORKS, INC.
 2 SADDLEBACK COVE / P.O. BOX 1088 / TRAVELERS REST, SC 29690
 PHONE 800-476-4103 - FAX 864- 834-3518



REG.#A2601
 ISO #9001

Sales No.

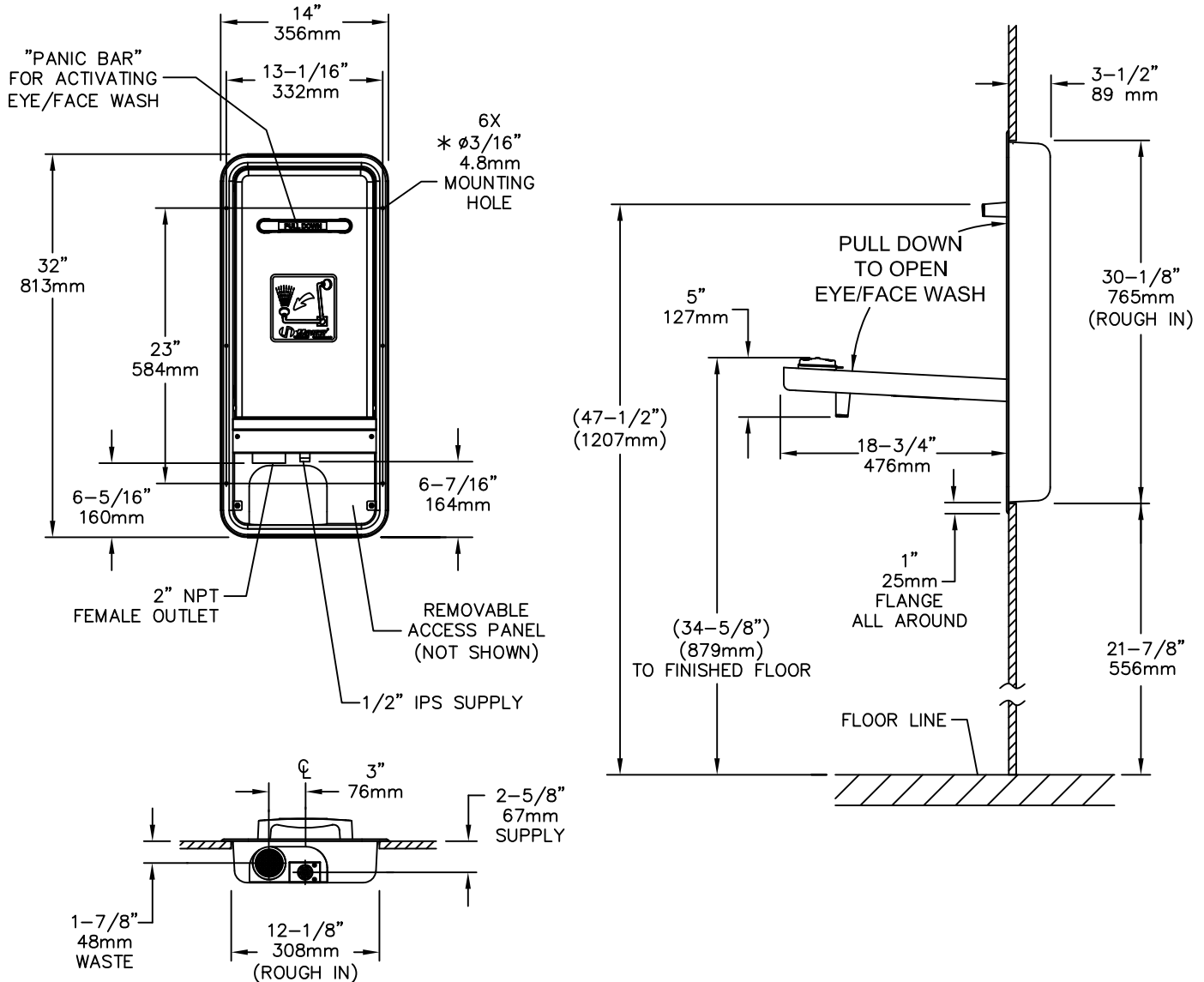
EW-7656WC

**RELIABILITY
 BUILT IN**

Job Name:

Architect/Engineer Approval:

Notes:



NOTES:

1. WHEN INSTALLING THIS UNIT, LOCAL, STATE OR FEDERAL CODES SHOULD BE ADHERED TO. WASTE CONNECTION MUST ADHERE TO LOCAL HEALTH AND PLUMBING CODES.
2. FLOW RATE FOR EYE/FACE WASH IS 5 GPM AND EXCEEDS ANSI STANDARD Z358.1.
3. DIMENSIONS MAY VARY BY $\pm 1/2"$ [12.7mm].
4. ANSI STANDARD Z358.1 APPROVED.
5. MOUNTING HARDWARE SUPPLIED BY OTHERS.

Product Description:
 EYE/FACE WASH, RECESS WALL MOUNTED

Drawn:	Checked:	Scale:
DMH	GEF	1:14
Approved:	Date:	
JHB	12/20/10	